



# HAZELDEAN

LITCHFIELD

EST 1865



## **Hazeldean Autumn Bull Sale**

**89 Performance Bulls Thursday 2nd May 2024**

Hazeldean, Cooma NSW

*Open Day Friday 26th April*

**2024**



# HAZELDEAN AUTUMN BULL SALE 2024

## 250 PTIC HEIFERS For Sale

Offered on  
Auctionsplus Friday  
3rd May

**JOIN US FOR OUR  
OPEN DAY ON FRIDAY  
THE 26TH APRIL**

***INSPECTION FROM 10AM - 2PM***

- Free delivery in VIC and NSW
- Super sound with superb temperaments
- Excellent carcass and fertility

We will have a catch up dinner the evening before the sale at 6.30pm at the Alpine Hotel Cooma. Please let us know if you can join us, contact Jenni 0428 314 838



**HAZELDEAN**  
LITCHFIELD  
EST 1865



**AuctionsPlus**

**PHOTOS AND  
VIDEOS AVAILABLE  
ON AUCTIONSPLUS**

Contact Ed 0412298546 or  
Bea 0427933103

# Hazeldean Autumn Bull Sale

**\* OPEN DAY TUESDAY 26th APRIL \***

# 89 Performance Bulls

**SALE DAY THURSDAY 2ND MAY  
ON PROPERTY HAZELDEAN COOMA NSW  
Commencing at 1pm**



Account: Hazeldean Pty Ltd  
ACN 000 012 760  
ABN 33 000 012 760

Inspection from 10.00am on sale day

## Enquiries:

Ed Bradley: 0412 298 546  
Bea Litchfield: 0427 933 103  
Jim Litchfield: 0417 676 561  
info@hazeldean.com.au

## Selling Agents:

### Nutrien Stud Stock

Tim Woodham 0436 015 115  
Matt Champion 0437 290 435  
Damo Roach 0427 253 250  
Gary Evans 0400 356 484

### Phone Bidding

Tim Woodham 0436 015 115



## Bull Deliveries

Hazeldean offers free delivery to all parts of NSW and VIC. Outside these states we will get your bull to the nearest major centre.

## Catering

Lunch will be available prior to sale courtesy Cooma Pony Club. Please stay on for refreshments after the sale.

## Agent Rebate

A 2% rebate is offered to outside agents attending the sale to introduce and assist buyers.

To qualify, agents must:

- Introduce the client by email 12 hours prior to the sale;
- attend the sale with the client



**Sale will be interfaced with AuctionsPlus.**

**Videos & photos on-line 10 days prior to sale plus final weights at:  
[www.hazeldean.com.au](http://www.hazeldean.com.au) & [www.auctionsplus.com.au](http://www.auctionsplus.com.au)**

**Register on-line prior to the sale @ [www.hazeldean.com.au](http://www.hazeldean.com.au)  
and we will have your bid card ready for you on the day**

## Sale Day Safety

**Visitors enter the pens at their own risk. Children under 16 years are not permitted to enter the pens unless supervised at all times.**

All care is taken to ensure livestock pose minimum threat to us and our clients. However, we cannot predict nor guarantee their behaviour. All sale bulls have been assessed for temperament and are quiet to handle under normal circumstances. Sale day places bulls under stresses that are foreign to their normal routine. They are not used to having a crowd of people around them and so the behaviour of even the quietest bull under normal circumstances can be unpredictable. Bulls may also fight in the pens and at these times they are oblivious to people who may be in their way. Do not put pressure on the bulls in the yards and do not enter the yards unless you need to. If you would like assistance with inspections, please ask any Hazeldean staff member or agent assisting with the sale.

**Be sure of a catalogue – Bring this one with you**

**Disclaimer** All reasonable care has been taken to ensure the information in this catalogue is correct at time of publication. The vendor makes no other representations about the accuracy, reliability or completeness of the information provided and does not assume any responsibility for the use or interpretation of the information.



## Welcome to Hazeldean

---

*Dear Clients and Friends,*

*We would like to welcome you to the Hazeldean Angus Autumn Bull Sale 2024. Prepared on grass and the open paddock of the Monaro, this team is ready to get out and work in your herd! At Hazeldean Angus, we take immense pride in putting together a selection of superior quality Angus genetics, we put everything we have to push the boundaries of genetic gain for the commercial beef industry whilst keeping the all-important traits of structure and docility in balance.*

*This Autumn sale team has plenty of curve bending bulls and some high IMF EBV's to complement. We also have about 250 PTIC heifers, as sold in the previous few years. Half of these females will be there for viewing on sale day, Thursday 2nd of May and will be offered on AuctionsPlus Eastern States cattle sale on Friday 3rd of May. The other half at being sold via AuctionsPlus from our Adelong farm. These heifers will have two different joining dates. A Hazeldean female buyer's rebate (5%) is applied to successful purchase of Hazeldean females – consider these your Hazeldean Frequent Flyers points!*

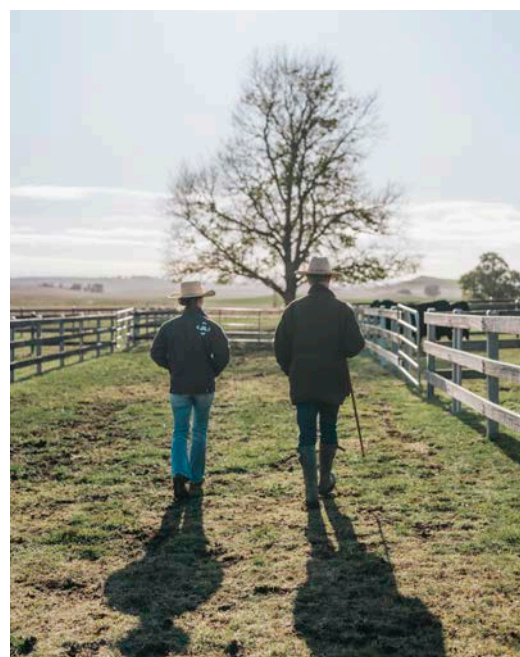
*We are very pleased with how some Hazeldean sires have performed in this cohort. Hazeldean Q1237 has stamped his sons with plenty of calving ease, super docility and very sound feet. Hazeldean Q319 is another high-performance sire with a very big future in our program with a great set of performance data with the phenotype to match.*

*Fertility traits such as days to calving and scrotal size have a direct impact on farm profitability and this catalogue shows how highly we regard fertility with some trait leading young sires in the draft.*

*As always, we deliver every bull on farm for free to clients and the Hazeldean guarantee allows you to with confidence that any misadventures will be attended to promptly.*

*We look forward to seeing you on the Open day, 26th of April or Sale Day, Thursday the 2nd May.*

*Best Wishes,  
Jim and Libby, Bea and Ed along with the whole Hazeldean team.*





## Proven Genetic Performance

### **SELECT from a herd bred under commercial conditions.**

Hazeldean cattle are bred under commercial conditions and share their paddocks with sheep. The main breeding herd is located in the foothills of the Snowy Mountains with long cold winters, severe frost and a late spring. Hazeldean females are expected to re-breed before the Spring flush and as such are selected for high fertility under low nutrition levels. They are well-known for their hardiness and ability to thrive. Their hardiness suits northern conditions also where animals must work in the heat and be capable of storing energy quickly as body fat and not fall in a heap after calving. With experience in the south and the north we know these are the sort of cattle that will perform in both environments.

### **INVEST in a cow herd with TRUE depth of breeding**

The bulls bred at Hazeldean come from a 3500 strong female herd with unequalled depth of breeding spanning 60 years. Hazeldean cattle breed true to type and reflect their breeding heritage with uniform high performing calves that achieve premiums in all markets.

### **BOOST your herd's fertility**

Hazeldean Angus are renowned for high fertility, and good mothering to give consistent and superior reproductive performance. Selection pressure on females to breed a live calf every year from 2 years of age is strict and any female who fails to do so for any reason is "out".

### **ACHIEVE higher prices at the saleyards.**

Hazeldean blood animals command higher prices at market and are sought after by feedlotter and backgrounders.



## Hazeldean Breeding and Management

Established in 1927, Hazeldean Angus is part of Hazeldean Pty Ltd, a pastoral enterprise owned and operated by the Litchfield family of Cooma, NSW since 1865. Hazeldean provides the beef industry with large numbers of high quality, high performing stud and commercial Angus bulls. Seedstock and commercial beef production has been Hazeldean's business for over 150 years. The company understands genetics and what's important to run a successful commercial beef cattle operation.

The Hazeldean herd consists of 3500 commercial, APR and stud cattle, which are bred and grazed on the Monaro in southern NSW. Hazeldean cattle are renowned as being "good doing", hardy cattle that will thrive in any climate. The female herd has a reputation of exceptional fertility, lower than average birth weights, excellent calving ease, teamed with high growth and above average carcass.

Hazeldean's core business is providing functional, profitable bulls to the commercial beef industry and this means first of all maximizing the number of pregnancies and the number of live calves hitting the ground, building on that base rapid growth rates and on top of that superior carcass data. This is the basis of any successful breeding enterprise.

Hazeldean selects for quiet temperament in their breeding program and sire selection and their cattle have an enviable reputation of being exceptionally quiet and easy to manage. This shows in the docility EBV's of Hazeldean cattle. Temperament is highly heritable, it affects carcass quality, growth rate, and handling – any animal that shows bad temperament is culled.

### Stud & Performance History

The Hazeldean Angus herd was established in 1927, replacing a herd of primarily shorthorn cattle that had run on the property for many years. In 1952 the stud was founded with the purchase of in-calf heifers from six New Zealand studs. These heifers were specially selected for scale, length and docile temperament – traits that still remain important to the stud 60 years later. As the commercial herd was of a very high standard and as a means to fully utilize the foundation sire "Wallah Ottoman", a selection of top grade commercial females were selected to join the bull-producing herd. The strength of the Hazeldean herd has always been its ability to produce large numbers of high performing bulls with emphasis always on commercial reality.

In 1960 Hazeldean became one of the first beef seedstock producers anywhere in the world to embrace the concept of Performance testing and has continued to use accurate measured production in its selection and breeding programmes ever since. Hazeldean was the first beef herd in Australia to trial Breedplan and was later chosen as the site of the national launch in 1985. Hazeldean Angus is involved in carcass and feedlot performance trials and sire progeny testing programmes to identify the leading sires for profitability to the industry.

**Bull Sales** Around 500 bulls are sold each year by auction at selling centres located at "Hazeldean", Cooma, NSW (May & Sept), Drillham QLD (August) and Tamworth, NSW (August).

**Female Sales** Commercial females and select registered females are sold on-property at Hazeldean's annual Female Sale in Cooma in May.

**Semen Sales** Semen is available from Hazeldean's top sires. Contact Hazeldean or view our website [www.hazeldean.com.au](http://www.hazeldean.com.au)





## Hazeldean Breeding and Management

---

### Management & Breeding Programme

The Hazeldean properties are extensive grazing properties suited to commercial beef production. The Hazeldean herd is run under strict commercial conditions with stud cows sharing their paddocks with sheep and only receiving supplementary feeding in drought. Hazeldean sources the most proven and high performing Angus sires and multiplies these genetics throughout the herd using their comprehensive (AI) and (ET) programme. Elite Hazeldean cows are flushed and used as donors in the ET programme.

The provision of bulls by a seedstock breeder to a commercial breeder must do five things. They are, in order of importance, as follows:

1. Serve cows effectively and efficiently so that the number of pregnancies in your herd is as high as it can be over a 6 week joining.
2. Produce daughters that are fertile at an early age, able to calve unassisted at 2 years of age and breed back every year thereafter.
3. Sire calves that grow quickly to reach maximum liveweight at the turnoff time targeted by the breeder.
4. Have sufficient constitution and athleticism to survive and breed effectively for a number of years.
5. Sire calves with valuable carcasses that maximise returns to the breeder and the processor for each kilogram of beef produced.

It is vital that these targets are met in this order for beef producers to make money out of beef cattle and this is the focus of the Hazeldean program.



## Purchasing a bull from Hazeldean

### Health

- ✓ Bulls are vaccinated for Pestivirus, Vibriosis and 7in1
- ✓ The Hazeldean herd maintains a JBAS 8 score.
- ✓ All sale bulls are thoroughly assessed by a bull fertility technician prior to sale which includes a full examination of reproductive organs, and semen tested. Animals displaying faults likely to interfere with a normal productive life are culled.

### Fertility

We recommend that you organise a pre-mating bull examination at least 6 weeks prior to joining to ensure that your bulls are in the best of health and capable of producing pregnancies. The procedure should include a serving ability test where the bull is observed serving a cow/heifer.

### Structural integrity

Hazeldean has an uncompromising approach to structural assessment. All Hazeldean bulls and females are annually assessed and those failing the assessment are culled. Before cataloguing, each animal is inspected by an independent assessor to ensure a high standard of structural correctness, particularly with regard to conformation, shoulders, legs and feet. (See Beef Class Structural Assessment System). Only animals that pass this rigorous inspection are entered for sale. No animal has received treatment to their feet.

### Temperament

All bulls have been assessed for temperament. Any animals displaying aggressive or dangerous behaviour is culled immediately.

### Semen Terms & Conditions

Hazeldean retains semen rights on all bulls unless otherwise agreed upon, according to Hazeldean Semen Terms and Conditions. See back of catalogue for details.



Bulls are freeze branded on the near side rump with the Hazeldean brand and their number.

## Our Guarantee and Replacements, Refunds, Credits

Although we do our very best to ensure every bull we catalogue sees out many years of good service, occasionally premature breakdowns occur. In this event we guarantee unconditionally all bulls for 12 months from purchase and further if poor reproduction results from a genetic defect we were unaware of pre-sale. Our policy is to look after the people who look after us so if there is a problem please let us know. To resolve the issue of a bull breakdown we will work with you to achieve the best outcome for your breeding enterprise. In the instance of a bull breaking down during the breeding season we will endeavour to find a replacement and get him to you ASAP. If you are able to cover the breakdown with a spare, then we will either offer a replacement at a later date or issue a credit equivalent to the purchase price of the original bull that you can use at a future sale.

## Animal Health

Although Hazeldean employs best practice procedures in livestock husbandry and does its best to ensure every animal catalogued for sale is free from disease, internal parasites and external parasites, it does not guarantee that any sale animal is free of disease, internal parasites or external parasites.



## Beef Class Structural Assessment System

**Structural problems in cattle have a substantial effect on both the reproductive and growth performance of a beef herd. It is widely recognised that structural problems in sires have detrimental effects on conception rates, calving patterns and thus profitability.**

Similarly, females with inadequate structural characteristics are more prone to weaning lighter calves or conceiving later in the breeding season than their more functional counterparts. These structural problems are filtered through the supply chain resulting in reduced income for the producer, feedlot and thus reducing the overall productivity of the Australian Beef Industry.

Over the past decade, use of the Beef Class Structural Assessment System in the seedstock industry has produced a marked improvement in herds which have shown commitment to using the information appropriately. Through these dedicated breeders, there has been a flow on affect of structural improvement throughout all sectors of the beef cattle industry.

Liam Cardile of 'BEEFXCEL' structurally assesses many of the leading seedstock herds in Australia. 'BEEFXCEL' is not involved in any genetic marketing or specific breeding advice and therefore has no conflict of interests to influence their stock appraisal. The integrity of the structural data provided by 'BEEFXCEL' is recognised throughout the industry as Liam is a fully INDEPENDENT assessor.

### Hazeldean Structural Program

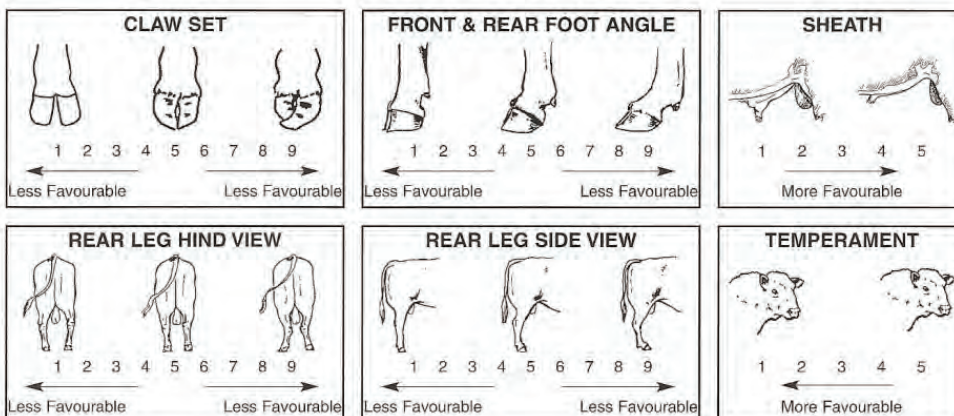
The Hazeldean Sale Bulls have been independently structurally assessed to maximise the quality of stock on offer. Any animals deemed inadequate have been removed from the sale draft.

The Hazeldean sale bulls were assessed by Liam Cardile of BEEFXCEL. In addition to annual bull assessments, Hazeldean has recently completed a full female herd assessment program. An ongoing program of assessing first calving females during lactation also helps to further strengthen the structural soundness of the entire Hazeldean breeding herd.

### How to use The Beef Class Structural Assessment System

The Beef Class Structural Assessment System uses a 1- 9 scoring system

- A score of 5 is ideal. (Note: Temperament Score of 1 is preferable)
- A score of 4 or 6 shows slight variation from ideal, but this includes most animals. An animal scoring 4 or 6 would be acceptable in any breeding program.
- A score of 3 or 7 shows greater variation but would be acceptable in most commercial programs. However, seedstock producers should be vigilant and understand that this score indicates greater variation from ideal.
- A score of 2 or 8 are low scoring animals and should be looked closely before purchasing.
- A score of 1 or 9 should not be catalogued and are considered culls.



Liam Cardile – Beef Xcel – 0409 572 570

## Looking after your new Hazeldean bull

---

Bulls are like us. Some settle easily in to a new location - others don't. Here are a few pointers to help your new bull/s settle in.

Bulls are social animals and there is a hierarchy within each mob. Usually we have around 4 mobs of bulls for any one sale. If bulls are purchased from different mobs and put together they will very likely fight to sort out who's "boss". If you buy more than one bull, find out from us at the end of the sale what mobs are represented in your purchases and we can tell you whether you are likely to experience fighting when we get them home for you.

When the bull/s arrive at your home, let them settle in by leaving them in the yards overnight and observe how they are reacting to their new home. Give them fresh water and good quality hay. If they are fighting you might have to split them, depending on how serious it is. Two bulls fighting is often less of a concern than 3 bulls fighting as sometimes the third bull will broadside one of the bulls locked in battle and serious injury can result. If you have purchased only one bull, then find a mate or two for him straight away. If you have bought multiple bulls from a number of different management groups or studs it is often better to put them all together at once. Introducing new bulls into a mob one at a time can lead to the new bull being given a very hard time indeed by his contemporaries. Sometimes a young bull will team up with a bigger older bull but often it should be one or two cows or steers. Bulls left on their own are much more likely to jump or push through fences and be unsettled and once they get into the habit are hard to stop.

We do not use dogs on our cattle so your new bull might react strangely if you use a dog. In all instances read the body language of your new bull/s and take appropriate action. Sometimes this might involve a stint in the yards, other times it might be better to let them into a paddock straight away with one or two cows. The added advantage of running them with cows is that it will help them develop immunity to foreign bugs they may not have previously encountered well before the breeding season. Whatever the circumstances, do not take the view that everything will be fine because sometimes it isn't and each bull will be different. For further advice please do not hesitate to call us.

Your new bull will be up to date with vaccine and parasite treatment at the time of sale however a booster vaccination should be given annually including Vibriosis, Pestivirus and 7 in 1. These vaccinations can be given anytime to fit in with your normal management routine however 4 to 6 weeks before mating is a good time and this also gives you a chance to inspect all your bulls and establish their general soundness before the breeding season.

Prior to mating a breeding soundness evaluation of all the bulls you own is a good idea. You may wish to undertake this yourself or get a vet to do it for you. Bulls should be assessed for reproductive soundness including palpation and measuring of the testicles. Testes should be at least 32 cm in circumference and tennis ball firm, not hard or soft. They should be symmetrical and free from abnormal lumps and bumps. The epididymus at the base of the testicle should not be enlarged or irregular and the cords at the top of the testicle also free of lumps. It is a good idea to observe your bull's actual physical prowess in a serving ability test. When a bull is mounting a cow he must thrust and complete a service fully before he can be given a tick. Stand to the right and to the rear of the bull and check for corkscrew penis. Corkscrew penis is a condition where the end of the penis spirals preventing entry into the vagina. Corkscrew penis will always deviate to the right side of the cow. Also check the bull for muscle tremor, muscle wastage, lameness, favouring of one hind leg or any other indication he may be unsound. Look for other indicators - unevenly grown hind toes can be a sign of hip problems for instance.

Once your bulls have passed through all these hoops they are ready for joining however do not think that you can now take your eye off the ball (so to speak) because during joining an injury is even more likely to occur, or a long standing problem resurface, due to the workload. Inspect your bulls twice a week at close proximity. Look for the same things you observed in your pre joining check. When you have passed the first 3 weeks of joining make sure there are not large numbers of cows cycling. Even if your bull is serving well and normally there is always a small risk he may be infertile due to poor quality sperm. This may be a temporary or permanent problem. If you are in any doubt replace the bull with another.

It is important to remember that the fundamental profit driver in a beef enterprise is reproduction. It is therefore vital to spend time making sure your bulls are working properly.

During the non-breeding season DO NOT LET YOUR BULLS GET FAT!! Bulls will last longer, have fewer feet problems and will be more agile and virile generally if they are not overweight. The best mature bull paddock is often your worst paddock. Young bulls may need a better paddock as they are still growing.

At the 6 week pre joining check-up, move all bulls to better paddocks to start lifting them before mating.

If you are in any doubt as to the soundness of your bull/s, or what you should be doing or looking for, please call us.

*Jim Litchfield*



## Understanding EBV's

---

**Group Breedplan analyses the growth and production attributes of beef cattle and provides predictions of the genetic merit of individual animals called Estimated Breeding Values (EBV's).**

Breedplan is logical and straight forward and provides the only solution to the otherwise impossible task of weighing up individual bull performance and adjusting for pedigree and the performance of brothers and sisters. It gives the correct weighting to all available information and then gives a value and accuracy level for each trait measured. The higher the accuracy percentage, the more confidence you can have in the figure. Without any figures selection becomes guess work. EBV's are shown as +ve or -ve differences from the breed base. The average EBV's for traits change over time as the breed makes genetic progress. The breed average EBV's provide a useful benchmark for comparisons of EBV's for individual animals.

The following is a brief explanation of the figures and what to look for. Remember, all the figures are calculated from the animal's individual performance AND the performance of its relatives that have also been measured or weighed. This is important as it improves the accuracy of the predicted performance of the bull you purchase. For example, if the bull you purchased was light for birth weight, yet one of its parents was heavy at birth, there is a fair chance that some of your bull's calves will inherit the grandparent's high birth weight. Breedplan works out the likelihood of this occurring and includes it in the estimated figure. The same applies to all other measured traits.

### **CALVING EASE**

#### **Calving Ease (CE)**

Appears on sires only and is self explanatory to a large extent. CE (DIR) is Calving Ease direct and refers to the amount of calving difficulty you can expect from this bull directly from the cows he is joined to. CE (DTRS) is Calving Ease daughters and refers to the amount of calving difficulty you can expect from his daughters.

***A plus figure in both instances is good.***

#### **Gestation Length (GL)**

Some cattle have shorter pregnancies than normal and some longer pregnancies. As growth starts from conception, generally a bull with short gestation length EBV will sire smaller calves at birth than one with a longer gestation length EBV. It also means that the cow has more time to recover from calving to get back in calf for next year. ***A negative figure here is good.***

#### **Birthweight (BWT)**

Birthweight generally applies mostly to those looking for a heifer bull. Generally at Hazeldean we get a little nervy when we go much above +4.5 for our own heifer joining, although some areas seem to be able to tolerate more birthweight than we can on the Monaro. Even if you are not looking for a heifer bull, keep in mind that a bull with a big birthweight will sire heifer calves and you may run into problems when his daughters calve down. In a well designed program, birthweight EBV should be able to gradually increase as the size of your heifers at 2 years of age increases through selection for improved growth rate.

***A low figure here is good***, especially over heifers, but be careful that it does not get so low that calf mortality starts to increase. Also, you should challenge your heifers to be able to handle higher birthweights, otherwise calving ease will go the wrong way.

### **GROWTH & MATERNAL**

#### **200, 400 & 600 Day Growth**

These figures indicate the sort of weight differences you can expect from the progeny of these bulls (as an average) at 200, 400 and 600 days of age. In other words, if you have two bulls and for 600 Day weight one is +70 and the other is +80, you could expect the bull who is +80 to sire calves that would average 5kgs more bodyweight (as the sire provides half the genes to the calf, that is 10kg divided by 2) at 600 days than the bull who is +70. ***A plus figure in all areas is good***, relative to your production, provided birthweight does not get out of control.

#### **Mature Cow Weight**

Provides an estimate of the genetic differences between animals in cow weight at 5 years of age. Obviously smaller cows have less maintenance requirements and those that can still wean heavy calves are valuable however remember there is a high negative correlation between low Mature Cow Weight and growth meaning selection for this trait can put pressure on growth rate of progeny. More efficient "easy-care" cows have a MCW lower than their 600 DWT and we select for this.

## Understanding EBV's

---

### Milk

Milk is the figure that most people find hardest to understand. How can you work out how much milk an animal is capable of producing in its offspring with out actually milking them and measuring the quantity? Milk is obviously an important consideration especially for those beef producers turning calves straight off their mothers. Too much of a good thing can lead to udder problems and also result in failure to get back in calf early, especially if a really good milker hits a tight Spring. There are some cows that will milk well and yet still retain enough body condition to start cycling soon after calving. They are obviously very desirable. **A plus figure here is good** but beware of the problems associated with extreme production.

### FERTILITY

#### Scrotal Size (SS)

There is a strong correlation between scrotal size and both male and female fertility. Bulls with big testicles generally sire more fertile daughters. You may notice a discrepancy between scrotal size on sale day and the EBV. This is because testicles, like just about everything else, grow at different rates in different bulls and rankings will therefore change. As with all Breedplan analysis, information on relatives also has an effect. The measurement for the EBV was taken at the same time as we started to program the heifers for their AI program back in early September. The reason we did this was to identify those bulls who failed to reach sexual maturity at the minimum age we want our heifers to be cycling. We cull all bulls who fail to reach a minimum of 30cm at 12 months of age as these animals, if allowed to go through into the sale group, will be more likely to breed heifers who will not get in calf early. **A plus figure here is good.**

#### Days to Calving (DC)

This figure only appears on sires and is an indication of the time taken for his daughters to get back in calf after calving. Some cows take longer to return to their normal heat cycle after calving than others. Those that recover quickly and need fewer days before they get back in calf are obviously more worthwhile having around. **A minus figure here is good.**

### CARCASE

#### Carcase weight (CWT)

Carcase weight refers to the difference you can expect in the weight of this bull's steer progeny when slaughtered at 650 days of age. Remember that this is an EBV and therefore the actual contribution of this trait to the bull's offspring is half of the number published. This is because only half of any animal's genes come from the sire. The other half comes from the mother. **A high figure is good.**

#### Eye Muscle Area (EMA)

This trait is measured by ultrasound when the bulls are approximately 15-18 months old. As muscling is consistent throughout the body, EMA is a good indicator of overall muscle content when the measurement is taken and analysed in the light of total body weight. It is actually impossible to have an animal with more meat in his hindquarter than in his forequarter, or vice versa. Many years ago, Professor Rex Butterfield dissected numerous carcasses from many breeds to prove that as a proportion of total muscle weight, almost exactly the same amounts of muscle were found in various parts of the animal regardless of breed or physical appearance. Despite general opinion to the contrary, it has been recently proven that increased muscle is not linked to poor fertility or calving difficulty. **A plus figure here is good.**

#### Fat Depth – Rib & Rump

Also calculated from ultrasound measurement, high fat depth EBV's will mean bulls that leave fatter carcasses and lower lean meat yield. However, recent research has shown that bulls that are positive for fat generally sire more fertile daughters than those that are negative, all other things being equal. Care has to be taken, therefore, not to select poorer types that lack doing ability and constitution resulting in low fertility. This EBV needs to be kept in balance and **extremes of plus or minus should be avoided.**

#### Retail Beef Yield (RBY%)

This figure is calculated to give you the expected amount of retail beef as a percentage of the total carcase weight in a 300 kg carcase sired by this bull. Again you need to understand that as animals receive half their genes from their mother and half from their father, this figure needs to be divided by two to ascertain just how much is a result of the bull's influence.

## Understanding EBV's

---

### Intramuscular Fat- Marbling (IMF%)

As abattoir data is always slow, there are big benefits in measuring live cattle. The Animal Genetics and Breeding Unit (AGBU) at Armidale with Meat Research has been researching marbling scanning since 1996 and has come up with some very Corporation, CRC and Breed Society support encouraging results for genetic evaluation. IMF% and actual marble score are reasonably well correlated and therefore selection on IMF% will improve marbling. To further improve accuracy, the figure or IMF% calculated by Breedplan also includes abattoir data and overseas EPD data, as well as ultrasound. The US data on marbling is generated purely from abattoir carcase information.

**A plus figure here is good.**

### \$ Index Values

There are currently four selection indexes calculated for animals within the Angus BREEDPLAN analysis. The Angus Breeding Index is a general purpose selection index that is suitable for use in the majority of commercial beef operations, whereas the Domestic, Heavy Grain and Heavy Grass selection indexes are specific to beef operations targeting a defined production system and market endpoint.

**Angus Breeding Index** - estimates the genetic differences between animals in net profitability per cow joined in a typical commercial self replacing herd using Angus bulls. This selection index is not specific to a particular production system or market end-point, but identifies animals that will improve overall profitability in the majority of commercial grass and grain finishing beef production systems. The index is particularly suited to commercial producers who sell progeny into different markets, or to seedstock producers supplying bulls to commercial clients who produce for a range of different production systems and market end points.

**Domestic Index** - estimates the genetic differences between animals in net profitability per cow joined in a commercial self replacing herd targeting the domestic supermarket trade, with progeny finished using either grass, grass supplemented by grain or grain finishing systems.

**Heavy Grain Index** - estimates the genetic differences between animals in net profitability per cow joined in a commercial self replacing herd targeting pasture grown steers with a 200 day feedlot finishing period for the grain fed high quality, highly marbled markets.

**Heavy Grass Index** - estimates the genetic differences between animals in net profitability per cow joined in a commercial self replacing herd targeting pasture finished heavy steers. Further information regarding each selection index is available from [www.angusaustralia.com.au](http://www.angusaustralia.com.au)

**Trial Docility** - This EBV is expressed as the difference in the percentage of progeny that will be scored with acceptable temperament. **Higher scores are more favourable.** For example, a bull with an EBV of +20 would be expected to on average produce 15% more progeny with acceptable temperament than a bull with an EBV of -10.

### Heritability of Traits

Some traits are more likely to be inherited than others. The most **highly heritable traits** (over 35%) are: birthweight, 600 day weight, mature cow weight, scrotal size, rump fat, retail beef yield and docility. Traits of **medium heritability**, (20 -30%) are gestation length, eye muscle area, rib fat and 200 & 400 day weight and those with the **lowest heritability**, (less than 20%) are days to calving, calving ease and milk.

The team at Hazeldean systematically collect as accurately as possible all the required information that is then submitted to Breedplan for analysis. Every calf is tagged and weighed at birth, again at 200 days, 400 days and 600 days. Every animal is scanned for carcase data, all male animals have testicles measured at 400 days and structural and docility assessments are done by an independent assessor (Liam Cardile from BeefXcel).







# TransTasman Angus Cattle Evaluation - Mid March 2024 Reference Tables



BREED AVERAGE EBVs										
	\$A	\$D	\$GN	\$GS	\$A-L	\$D-L	\$GN-L	\$GS-L	\$PRO	\$T
Brd Avg	+201	+166	+265	+185	+346	+299	+414	+387	+149	+186

\* Breed average represents the average EBV of all 2022 drop Australian Angus and Angus-influenced seedstock animals analysed in the Mid March 2024 TransTasman Angus Cattle Evaluation .

PERCENTILE BANDS TABLE										
% Band	\$A	\$D	\$GN	\$GS	\$A-L	\$D-L	\$GN-L	\$GS-L	\$PRO	\$T
1%	+278	+235	+370	+266	+454	+396	+544	+519	+235	+238
5%	+257	+215	+341	+243	+423	+369	+508	+481	+210	+224
10%	+245	+204	+325	+231	+407	+354	+489	+461	+197	+216
15%	+237	+197	+313	+222	+397	+344	+476	+448	+188	+211
20%	+231	+192	+305	+216	+388	+336	+465	+437	+181	+207
25%	+225	+187	+298	+210	+381	+330	+456	+428	+175	+203
30%	+221	+183	+291	+205	+374	+323	+448	+420	+170	+199
35%	+216	+179	+285	+200	+368	+318	+440	+413	+165	+196
40%	+212	+175	+279	+196	+362	+312	+433	+405	+160	+193
45%	+208	+171	+273	+191	+356	+307	+426	+398	+156	+190
50%	+203	+168	+268	+187	+350	+302	+418	+391	+151	+187
55%	+199	+164	+262	+183	+344	+297	+411	+384	+147	+184
60%	+195	+160	+256	+178	+338	+291	+403	+377	+142	+181
65%	+190	+156	+250	+173	+331	+285	+395	+369	+137	+178
70%	+185	+152	+243	+168	+323	+279	+386	+361	+131	+174
75%	+179	+147	+236	+162	+315	+271	+376	+351	+125	+171
80%	+172	+141	+227	+155	+306	+263	+365	+340	+118	+166
85%	+164	+134	+217	+147	+294	+252	+350	+326	+110	+160
90%	+154	+125	+203	+137	+278	+239	+331	+308	+98	+153
95%	+137	+112	+182	+121	+253	+217	+300	+279	+81	+141
99%	+107	+87	+146	+91	+202	+175	+244	+219	+47	+120

\* The percentile bands represent the distribution of EBVs across the 2022 drop Australian Angus and Angus-influenced seedstock animals analysed in the Mid March 2024 TransTasman Angus Cattle Evaluation .

**HAZELDEAN AUTUMN BULL SALE 2024 EBV SUMMARY TACE MID MARCH**

LOT	Visual Id	MGNT G	reg	sire_id	CE DIR	EDTR	Bwt	200	400	600	Mwt	DC	SS	DOC	Cwt	EMA	Rib	P8	RBV	IMF	\$A	HGRN
1	NHZ22T806	1	APR	NHZQ319	-0.4	6.2	3.5	56	97	127	118	-7.8	4.1	46	71	6.4	0.5	0	-0.3	3.8	\$230	\$306
2	NHZ22T1159	1	APR	VHGP64	9.3	6.9	1.9	54	100	138	129	-6.9	3	17	77	5.1	1.7	2.7	-0.3	2.9	\$233	\$303
3	NHZ22T1174	1	APR	NHZQ1580	4.7	3.3	2.7	44	91	113	109	-9	3.7	16	53	10	0.7	-2.3	0.9	5.1	\$254	\$320
4	NHZ22T2290	1	APR	NHZR23	2.9	8.3	3.2	51	103	135	118	-7.4	3.3	25	89	8.8	-0.5	-1.9	0.5	5.5	\$264	\$347
5	NHZ22T75	1	APR	NORL519	1.2	1.5	4.5	55	95	129	102	-3.8	-0.3	27	72	10.9	-0.6	-0.6	0.9	3.8	\$243	\$319
6	NHZ22T475	1	APR	NHZR303	6.8	4.2	2.5	63	106	142	127	-5.5	3.2	37	84	8.3	-0.4	-2	0.7	3.4	\$257	\$340
7	NHZ22T245	1	APR	NHZQ319	5.3	7.9	2.7	58	112	150	134	-9.8	3.3	46	80	4.2	2.4	0.2	-1	3.7	\$259	\$332
8	NHZ22T406	1	APR	NBHP392	1	-5.4	3.9	63	112	142	107	-3.1	5.8	12	73	2.2	-1.5	-1.2	-0.8	2.6	\$190	\$277
9	NHZ22T430	1	APR	NHZR1561	2.1	5.2	4.4	61	106	145	143	-8.2	2.5	25	87	2.3	-4	-3.2	0.7	2.6	\$239	\$295
10	NHZ22T39	1	APR	NHZP16	6.1	3	2.7	61	113	151	137	-5.1	3.4	23	88	2.8	1.3	2.7	0.1	-0.2	\$214	\$266
11	NHZ22T52	1	APR	NORL519	1.5	5.6	4.6	66	115	152	130	-3.7	1.2	38	95	5.3	-2.3	-1.8	0.1	3.9	\$246	\$328
12	NHZ22T476	1	APR	TFAN90	3.6	2.8	3.5	42	87	115	86	-4.2	3.4	20	62	9.2	2.2	4.1	0.2	3.8	\$218	\$292
13	NHZ22T509	1	APR	NURN70	2.9	-1.9	2.7	50	92	116	135	-5.8	3.5	9	60	6.9	-2.5	-3.1	0.8	3.2	\$186	\$239
14	NHZ22T514	1	APR	NURN70	1.6	3.8	3.7	62	103	137	128	-6	3.7	14	81	4	0.1	-1.2	0.1	2.3	\$219	\$282
15	NHZ22T568	1	APR	NHZQ319	6.1	10.7	2.6	51	102	128	132	-8.4	2.7	19	69	0.2	1.3	0	0.2	2	\$222	\$277
16	NHZ22T672	1	APR	NHZR1581	-0.9	7.3	4.8	57	95	124	106	-6.7	3.5	14	73	5.3	1.9	0.4	-0.2	2.7	\$221	\$294
17	NHZ22T719	1	APR	NHZQ1237	7.4	5.1	4.3	44	89	119	89	-7.4	3.8	30	77	8.5	-1.6	-0.8	0.9	1.4	\$222	\$267
18	NHZ22T780	1	APR	NURN70	-0.9	4.7	4.9	57	101	134	120	-5.7	5	27	82	8.2	-0.9	-0.9	1	2.1	\$223	\$286
19	NHZ22T800	1	APR	NHZQ319	7.6	4	2	47	96	118	119	-7.7	1.9	31	71	6.4	1.3	-0.6	0.3	3	\$221	\$284
20	NHZ22T1212	1	APR	NHZR303	9.2	4.5	1	50	93	123	109	-6.3	2.4	40	67	2.8	1.3	-1.6	-0.5	5.1	\$220	\$294
21	NHZ22T258	2	APR	NHZR1561	2.7	7.4	4.4	47	83	111	104	-5.4	3	12	51	6.1	-0.6	-0.6	0.5	3.4	\$204	\$256
22	NHZ22T282	2	HBR	VTMQ514	7.6	5.6	3	49	80	101	86	-8.9	4.1	27	55	4.3	0.1	-0.3	-0.2	3.6	\$230	\$295
23	NHZ22T437	2	APR	NORN432	5.4	8.5	3.1	58	103	151	125	-0.2	1	27	105	6.1	-2.3	-4.4	1.4	0.4	\$181	\$248
24	NHZ22T443	2	APR	VHGP64	-0.8	3.3	5.7	58	98	132	118	-5.8	3.5	21	68	3	-2.6	-2.8	0.6	2.6	\$209	\$266
25	NHZ22T456	2	APR	CSWQ011	7	8.8	2.7	48	86	116	85	-6.3	1.9	38	79	2.1	2.7	3.6	-1.3	4.3	\$224	\$310
26	NHZ22T516	2	APR	NHZQ1229	8.2	6.9	1.5	43	81	107	68	-4.9	4.4	16	51	4.1	-0.4	-1.2	0.3	3.8	\$211	\$270
27	NHZ22T528	2	APR	NHZQ319	7.4	8.1	3.1	40	77	106	112	-8.6	1.8	21	57	4.9	1.7	1.6	0.3	2.6	\$205	\$252
28	NHZ22T535	2	APR	NHZR274	2.3	5.2	3	61	103	137	125	-3	3.3	8	69	5.6	0.3	0	-0.3	3.3	\$207	\$287
29	NHZ22T563	2	APR	NORN432	-0.5	7.6	5.8	57	91	118	127	-5.9	2.1	8	68	2.1	-2.8	-3.8	0.4	2.1	\$182	\$244
30	NHZ22T632	2	APR	NHZQ1237	5.4	7.1	5.4	58	97	128	108	-5.8	3.5	33	67	8.4	-1.7	-3.5	1.4	1.3	\$237	\$294
31	NHZ22T707	2	APR	NHZQ1237	3.2	3.1	4.4	52	95	119	75	-6.3	3.4	34	88	9.2	0.7	3.2	0.6	1.6	\$256	\$322
<b>ANGUS BREED AVERAGE EBVS</b>					<b>1.7</b>	<b>2.8</b>	<b>4</b>	<b>51</b>	<b>92</b>	<b>119</b>	<b>102</b>	<b>-4.6</b>	<b>2.2</b>	<b>21</b>	<b>67</b>	<b>6.4</b>	<b>-0.1</b>	<b>-0.3</b>	<b>0.5</b>	<b>2.3</b>	<b>\$201</b>	<b>\$265</b>
								TOP 5%				TOP 10%				TOP 30%						



## HAZELDEAN AUTUMN BULL SALE 2024 EBV SUMMARY TACE MID MARCH

LOT	Visual Id	MGNT G	reg	sire_id	CE DIR	EDTR	Bwt	200	400	600	Mwt	DC	SS	DOC	Cwt	EMA	Rib	P8	RBV	IMF	\$A	HGRN	
32	NHZ22T1040	2	APR	NHZQ1237	-0.2	4.7	5.8	54	96	143	125	-4.9	4.7	34	80	7.6	-2.6	-2.1	0.8	2.4	\$201	\$255	
33	NHZ22T1954	2	APR	NHZR23	5.3	3.2	3.6	45	89	112	86	-5.9	4.4	24	51	10.6	3.1	1.5	1	2.6	\$236	\$304	
34	NHZ22T2086	2	APR	NHZR556	2.6	4	3.5	55	101	139	124	-2.3	1.8	26	89	4	-0.9	-1.2	0.2	1.9	\$179	\$245	
35	NHZ22T767	2	APR	NHZQ1237	4.1	1.9	4.9	41	65	94	72	-6.1	3	41	55	5.6	1	0.7	-0.2	4.5	\$197	\$261	
36	NHZ22T804	2	APR	NURN70	1.6	6.1	1.7	45	80	95	81	-7	3.7	13	55	12.5	1.4	0	1.6	2.1	\$236	\$302	
37	NHZ22T815	2	APR	NHZR1561	-8.7	-3.1	5.4	55	98	123	117	-4	0.8	19	64	8.1	-0.9	-0.9	0.6	4	\$195	\$274	
38	NHZ22T1099	2	HBR	NHZR274	2	3.7	2.7	51	85	117	104	-3.9	4.7	18	62	9.4	-1.6	-3	1.2	2.8	\$196	\$264	
39	NHZ22T1119	2	APR	NHZQ1237	-1.2	5.1	4.2	44	83	112	91	-7.9	5	20	66	7.7	1	1.9	0.2	3.7	\$222	\$286	
40	NHZ22T1145	2	HBR	NURN70	3.8	7.7	3.3	56	106	134	130	-8.2	3.2	35	84	2.5	1.3	0.9	-0.1	2.3	\$238	\$299	
41	NHZ22T1855	2	APR	NHZR248	5.3	0.8	4.1	51	92	127	98	-4.9	2.4	15	67	-1.2	-0.5	-2.4	-0.7	5	\$201	\$273	
42	NHZ22T1870	2	APR	NHZR5	1.6	7.6	3.8	47	101	138	144	-3	1.6	48	67	5.2	1.7	0.9	-0.1	3.1	\$171	\$222	
43	NHZ22T1956	2	APR	NHZQ1237	9.2	9.6	1.4	43	83	106	54	-7.5	4	30	62	16.9	1.1	2.1	1.5	2.1	\$284	\$359	
44	NHZ22T2090	2	APR	NHZR361	-10	1.5	6.9	53	95	130	126	-5.2	1.4	18	84	7.9	-0.7	-0.2	1	1.1	\$171	\$219	
45	NHZ22T2140	2	APR	NHZQ1237	6.1	7.3	2.5	48	84	114	60	-6.2	2.8	26	75	11	-0.5	1	1.4	1.1	\$258	\$325	
46	NHZ22T2155	2	APR	NHZR597	2.1	5.4	5.5	62	124	167	187	-5.3	0.9	11	107	0.8	-0.5	-1.3	0	2.3	\$203	\$261	
47	NHZ22T2315	2	APR	NHZR912	-0.7	7.4	5.1	61	97	125	111	-5.1	1.2	35	81	2.6	0.1	-1.7	0.3	3.3	\$226	\$306	
48	NHZ22T2498	2	APR	NHZR303	8.4	6.4	2.5	47	85	112	119	-6.6	1.7	8	64	-3.2	1.9	-0.8	-0.4	5	\$200	\$260	
49	NHZ22T2516	2	APR	NHZR1561	-4.4	2.6	5.3	55	94	112	95	-5.1	1.2	16	67	4.7	2.5	3.5	-0.8	4.9	\$222	\$321	
50	NHZ22T403	3	APR	CSWQ011	1.5	-1.7	3.4	50	102	138	127	-3.4	3.1	18	75	9.3	0.1	0.3	0.8	2.7	\$199	\$263	
51	NHZ22T421	3	APR	NURN70	7.8	6	0.7	51	96	132	110	-6.3	5.4	23	82	5.5	0.6	-0.8	-0.5	3.7	\$216	\$286	
52	NHZ22T512	3	APR	NBHP392	4.7	4.9	3.3	62	108	139	106	-6.2	4.1	16	68	-3.6	-0.5	-1.3	-1.3	3.4	\$221	\$304	
53	NHZ22T521	3	APR	NHZM586	-0.6	-2.9	5.3	56	106	135	144	-8.5	3	45	85	5.5	0.4	1	0.7	1.9	\$228	\$280	
54	NHZ22T714	3	APR	VHGP64	-0.6	-4	6.1	57	97	128	125	-7.6	2.7	14	78	7.6	-2.5	-2.4	0.8	3.9	\$236	\$309	
55	NHZ22T1216	3	APR	NHZQ319	-1.7	2.2	5.9	53	103	130	131	-10.7	3.1	31	62	5.4	1.4	-0.5	0.2	2.9	\$239	\$291	
56	NHZ22T62	3	APR	NHZP434	7.4	7.3	4.3	45	75	94	70	-8	2.5	39	57	5	1.6	-0.5	0.9	1.4	\$224	\$276	
57	NHZ22T77	3	APR	NORL519	3	2.8	2.5	50	95	126	104	-1	0.3	25	60	9.3	-1.9	-2.5	0.3	5.4	\$203	\$291	
58	NHZ22T92	3	APR	USA17960	-0.1	0.6	5.2	60	102	141	139	-1.2	2.8	19	70	7.4	-1.2	-1	0.3	3.1	\$182	\$250	
59	NHZ22T301	3	APR	NORN432	6.9	9.5	3	65	118	152	153	-4.4	1.2	26	97	1.4	0.1	0.3	-0.7	3	\$226	\$311	
60	NHZ22T499	3	APR	NHZM586	3.3	7.8	3.7	45	84	112	93	-8.5	5.4	33	65	13	-2.8	-3.7	2	3.9	\$262	\$322	
61	NHZ22T523	3	APR	CSWQ011	3.1	0.2	3.2	52	99	141	99	-4.2	3.5	31	84	6.6	1	1.4	-0.1	3.6	\$226	\$304	
62	NHZ22T638	3	APR	NHZQ319	-2.3	6.6	3.8	55	101	145	144	-6.9	1.7	20	83	5.6	0	-1.2	0	2.9	\$205	\$268	
<b>ANGUS BREED AVERAGE EBVS</b>					<b>1.7</b>	<b>2.8</b>	<b>4</b>	<b>51</b>	<b>92</b>	<b>119</b>	<b>102</b>	<b>-4.6</b>	<b>2.2</b>	<b>21</b>	<b>67</b>	<b>6.4</b>	<b>-0.1</b>	<b>-0.3</b>	<b>0.5</b>	<b>2.3</b>	<b>\$201</b>	<b>\$265</b>	
					TOP 5%			TOP 10%			TOP 30%												

**HAZELDEAN AUTUMN BULL SALE 2024 EBV SUMMARY TACE MID MARCH**

LOT	Visual Id	MGNT G	reg	sire_id	CE DIR	E DTR	Bwt	200	400	600	Mwt	DC	SS	DOC	Cwt	EMA	Rib	P8	RBV	IMF	\$A	HGRN		
63	NHZ22T697	3	APR	NHZQ1229	4.4	2.9	0.9	44	88	96	55	-7.8	3.5	19	69	8.2	-0.5	0	0.3	5.5	\$268	\$351		
64	NHZ22T726	3	APR	NURN70	-0.8	4.1	4.9	60	103	136	127	-4.4	5.8	32	76	10.5	-1.6	-2.4	1.4	2.4	\$223	\$292		
65	NHZ22T963	3	APR	VTMQ514	5.3	6.5	2.7	46	80	104	91	-11.2	3.6	32	64	6.7	-2	-2.1	0.8	4.4	\$266	\$326		
66	NHZ22T1135	3	APR	NHZR303	4	5.9	3.7	65	101	135	100	-5	3.4	11	90	10.3	-3	-5.3	1	5.5	\$282	\$392		
67	NHZ22T1227	3	HBR	NURN70	2.8	5.9	2.7	44	80	115	100	-6.9	3.2	7	62	11.4	0.9	0.9	0.8	2.8	\$222	\$282		
68	NHZ22T2442	3	APR	NHZR23	9.5	9.6	0.5	52	94	117	94	-7.8	5.1	25	58	6.1	-1.6	-1.2	0.4	4.6	\$266	\$341		
69	NHZ22T2447	3	APR	NHZQ319	6.7	6.6	2.8	54	99	132	116	-8.8	2.7	12	78	10.8	3	2.6	0.5	1.5	\$264	\$335		
70	NHZ22T506	3	HBR	NURN70	3.8	-0.7	4.1	51	86	120	114	-7.3	3.9	-2	63	4.1	-0.1	-0.6	0.6	1.5	\$197	\$245		
71	NHZ22T1848	4	APR	NHZR1650	-0.8	-1.8	5.3	53	108	140	139	-5.6	3.7	29	79	12.9	-2.1	-4	1.9	2.2	\$218	\$274		
72	NHZ22T184	4	APR	GTNM6	-4	0.7	4.1	48	92	115	92	-5.5	0.6	18	66	7.2	-1.3	-0.6	1.2	1.6	\$205	\$261		
73	NHZ22T1468	4	APR	NHZQ1580	-0.6	4.5	5.1	55	100	132	114	-5.7	4.6	19	80	10.3	-1.1	-2	1.1	2.1	\$222	\$283		
74	NHZ22T1651	4	APR	NHZR890	-5.2	5.6	5.1	58	98	130	126	-3	3.8	19	79	-2	0.2	-2.8	-0.3	1.9	\$139	\$184		
75	NHZ22T1681	4	APR	NHZR685	4.6	4.3	1.8	57	100	132	133	-2.7	3	35	68	4.2	-2.7	-4.5	0.7	1.7	\$173	\$232		
76	NHZ22T1882	4	APR	NHZR889	3.2	3.1	4.8	67	114	154	138	-5.3	3.7	16	91	10.6	-1.7	-1.6	2.2	-2.2	\$236	\$289		
77	NHZ22T2039	4	APR	NHZR40	1.9	2.9	4.6	62	116	146	138	-6.6	3.9	14	102	1.3	-3.7	-5.7	0.9	1.7	\$218	\$273		
78	NHZ22T2182	4	APR	NHZR149	1.3	8.2	3.8	46	75	97	75	-5.3	2.9	36	52	6.4	-1.3	-3.1	1.4	2.8	\$209	\$261		
79	NHZ22T2294	4	APR	NHZR154	9.6	1.8	1.5	52	90	126	119	-9.2	2.3	38	81	2.8	-1.1	-3.6	0.2	3.2	\$221	\$282		
80	NHZ22T2540	4	APR	NHZR896	-8.3	4.2	5.9	55	100	134	97	-3.5	2.7	28	87	5.2	-3.6	-3.9	0.5	4.1	\$195	\$273		
81	NHZ22T132	4	APR	NURN70	9	6.6	1.7	37	73	94	75	-7.1	2.6	18	58	8	0.8	1.2	0.5	5	\$233	\$307		
82	NHZ22T194	4	APR	TFAN90	4	6	4.8	50	102	129	123	-4	5	37	63	5.5	0.3	-0.2	1.3	0.6	\$192	\$234		
83	NHZ22T1599	4	APR	NHZR728	6.6	5	2.5	49	90	115	102	-9.2	2.5	28	76	3.2	3.8	3.2	-0.9	4.8	\$250	\$314		
84	NHZ22T2212	4	APR	NHZR40	2.9	4.1	2.6	45	86	105	63	-4.5	3	42	74	5.2	0	0.6	0.1	4.6	\$226	\$306		
85	NHZ22T2275	4	APR	NHZR919	8.6	6	1	44	81	97	90	-6.6	2.7	19	65	9.1	-1.7	-1.6	1.7	2.4	\$229	\$285		
86	NHZ22T2277	4	APR	NHZR873	2.5	6.6	4.3	53	88	109	103	-5.3	2.8	29	55	5.7	-1.7	-3	1.2	1.9	\$208	\$266		
87	NHZ22T2454	4	APR	NHZR468	5	5.5	1.4	42	76	99	72	-7.8	2.8	23	62	7.5	0.4	1.2	-0.1	3.1	\$220	\$285		
88	NHZ22T2101	4	APR	NHZR890	10.3	7.8	0.5	41	72	86	73	-6	2.3	14	63	0.8	1.1	-0.6	-0.2	5.4	\$208	\$274		
89	NHZ22T2431	4	APR	NHZR624	1.2	5.4	3	37	76	104	73	-6.7	3.5	40	63	3.8	4	4.8	-0.6	3	\$194	\$247		
<b>ANGUS BREED AVERAGE EBVS</b>																								
							<b>1.7</b>	<b>2.8</b>	<b>4</b>	<b>51</b>	<b>92</b>	<b>119</b>	<b>102</b>	<b>-4.6</b>	<b>2.2</b>	<b>21</b>	<b>6.4</b>	<b>-0.1</b>	<b>-0.3</b>	<b>0.5</b>	<b>2.3</b>	<b>\$201</b>	<b>\$265</b>	
							TOP 5%			TOP 10%			TOP 30%											





**HAZELDEAN AUTUMN SALE 2024 REFERENCE SIRE SUMMARY TACE MID MARCH 2024**

SIRE NAME	Sons in sale	Society ID	reg	sire_id	CEDIR	CEDITH	Bwt	200	400	600	Mwt	DC	SS	DOC	Cwt	EMA	Rib	P8	RBY	IMF	\$A
HAZELDEAN R889	1	NHZR889	APR	NHQM182	0.8	6.8	4.3	58	103	136	112	-5.9	3	50	81	11	-1.4	-2.1	2.1	0.4	\$248
HAZELDEAN R890	2	NHZR890	APR	NHZF1023	2.1	5.6	5	52	91	122	120	-1.8	3.3	11	77	-1.4	1.6	-1.1	-0.5	3.5	\$152
HAZELDEAN R896	1	NHZR896	HBR	USA17960	-0.1	6.4	4.1	60	103	132	101	-3.9	2.1	40	80	4.1	-3.9	-4.3	0.6	2.5	\$217
HAZELDEAN R912	1	NHZR912	APR	USA17960	-0.7	8.5	3.9	65	108	143	143	-4.1	2.4	48	92	0.5	-2.5	-4	0.5	2.2	\$199
HAZELDEAN R919	1	NHZR919	HBR	USA17960	1.1	6	3.9	57	90	110	131	-4.8	2.9	18	56	5.6	-1.6	-1.5	0.8	1.4	\$185
RENNYLEA L519	3	NORL519	HBR	USA17366	2.2	5.8	4.4	54	100	133	132	-5.8	0.9	31	74	7.9	2.1	2.4	-0.1	4.4	\$239
RENNYLEA NATIONWIDE N432	3	NORN432	HBR	USA17366	0.6	7.1	5.2	71	125	161	166	-2.7	0.7	21	103	5.8	-1.3	-2.7	0.4	1.4	\$211
MURRAY KODAK N70	10	NURN70	HBR	NORK522	1.8	4.5	4.1	56	102	134	140	-6.3	5.2	14	79	9.1	-1.3	-1.5	0.9	3.7	\$232
LANDFALL NEW GROUND N90	2	TFAN90	HBR	USA17262	-0.4	1.9	3.8	56	111	142	128	-2.5	6.6	34	67	12.3	2.3	2.1	0.6	2.5	\$212
BALDRIDGE BEAST MODE B074	1	USA17960	HBR	USA16295	3.2	4.1	3.5	74	117	142	130	-1.2	2.6	29	76	2.1	-2.2	-3.2	-0.1	2.4	\$211
CONNAMARA P64	3	VHGP64	APR	USA16350	8.8	7.2	4.1	72	127	172	159	-4.5	2.6	13	107	10.1	-2.3	-2.3	0.5	3.9	\$279
TE MANIA QARARA Q514	2	VTMQ514	HBR	VTMK138	0.5	6.3	3.8	55	90	110	82	-9.2	3.3	34	70	6.5	-1.7	-1.3	0.1	4.5	\$267
<b>ANGUS BREED AVERAGE EBVS</b>					<b>1.7</b>	<b>2.8</b>	<b>4</b>	<b>51</b>	<b>92</b>	<b>119</b>	<b>102</b>	<b>-4.6</b>	<b>2.2</b>	<b>21</b>	<b>67</b>	<b>6.4</b>	<b>-0.1</b>	<b>-0.3</b>	<b>0.5</b>	<b>2.3</b>	<b>\$201</b>

TOP 30%

TOP 10%

TOP 5%



# Autumn 2024



# Sale Bulls

**1 HAZELDEAN T806 (AI) PV APR AMFU NHFU CAFU DDFU** Born: 03/08/2022 Society Id: NHZ22T806

HAZELDEAN JAIPUR J140  
HAZELDEAN MAGNUM M586  
HAZELDEAN H356  
Sire: HAZELDEAN Q319  
HAZELDEAN JALANA J1510  
HAZELDEAN L1175  
HAZELDEAN H1603

HAZELDEAN KATZEN K416  
HAZELDEAN N638  
HAZELDEAN H826  
Dam: HAZELDEAN Q1792  
HAZELDEAN JACKTON J143  
HAZELDEAN L801  
HAZELDEAN D759

Front	Rear	Front	Rear	Front	Rear	MUSCLE	TEMP.	SHEATH
6	5	5	5	5	6	C+	1	4

Structural EBV's			
TACE	ANGLE	CLAW	LEGS
	+0.96	+0.6	1.08
ACC%	63%	63%	60%

TRANSTASMAN ANGUS CATTLE EVALUATION - FEBRUARY 2024																							
TACE	CALVING EASE				GROWTH & MATERNAL					FERTILITY		CWT	CARCASE					Doc	Angus Index	Dom	Heavy Grain	Heavy Grass	
	DIR	DTRS	GL	B Wt	200	400	600	MWt	Milk	SS	DC	C Wt	EMA	RIB	RUMP	RBV%	IMF%	Doc.					
EBV	-0.5	+6.2	-5.7	+3.6	+56	+97	+127	+118	+19	+4.1	-7.8	+71	+6.6	+0.5	-0.1	-0.3	+3.8	+46	+230	+189	+302	+219	
ACC%	62%	50%	82%	81%	82%	80%	80%	76%	71%	78%	40%	69%	67%	68%	69%	58%	73%	75%					

Stylish son of Q319. We have used Q319 extensively in the program over the last few years, we really like the way he's breeding. 18 traits are better than breed average with top 9% for claw, top 1% for docility and industry leading fertility traits on offer. Suitable for heifers.

Purchaser..... Price.....

**2 HAZELDEAN T1159 (AI) PV APR AMFU NHFU CAFU DDFU** Born: 11/08/2022 Society Id: NHZ22T1159

S S OBJECTIVE T510 0T26  
G A R TWINHEARTS 8418  
G A R YIELD GRADE 2015  
Sire: CONNAMARA P64  
TOPBOS AMBASSADOR F4  
CONNAMARA  
CONNAMARA G24

ARDROSSAN HONOUR H255  
ARDROSSAN MAGISTRATE M101  
ARDROSSAN PRINCESS H230  
Dam: HAZELDEAN Q874  
HAZELDEAN JAIPUR J140  
HAZELDEAN M52  
HAZELDEAN K492

Front	Rear	Front	Rear	Front	Rear	MUSCLE	TEMP.	SHEATH
6	5	5	6	6	6	C+	1.5	4

Structural EBV's			
TACE	ANGLE	CLAW	LEGS
	+1.02	+0.8	1.1
ACC%	66%	66%	63%

TRANSTASMAN ANGUS CATTLE EVALUATION - FEBRUARY 2024																							
TACE	CALVING EASE				GROWTH & MATERNAL					FERTILITY		CWT	CARCASE					Doc	Angus Index	Dom	Heavy Grain	Heavy Grass	
	DIR	DTRS	GL	B Wt	200	400	600	MWt	Milk	SS	DC	C Wt	EMA	RIB	RUMP	RBV%	IMF%	Doc.					
EBV	+9.3	+6.9	-3.7	+1.9	+53	+98	+137	+126	+26	+3	-7	+77	+5.5	+1.7	+2.7	-0.3	+2.9	+16	+233	+183	+304	+222	
ACC%	65%	53%	83%	81%	82%	80%	81%	77%	72%	79%	42%	70%	69%	69%	70%	61%	74%	76%					

Very long and super deep. Upstanding type with a big birth to growth spread. Top 8% for days to calving and top 3% for calving ease. Suitable for heifers.

Purchaser..... Price.....

**3 HAZELDEAN T1174 (AI) PV APR AMFU NHFU CAFU DDFU** Born: 12/08/2022 Society Id: NHZ22T1174

HAZELDEAN JAIPUR J140  
HAZELDEAN MAGNUM M586  
HAZELDEAN H356  
Sire: HAZELDEAN Q1580  
RENNYLEA EDMUND E11  
HAZELDEAN L32  
HAZELDEAN J9

HAZELDEAN F1023  
HAZELDEAN N835  
HAZELDEAN D465  
Dam: HAZELDEAN Q1048  
HAZELDEAN F1023  
HAZELDEAN N368  
HAZELDEAN L476

Front	Rear	Front	Rear	Front	Rear	MUSCLE	TEMP.	SHEATH
6	5	6	6	5	5	C+	2	3

Structural EBV's			
TACE	ANGLE	CLAW	LEGS
	+0.94	+0.5	0.98
ACC%	57%	57%	57%

TRANSTASMAN ANGUS CATTLE EVALUATION - FEBRUARY 2024																							
TACE	CALVING EASE				GROWTH & MATERNAL					FERTILITY		CWT	CARCASE					Doc	Angus Index	Dom	Heavy Grain	Heavy Grass	
	DIR	DTRS	GL	B Wt	200	400	600	MWt	Milk	SS	DC	C Wt	EMA	RIB	RUMP	RBV%	IMF%	Doc.					
EBV	+4.6	+3.3	-5.5	+2.7	+44	+91	+112	+108	+8	+3.7	-9	+53	+10.3	+0.8	-2.3	+0.9	+5.2	+15	+255	+223	+319	+249	
ACC%	66%	55%	82%	82%	83%	81%	81%	78%	73%	79%	43%	71%	70%	70%	71%	60%	75%	77%					

Plenty of carcass traits on offer - top 13% for EMA and top 4% for IMF. Very appealing fertility traits in the top 1 & 9 percentiles. Suitable for heifers.

Purchaser..... Price.....

Top 5%    Top 10%    Top 30%

Ranking in Angus Aust. February 2024

Proven Genetic Performance

www.hazeldean.com.au

# Autumn 2024



# Sale Bulls

**4 HAZELDEAN T2290 (Nat) PV APR AMFU NHFU CAFU DDFU** Born: 02/09/2022 Society Id: NHZ22T2290

RENNYLEA C511  
 RENNYLEA NORH708  
 RENNYLEA E176  
**Sire: HAZELDEAN R23**  
 HAZELDEAN L1301  
 HAZELDEAN N1301  
 HAZELDEAN L416

TE MANIA BERKLEY B1  
 HAZELDEAN F1023  
 HAZELDEAN B723  
**Dam: HAZELDEAN Q1211**  
 ARDROSSAN EQUATOR A241  
 HAZELDEAN J137  
 HAZELDEAN B156

Front	Rear	Front	Rear	Front	Rear	MUSCLE	TEMP.	SHEATH
6	5	5	6	6	5	C+	1	3

Structural EBV's			
TACE	ANGLE	CLAW	LEGS
	+0.98	+0.94	1.36
ACC%	64%	64%	63%

TRANSTASMAN ANGUS CATTLE EVALUATION - FEBRUARY 2024																						
TACE	CALVING EASE				GROWTH & MATERNAL				FERTILITY		CWT	CARCASE					Doc	Angus Index	Dom	Heavy Grain	Heavy Grass	
	DIR	DTRS	GL	B Wt	200	400	600	MWt	Milk	SS	DC	C Wt	EMA	RIB	RUMP	RBV%	IMF%	Doc.				
EBV	+3.1	+8.3	0	+3.1	+50	+102	+134	+116	+21	+3.3	-7.5	+90	+9.2	-0.5	-1.8	+0.6	+5.6	+25	+267	+221	+346	+262
ACC%	65%	55%	81%	81%	82%	80%	81%	77%	73%	78%	44%	71%	70%	70%	71%	61%	75%	76%				

Great feet! Long bull that covers a lot of ground. Top 5% for calving ease daughters and days to calving. Top 20% for EMA and top 3% for IMF! Top 5% for heavy grain index. Note: a little white at the base of testes.

Purchaser..... Price.....

**5 HAZELDEAN T75 (ET) PV APR AMFU NHFU CAFU DDFU** Born: 24/07/2022 Society Id: NHZ22T75

G A R INGENUITY  
 H P C A INTENSITY  
 G A R PREDESTINED 287L  
**Sire: RENNYLEA NORL519**  
 TE MANIA BERKLEY B1  
 RENNYLEA H414  
 RENNYLEA C310

C R A BEXTOR 872 5205 608  
 G A R PROPHET  
 G A R OBJECTIVE 1885  
**Dam: HAZELDEAN J823**  
 HAZELDEAN CARDRONA C677  
 HAZELDEAN G724

Front	Rear	Front	Rear	Front	Rear	MUSCLE	TEMP.	SHEATH
6	5	6	6	5	5	C+	1.5	4

Structural EBV's			
TACE	ANGLE	CLAW	LEGS
	+0.8	+0.64	0.8
ACC%	75%	75%	73%

TRANSTASMAN ANGUS CATTLE EVALUATION - FEBRUARY 2024																						
TACE	CALVING EASE				GROWTH & MATERNAL				FERTILITY		CWT	CARCASE					Doc	Angus Index	Dom	Heavy Grain	Heavy Grass	
	DIR	DTRS	GL	B Wt	200	400	600	MWt	Milk	SS	DC	C Wt	EMA	RIB	RUMP	RBV%	IMF%	Doc.				
EBV	+1.4	+1.4	-2.8	+4.5	+54	+94	+129	+101	+21	-0.3	-3.9	+71	+11.1	-0.4	-0.5	+0.9	+3.7	+27	+241	+184	+327	+224
ACC%	72%	65%	83%	83%	84%	83%	83%	81%	78%	82%	54%	74%	73%	73%	74%	67%	76%	80%				

Full flush brother to T52 in this sale. Very docile and carrying some special carcass traits. Top 9% for EMA and top 18% for IMF. Suitable for heifers.

Purchaser..... Price.....

**6 HAZELDEAN T475 (AI) SV APR AMFU NHFU CAFU DDFU** Born: 30/07/2022 Society Id: NHZ22T475

G A R PROPHET  
 BALDRIDGE BEAST MODE B074  
 BALDRIDGE ISABEL Y69  
**Sire: HAZELDEAN REPRIMAND R303**  
 HAZELDEAN F1023  
 HAZELDEAN N334  
 HAZELDEAN L352

RENNYLEA EDMUND E11  
 HAZELDEAN KATZEN K416  
 HAZELDEAN H342  
**Dam: HAZELDEAN N746**  
 MATAURI REALITY 839  
 HAZELDEAN K775  
 HAZELDEAN D986

Front	Rear	Front	Rear	Front	Rear	MUSCLE	TEMP.	SHEATH
6	5	5	6	6	5	C+	1.5	4

Structural EBV's			
TACE	ANGLE	CLAW	LEGS
	+0.74	+0.78	0.8
ACC%	64%	64%	61%

TRANSTASMAN ANGUS CATTLE EVALUATION - FEBRUARY 2024																						
TACE	CALVING EASE				GROWTH & MATERNAL				FERTILITY		CWT	CARCASE					Doc	Angus Index	Dom	Heavy Grain	Heavy Grass	
	DIR	DTRS	GL	B Wt	200	400	600	MWt	Milk	SS	DC	C Wt	EMA	RIB	RUMP	RBV%	IMF%	Doc.				
EBV	+6.8	+4.3	-5.2	+2.6	+63	+105	+142	+126	+14	+3.2	-5.5	+83	+8.7	-0.2	-2.1	+0.7	+3.4	+37	+258	+207	+339	+245
ACC%	65%	54%	83%	81%	82%	80%	81%	77%	72%	79%	41%	69%	68%	67%	69%	59%	73%	76%				

Long type with genuine softness - a great outlook, super docile and some very handy breeding values to go with a type!

Purchaser..... Price.....

**Top 5%** **Top 10%** **Top 30%**  
 Ranking in Angus Aust. February 2024

## Proven Genetic Performance



# Autumn 2024



# Sale Bulls

**7 HAZELDEAN T245 (AI) PV APR AMFU NHFU CAFU DD50%** Born: 23/07/2022 Society Id: NHZ22T245

HAZELDEAN JAIPUR J140  
HAZELDEAN MAGNUM M586  
HAZELDEAN H356  
Sire: HAZELDEAN Q319  
HAZELDEAN JALANA J1510  
HAZELDEAN L1175  
HAZELDEAN H1603

TE MANIA EMPEROR E343  
STORTH OAKS JACK J7  
STORTH OAKS G183  
Dam: HAZELDEAN Q427  
SITZ JACKSON 431T  
HAZELDEAN J796  
HAZELDEAN G840

Front	Rear	Front	Rear	Front	Rear	MUSCLE	TEMP.	SHEATH
6	5	6	7	5	6	C+	1	4

Structural EBV's			
TACE	ANGLE	CLAW	LEGS
	+1.06	+0.74	0.78
ACC%	59%	60%	56%

TRANSTASMAN ANGUS CATTLE EVALUATION - FEBRUARY 2024																							
TACE	CALVING EASE				GROWTH & MATERNAL				FERTILITY		CWT	CARCASE					Doc	Angus Index	Dom	Heavy Grain	Heavy Grass		
	DIR	DTRS	GL	B Wt	200	400	600	MWt	Milk	SS	DC	C Wt	EMA	RIB	RUMP	RBV%	IMF%	Doc.					
EBV	+5.3	+8	-8.1	+2.7	+58	+111	+149	+133	+19	+3.3	-9.9	+81	+4.3	+2.5	+0.2	-1	+3.8	+46	+261	+218	+330	+254	
ACC%	65%	54%	84%	82%	83%	81%	81%	78%	73%	80%	42%	71%	69%	69%	71%	61%	74%	77%					

A very impressive type to look at with all the paperwork to match. Very good quality! This bull nearly ticks every box for a commercial beef producer. Top 1% for days to calving and docility. Top 7% for calving ease daughters and 400d growth. Suitable for heifers.

Purchaser..... Price.....

**8 HAZELDEAN T406 (AI) SV APR AMFU NHFU CAFU DDFU** Born: 29/07/2022 Society Id: NHZ22T406

G A R PROPHET  
BALDRIDGE BEAST MODE B074  
BALDRIDGE ISABEL Y69  
Sire: CLUNIE RANGE PLANTATION P392  
THOMAS UP RIVER 1614  
CLUNIE RANGE NAOMI M516  
CLUNIE RANGE NAOMI H5

LAWSONS TANK X1235(AI) VLYX1235  
LAWSONS TANK VLY B1155  
LAWSONS NEW DESIGN 1407 Z1393  
Dam: HAZELDEAN J1516  
IRONWOOD NEW LEVEL  
HAZELDEAN A736  
HAZELDEAN W1001

Front	Rear	Front	Rear	Front	Rear	MUSCLE	TEMP.	SHEATH
6	5	6	7	6	6	C+	1.5	3

Structural EBV's			
TACE	ANGLE	CLAW	LEGS
	+0.98	+0.9	1.02
ACC%	72%	72%	68%

TRANSTASMAN ANGUS CATTLE EVALUATION - FEBRUARY 2024																							
TACE	CALVING EASE				GROWTH & MATERNAL				FERTILITY		CWT	CARCASE					Doc	Angus Index	Dom	Heavy Grain	Heavy Grass		
	DIR	DTRS	GL	B Wt	200	400	600	MWt	Milk	SS	DC	C Wt	EMA	RIB	RUMP	RBV%	IMF%	Doc.					
EBV	+1.1	-5.2	-6.1	+3.8	+63	+112	+141	+106	+20	+5.8	-3.1	+73	+2.2	-1.4	-1.2	-0.8	+2.6	+13	+191	+157	+265	+175	
ACC%	67%	56%	83%	82%	83%	81%	81%	77%	73%	79%	44%	72%	71%	71%	72%	62%	75%	76%					

Real thickness in a young sire boasting top 7% for 200d and 400d growth. Top 1% for scrotal size. Suitable for heifers.

Purchaser..... Price.....

**9 HAZELDEAN T430 (AI) PV APR AMFU NHFU CA2% DDFU** Born: 29/07/2022 Society Id: NHZ22T430

H P C A INTENSITY  
RENNYLEA NORL519  
RENNYLEA H414  
Sire: HAZELDEAN RONALDO R1561  
G A R PROPHET  
HAZELDEAN J115  
HAZELDEAN A243

HAZELDEAN JAIPUR J140  
HAZELDEAN MAGNUM M586  
HAZELDEAN H356  
Dam: HAZELDEAN Q478  
DUNOON EVIDENT E614  
HAZELDEAN H945  
HAZELDEAN BANDO B578

Front	Rear	Front	Rear	Front	Rear	MUSCLE	TEMP.	SHEATH
6	5	5	6	5	5	C+	1	3

Structural EBV's			
TACE	ANGLE	CLAW	LEGS
	+0.98	+0.86	1.12
ACC%	66%	66%	64%

TRANSTASMAN ANGUS CATTLE EVALUATION - FEBRUARY 2024																							
TACE	CALVING EASE				GROWTH & MATERNAL				FERTILITY		CWT	CARCASE					Doc	Angus Index	Dom	Heavy Grain	Heavy Grass		
	DIR	DTRS	GL	B Wt	200	400	600	MWt	Milk	SS	DC	C Wt	EMA	RIB	RUMP	RBV%	IMF%	Doc.					
EBV	+2.2	+5.1	-8.3	+4.4	+61	+106	+145	+142	+17	+2.5	-8.3	+88	+2.5	-3.9	-3.2	+0.7	+2.6	+25	+242	+204	+301	+230	
ACC%	63%	53%	83%	81%	82%	80%	80%	76%	71%	78%	42%	69%	68%	67%	69%	58%	73%	75%					

A powerful carcase bull with industry leading days to calving and gestation length. Top 8% for 600d growth. Better than breed average for IMF and milk EBVs. Suitable for heifers.

Purchaser..... Price.....

**Top 5%**    **Top 10%**    **Top 30%**  
Ranking in Angus Aust. February 2024

# Autumn 2024



# Sale Bulls

**10 HAZELDEAN T39 (ET) PV APR AMFU NHFU CAFU DDFU** Born: 20/07/2022 Society Id: NHZ22T39

G A R PROPHET  
BALDRIDGE BEAST MODE B074  
BALDRIDGE ISABEL Y69  
Sire: HAZELDEAN P16  
LAWSONS INVINCIBLE C402  
HAZELDEAN G90  
HAZELDEAN B4

BT RIGHT TIME 24J  
RENNYLEA NORF42  
RENNYLEA B36  
Dam: HAZELDEAN J644  
TE MANIA BERKLEY B1  
HAZELDEAN F386  
HAZELDEAN Y1053

Front	Rear	Front	Rear	Front	Rear	MUSCLE	TEMP.	SHEATH
6	5	6	7	6	6	C+	1	4

Structural EBV's			
TACE	ANGLE	CLAW	LEGS
	+0.84	+0.54	0.96
ACC%	71%	70%	68%

TRANSTASMAN ANGUS CATTLE EVALUATION - FEBRUARY 2024																							
TACE	CALVING EASE				GROWTH & MATERNAL				FERTILITY		CWT	CARCASE					Doc	Angus Index	Dom	Heavy Grain	Heavy Grass		
	DIR	DTRS	GL	B Wt	200	400	600	MWt	Milk	SS	DC	C Wt	EMA	RIB	RUMP	RBV%	IMF%	Doc.					
EBV	+6.3	+3	-8.7	+2.7	+60	+113	+150	+136	+12	+3.4	-5.1	+87	+2.8	+1.4	+2.7	+0.1	-0.2	+23	+212	+183	+266	+199	
ACC%	67%	57%	82%	82%	83%	82%	82%	79%	74%	80%	44%	71%	69%	70%	70%	62%	73%	78%					

Lots of natural weight - longer type. A real curve bender, very impressive birth to growth. Top 5% of breed for 600d and very good carcass weight. Suitable for heifers.

Purchaser..... Price.....

**11 HAZELDEAN T52 (ET) PV APR AMFU NHFU CAFU DDFU** Born: 21/07/2022 Society Id: NHZ22T52

G A R INGENUITY  
H P C A INTENSITY  
G A R PREDESTINED 287L  
Sire: RENNYLEA NORL519  
TE MANIA BERKLEY B1  
RENNYLEA H414  
RENNYLEA C310

C R A BEXTOR 872 5205 608  
G A R PROPHET  
G A R OBJECTIVE 1885  
Dam: HAZELDEAN J823  
HAZELDEAN CARDRONA C677  
HAZELDEAN G724

Front	Rear	Front	Rear	Front	Rear	MUSCLE	TEMP.	SHEATH
6	5	5	5	5	6	C+	1.5	4

Structural EBV's			
TACE	ANGLE	CLAW	LEGS
	+0.48	+0.7	0.9
ACC%	74%	75%	72%

TRANSTASMAN ANGUS CATTLE EVALUATION - FEBRUARY 2024																							
TACE	CALVING EASE				GROWTH & MATERNAL				FERTILITY		CWT	CARCASE					Doc	Angus Index	Dom	Heavy Grain	Heavy Grass		
	DIR	DTRS	GL	B Wt	200	400	600	MWt	Milk	SS	DC	C Wt	EMA	RIB	RUMP	RBV%	IMF%	Doc.					
EBV	+1.4	+5.5	-5.7	+4.7	+66	+115	+152	+129	+17	+1.2	-3.7	+94	+5.5	-2.2	-1.9	+0.1	+3.8	+38	+246	+196	+335	+229	
ACC%	72%	65%	83%	84%	85%	83%	83%	81%	78%	82%	54%	75%	74%	73%	74%	68%	77%	81%					

Flushed from the very special cow in J823, very handy structural scores along with a data set to make your eyes water. Suitable for heifers.

Purchaser..... Price.....

**12 HAZELDEAN T476 (AI) PV APR AMFU NHFU CAFU DDFU** Born: 30/07/2022 Society Id: NHZ22T476

A A R TEN X 7008 S A  
V A R DISCOVERY 2240  
DEER VALLEY RITA 0308  
Sire: LANDFALL NEW GROUND TFAN90  
MATAURI REALITY 839  
LANDFALL ELSA L88  
LANDFALL ELSA J139

HAZELDEAN JAIPUR J140  
HAZELDEAN LAIKIN L885  
G443  
Dam: HAZELDEAN N786  
JINDRA DOUBLE VISION 16748826  
HAZELDEAN L532  
HAZELDEAN F658

Front	Rear	Front	Rear	Front	Rear	MUSCLE	TEMP.	SHEATH
6	5	5	6	6	5	C+	1.5	4

Structural EBV's			
TACE	ANGLE	CLAW	LEGS
	+0.8	+0.68	0.8
ACC%	69%	69%	67%

TRANSTASMAN ANGUS CATTLE EVALUATION - FEBRUARY 2024																							
TACE	CALVING EASE				GROWTH & MATERNAL				FERTILITY		CWT	CARCASE					Doc	Angus Index	Dom	Heavy Grain	Heavy Grass		
	DIR	DTRS	GL	B Wt	200	400	600	MWt	Milk	SS	DC	C Wt	EMA	RIB	RUMP	RBV%	IMF%	Doc.					
EBV	+3.7	+2.9	-3	+3.4	+42	+87	+115	+85	+22	+3.4	-4.3	+63	+9.7	+2.3	+4.1	+0.2	+3.9	+20	+222	+174	+299	+213	
ACC%	68%	59%	83%	81%	82%	81%	81%	78%	74%	79%	44%	70%	69%	69%	70%	62%	73%	76%					

More moderate frame wrapped up in a easy doing package - soft skin type. New Ground has bred well and looks to be impressive. Both EMA and IMF are in the top 20% of the breed. Suitable for heifers.

Purchaser.....

**Charity BULL!**

Top 5%    Top 10%    Top 30%

Ranking in Angus Aust. February 2024

**Proven Genetic Performance**



# Autumn 2024



# Sale Bulls

**13 HAZELDEAN T509 (AI) SV APR AMFU NHFU CAFU DDFU** Born: 31/07/2022 Society Id: NHZ22T509

RENNYLEA EDMUND E11 S A V FINAL ANSWER 0035  
 RENNYLEA KODAK K522 S A V THUNDERBIRD 9061  
 RENNYLEA EISA ERICA F810 S A V EMBLYNETTE 7411  
**Sire: MURRAY KODAK N70** **Dam: HAZELDEAN K773**  
 GARDENS WAVE LEACHMAN BOOM TIME  
 MURRAY WAVE J53 HAZELDEAN BOOMTIME D726  
 TE MANIA QUEANBEYAN D113 HAZELDEAN B857

Front	Rear	Front	Rear	Front	Rear	MUSCLE	TEMP.	SHEATH
6	5	5	6	5	5	C+		4

Structural EBV's			
TACE	ANGLE	CLAW	LEGS
	+1.04	+1.36	1
ACC%	68%	68%	65%

TRANSTASMAN ANGUS CATTLE EVALUATION - FEBRUARY 2024																						
TACE	CALVING EASE				GROWTH & MATERNAL				FERTILITY		CWT	CARCASE					Doc	Angus Index	Dom	Heavy Grain	Heavy Grass	
	DIR	DTRS	GL	B Wt	200	400	600	MWt	Milk	SS	DC	C Wt	EMA	RIB	RUMP	RBV%	IMF%	Doc.				
EBV	+2.7	-1.9	-5.4	+2.7	+50	+91	+116	+135	+10	+3.5	-5.9	+60	+6.9	-2.4	-3.1	+0.8	+3.2	+8	+185	+159	+240	+171
ACC%	67%	57%	84%	83%	83%	82%	82%	79%	74%	80%	48%	74%	73%	72%	73%	64%	77%	78%				

Moves around well and has an attractive set of calving ease and fertility traits. Suitable for heifers.

Purchaser..... Price.....

**14 HAZELDEAN T514 (AI) SV APR AMFU NHFU CAFU DDFU** Born: 31/07/2022 Society Id: NHZ22T514

RENNYLEA EDMUND E11 SCHURRTOP REALITY X723  
 RENNYLEA KODAK K522 MATAURI REALITY 839  
 RENNYLEA EISA ERICA F810 MATAURI 06663  
**Sire: MURRAY KODAK N70** **Dam: HAZELDEAN K1630**  
 GARDENS WAVE RENNYLEA C574  
 MURRAY WAVE J53 HAZELDEAN H1604  
 TE MANIA QUEANBEYAN D113 HAZELDEAN BOOMTIME F1006

Front	Rear	Front	Rear	Front	Rear	MUSCLE	TEMP.	SHEATH
7	7	6	6	5	6	C+	2.5	4

Structural EBV's			
TACE	ANGLE	CLAW	LEGS
	+0.98	+1.12	1
ACC%	67%	67%	65%

TRANSTASMAN ANGUS CATTLE EVALUATION - FEBRUARY 2024																						
TACE	CALVING EASE				GROWTH & MATERNAL				FERTILITY		CWT	CARCASE					Doc	Angus Index	Dom	Heavy Grain	Heavy Grass	
	DIR	DTRS	GL	B Wt	200	400	600	MWt	Milk	SS	DC	C Wt	EMA	RIB	RUMP	RBV%	IMF%	Doc.				
EBV	+1.7	+3.9	-8.3	+3.7	+61	+103	+136	+127	+16	+3.7	-6	+81	+4.3	+0.2	-1.2	+0.1	+2.3	+15	+218	+181	+283	+203
ACC%	68%	59%	84%	83%	84%	82%	82%	79%	75%	81%	49%	74%	73%	73%	74%	65%	78%	79%				

Great outlook with a very attractive birth to growth spread.

Purchaser..... Price.....

**15 HAZELDEAN T568 (AI) PV APR AMFU NHFU CAFU DDFU** Born: 31/07/2022 Society Id: NHZ22T568

HAZELDEAN JAIPUR J140 MATAURI REALITY 839  
 HAZELDEAN MAGNUM M586 KAROO KNOCKOUT K176  
 HAZELDEAN H356 KAROO JEDDA H213  
**Sire: HAZELDEAN Q319** **Dam: HAZELDEAN Q1114**  
 HAZELDEAN JALANA J1510 HAZELDEAN HALYARD H506  
 HAZELDEAN L1175 HAZELDEAN K399  
 HAZELDEAN H1603 G40

Front	Rear	Front	Rear	Front	Rear	MUSCLE	TEMP.	SHEATH
6	5	5	6	6	6	C+	2.5	4

Structural EBV's			
TACE	ANGLE	CLAW	LEGS
	+1.12	+0.98	1.18
ACC%	63%	64%	60%

TRANSTASMAN ANGUS CATTLE EVALUATION - FEBRUARY 2024																						
TACE	CALVING EASE				GROWTH & MATERNAL				FERTILITY		CWT	CARCASE					Doc	Angus Index	Dom	Heavy Grain	Heavy Grass	
	DIR	DTRS	GL	B Wt	200	400	600	MWt	Milk	SS	DC	C Wt	EMA	RIB	RUMP	RBV%	IMF%	Doc.				
EBV	+6.2	+10.7	-9.8	+2.5	+51	+102	+128	+132	+17	+2.7	-8.4	+70	+0.4	+1.5	+0.1	+0.2	+2	+20	+223	+203	+272	+210
ACC%	64%	53%	83%	82%	83%	81%	81%	78%	73%	79%	42%	70%	69%	69%	70%	60%	74%	77%				

Truck loads of calving ease with real thickness to look at. Top 1% for calving ease daughters and days to calving. Suitable for heifers.

Purchaser..... Price.....

**Top 5%** **Top 10%** **Top 30%**

Ranking in Angus Aust. February 2024

## Proven Genetic Performance

# Autumn 2024



# Sale Bulls

**16 HAZELDEAN T672 (AI) PV APR AMFU NHFU CAFU DDFU** Born: **01/08/2022**  
 Society Id: **NHZ22T672**

H P C A INTENSITY  
 RENNYLEA NORL519  
 RENNYLEA H414  
**Sire: HAZELDEAN RAMROD R1581**  
 G A R PROPHET  
 HAZELDEAN J115  
 HAZELDEAN A243

HAZELDEAN JAIPUR J140  
 HAZELDEAN MAGNUM M586  
 HAZELDEAN H356  
**Dam: HAZELDEAN Q845**  
 HAZELDEAN KIGALI K176  
 HAZELDEAN M1050  
 HAZELDEAN G968

Front	Rear	Front	Rear	Front	Rear	MUSCLE	TEMP.	SHEATH
5	5	5	6	5	6	C+	2	4

Structural EBV's			
TACE	ANGLE	CLAW	LEGS
	<b>+1.04</b>	<b>+0.6</b>	<b>1.18</b>
ACC%	61%	63%	60%

TRANSTASMAN ANGUS CATTLE EVALUATION - FEBRUARY 2024																							
TACE	CALVING EASE				GROWTH & MATERNAL				FERTILITY		CWT	CARCASE					Doc	Angus Index	Dom	Heavy Grain	Heavy Grass		
	DIR	DTRS	GL	B Wt	200	400	600	MWt	Milk	SS	DC	C Wt	EMA	RIB	RUMP	RBV%	IMF%	Doc.					
<b>EBV</b>	-1.1	<b>+7.3</b>	<b>-7</b>	<b>+4.8</b>	<b>+57</b>	<b>+95</b>	<b>+124</b>	<b>+106</b>	<b>+18</b>	<b>+3.4</b>	<b>-6.7</b>	<b>+73</b>	<b>+5.2</b>	<b>+1.9</b>	<b>+0.4</b>	<b>-0.2</b>	<b>+2.8</b>	<b>+14</b>	<b>+222</b>	<b>+183</b>	<b>+291</b>	<b>+207</b>	
<b>ACC%</b>	64%	55%	84%	82%	83%	81%	81%	77%	72%	79%	43%	70%	69%	69%	70%	60%	74%	77%					

This young bull ticks so many boxes with ample calving ease and lots of fertility. Suitable for heifers.

Purchaser..... Price.....

**17 HAZELDEAN T719 (AI) SV APR AMFU NHFU CA2% DDFU** Born: **02/08/2022**  
 Society Id: **NHZ22T719**

ARDROSSAN EQUATOR A241  
 HAZELDEAN JAIPUR J140  
 HAZELDEAN C33  
**Sire: HAZELDEAN Q1237**  
 CARABAR DOCKLANDS D62  
 HAZELDEAN J447  
 HAZELDEAN D684

CONNELLY CONSENSUS 7229  
 CONNELLY COMRADE 1385  
 HAPPY GEE OF CONANGA 919  
**Dam: HAZELDEAN N570**  
 DUNOON EVIDENT E614  
 HAZELDEAN H945  
 HAZELDEAN BANDO B578

Front	Rear	Front	Rear	Front	Rear	MUSCLE	TEMP.	SHEATH
6	5	6	6	6	5	C+	1.5	4

Structural EBV's			
TACE	ANGLE	CLAW	LEGS
	<b>+0.9</b>	<b>+0.56</b>	<b>1.18</b>
ACC%	64%	64%	59%

TRANSTASMAN ANGUS CATTLE EVALUATION - FEBRUARY 2024																							
TACE	CALVING EASE				GROWTH & MATERNAL				FERTILITY		CWT	CARCASE					Doc	Angus Index	Dom	Heavy Grain	Heavy Grass		
	DIR	DTRS	GL	B Wt	200	400	600	MWt	Milk	SS	DC	C Wt	EMA	RIB	RUMP	RBV%	IMF%	Doc.					
<b>EBV</b>	<b>+7.5</b>	<b>+5.2</b>	<b>-3.7</b>	<b>+4.2</b>	<b>+43</b>	<b>+89</b>	<b>+119</b>	<b>+88</b>	<b>+29</b>	<b>+3.8</b>	<b>-7.4</b>	<b>+77</b>	<b>+8.6</b>	<b>-1.6</b>	<b>-0.8</b>	<b>+0.9</b>	<b>+1.5</b>	<b>+31</b>	<b>+222</b>	<b>+189</b>	<b>+271</b>	<b>+214</b>	
<b>ACC%</b>	65%	55%	84%	82%	83%	81%	81%	78%	73%	80%	44%	71%	69%	69%	71%	61%	74%	77%					

Balanced type with all the commercially relevant traits covered. Top 9% for calving ease direct, top 6% for days to calving and very good scrotal size. Suitable for heifers.

Purchaser..... Price.....

**18 HAZELDEAN T780 (AI) SV APR AMFU NHFU CAFU DDFU** Born: **03/08/2022**  
 Society Id: **NHZ22T780**

RENNYLEA EDMUND E11  
 RENNYLEA KODAK K522  
 RENNYLEA EISA ERICA F810  
**Sire: MURRAY KODAK N70**  
 GARDENS WAVE  
 MURRAY WAVE J53  
 TE MANIA QUEANBEYAN D113

ARDROSSAN EQUATOR A241  
 HAZELDEAN JAIPUR J140  
 HAZELDEAN C33  
**Dam: HAZELDEAN M1286**  
 RENNYLEA NORF42  
 HAZELDEAN J524  
 HAZELDEAN F436

Front	Rear	Front	Rear	Front	Rear	MUSCLE	TEMP.	SHEATH
6	5	5	6	6	5	C+	1	4

Structural EBV's			
TACE	ANGLE	CLAW	LEGS
	-	-	
ACC%	-	-	%

TRANSTASMAN ANGUS CATTLE EVALUATION - FEBRUARY 2024																							
TACE	CALVING EASE				GROWTH & MATERNAL				FERTILITY		CWT	CARCASE					Doc	Angus Index	Dom	Heavy Grain	Heavy Grass		
	DIR	DTRS	GL	B Wt	200	400	600	MWt	Milk	SS	DC	C Wt	EMA	RIB	RUMP	RBV%	IMF%	Doc.					
<b>EBV</b>	<b>-0.9</b>	<b>+4.8</b>	<b>-4.9</b>	<b>+4.9</b>	<b>+57</b>	<b>+100</b>	<b>+133</b>	<b>+119</b>	<b>+19</b>	<b>+5</b>	<b>-5.7</b>	<b>+82</b>	<b>+8.4</b>	<b>-0.9</b>	<b>-0.9</b>	<b>+1</b>	<b>+2.1</b>	<b>+27</b>	<b>+223</b>	<b>+186</b>	<b>+284</b>	<b>+212</b>	
<b>ACC%</b>	60%	50%	83%	75%	72%	72%	70%	68%	62%	76%	44%	65%	65%	66%	66%	59%	69%	68%					

Very sound footed young sire with a versatile set of breeding values. Very usable for both cows and heifers. Out of a J140 cow, we really like these types. Suitable for heifers.

Purchaser..... Price.....

**Top 5%**   **Top 10%**   **Top 30%**  
 Ranking in Angus Aust. February 2024

## Proven Genetic Performance



# Autumn 2024



# Sale Bulls

**19 HAZELDEAN T800 (AI) PV APR AMFU NHFU CAFU DDFU** Born: 03/08/2022 Society Id: NHZ22T800

HAZELDEAN JAIPUR J140  
 HAZELDEAN MAGNUM M586  
 HAZELDEAN H356  
**Sire: HAZELDEAN Q319**  
 HAZELDEAN JALANA J1510  
 HAZELDEAN L1175  
 HAZELDEAN H1603

KOUPALS B&B IDENTITY  
 HAZELDEAN N202  
 HAZELDEAN L1297  
**Dam: HAZELDEAN Q1444**  
 HAZELDEAN JEZEBEL J484  
 HAZELDEAN L802  
 HAZELDEAN D773

Front	Rear	Front	Rear	Front	Rear	MUSCLE	TEMP.	SHEATH
6	5	5	6	5	6	C+	2	5

Structural EBV's			
TACE	ANGLE	CLAW	LEGS
	+0.72	+0.76	0.8
ACC%	61%	63%	57%

TRANSTASMAN ANGUS CATTLE EVALUATION - FEBRUARY 2024																						
TACE	CALVING EASE				GROWTH & MATERNAL				FERTILITY		CWT	CARCASE					Doc	Angus Index	Dom	Heavy Grain	Heavy Grass	
	DIR	DTRS	GL	B Wt	200	400	600	MWt	Milk	SS	DC	C Wt	EMA	RIB	RUMP	RBV%	IMF%	Doc.				
EBV	+7.5	+4	-7.9	+2	+47	+95	+118	+118	+18	+1.9	-7.8	+71	+6.3	+1.5	-0.6	+0.3	+3.1	+30	+223	+195	+284	+208
ACC%	62%	50%	83%	81%	82%	80%	80%	77%	71%	78%	39%	68%	67%	67%	68%	57%	72%	75%				

Awesome Hazeldean Q319 son with all the commercial beef breeding traits our clients like. Ample calving ease and top 15 % for docility. Suitable for heifers.

Purchaser..... Price.....

**20 HAZELDEAN T1212 (AI) SV APR AMFU NHFU CAFU DDFU** Born: 24/08/2022 Society Id: NHZ22T1212

G A R PROPHET  
 BALDRIDGE BEAST MODE B074  
 BALDRIDGE ISABEL Y69  
**Sire: HAZELDEAN REPRIMAND R303**  
 HAZELDEAN F1023  
 HAZELDEAN N334  
 HAZELDEAN L352

RENNYLEA EDMUND E11  
 HAZELDEAN KATZEN K416  
 HAZELDEAN H342  
**Dam: HAZELDEAN N441**  
 TE MANIA AFRICA A217  
 G443  
 HAZELDEAN E390

Front	Rear	Front	Rear	Front	Rear	MUSCLE	TEMP.	SHEATH
6	5	5	5	6	5	C+	1.5	4

Structural EBV's			
TACE	ANGLE	CLAW	LEGS
	+0.76	+0.78	0.84
ACC%	63%	63%	61%

TRANSTASMAN ANGUS CATTLE EVALUATION - FEBRUARY 2024																						
TACE	CALVING EASE				GROWTH & MATERNAL				FERTILITY		CWT	CARCASE					Doc	Angus Index	Dom	Heavy Grain	Heavy Grass	
	DIR	DTRS	GL	B Wt	200	400	600	MWt	Milk	SS	DC	C Wt	EMA	RIB	RUMP	RBV%	IMF%	Doc.				
EBV	+9.4	+4.7	-9.5	+1	+50	+93	+123	+108	+18	+2.4	-6.3	+67	+3.1	+1.4	-1.6	-0.5	+5.2	+40	+222	+176	+298	+209
ACC%	66%	56%	83%	82%	83%	81%	81%	78%	73%	79%	43%	71%	69%	69%	70%	60%	74%	77%				

Great shape wrapped up in a functional sound bull. Plenty of calving ease and very good IMF. Suitable for heifers.

Purchaser..... Price.....

**21 HAZELDEAN T258 (AI) SV APR AMFU NHFU CAFU DDFU** Born: 24/07/2022 Society Id: NHZ22T258

H P C A INTENSITY  
 RENNYLEA NORL519  
 RENNYLEA H414  
**Sire: HAZELDEAN RONALDO R1561**  
 G A R PROPHET  
 HAZELDEAN J115  
 HAZELDEAN A243

SCHURRTOP REALITY X723  
 MATAURI REALITY 839  
 MATAURI 06663  
**Dam: HAZELDEAN N272**  
 RENNYLEA EDMUND E11  
 HAZELDEAN K452  
 HAZELDEAN H1001

Front	Rear	Front	Rear	Front	Rear	MUSCLE	TEMP.	SHEATH
6	6	6	6	5	5	C+	2	4

Structural EBV's			
TACE	ANGLE	CLAW	LEGS
	+0.68	+0.46	1.1
ACC%	66%	66%	64%

TRANSTASMAN ANGUS CATTLE EVALUATION - FEBRUARY 2024																						
TACE	CALVING EASE				GROWTH & MATERNAL				FERTILITY		CWT	CARCASE					Doc	Angus Index	Dom	Heavy Grain	Heavy Grass	
	DIR	DTRS	GL	B Wt	200	400	600	MWt	Milk	SS	DC	C Wt	EMA	RIB	RUMP	RBV%	IMF%	Doc.				
EBV	+3.1	+7.3	-9.6	+4.3	+46	+82	+110	+103	+13	+3	-5.4	+50	+6.3	-0.5	-0.6	+0.5	+3.4	+12	+202	+164	+260	+189
ACC%	65%	56%	83%	82%	83%	81%	81%	77%	73%	79%	45%	70%	69%	68%	70%	60%	73%	76%				

Very deep bull a real eye catcher in the pen amongst his mates. Balanced EBVs to match. Note white at the base of testes.

Purchaser..... Price.....

**Top 5%    Top 10%    Top 30%**  
 Ranking in Angus Aust. February 2024

## Proven Genetic Performance

# Autumn 2024



# Sale Bulls

**22 HAZELDEAN T282 (AI) SV HBR** Born: 25/07/2022  
 AMFU NHFU CAFU DDFU Society Id: NHZ22T282

G A R PROPHET ARDROSSAN EQUATOR A241  
 TE MANIA KIRBY K138 HAZELDEAN JAIPUR J140  
 TE MANIA H17 HAZELDEAN C33  
**Sire: TE MANIA QARARA Q514** **Dam: HAZELDEAN M100**  
 TE MANIA JOE J963 DUNOON GOTHIC BHRG531  
 TE MANIA BARUNAH L537 HAZELDEAN K175  
 TE MANIA BARUNAH H219 HAZELDEAN F96

Front	Rear	Front	Rear	MUSCLE	TEMP.	SHEATH		
7	6	6	7	6	5	C+	1	4

Structural EBV's			
TACE	ANGLE	CLAW	LEGS
	+1.02	+0.64	1.2
ACC%	67%	67%	66%

TRANSTASMAN ANGUS CATTLE EVALUATION - FEBRUARY 2024																							
TACE	CALVING EASE				GROWTH & MATERNAL				FERTILITY		CWT	CARCASE					Doc	Angus Index	Dom	Heavy Grain	Heavy Grass		
	DIR	DTRS	GL	B Wt	200	400	600	MWt	Milk	SS	DC	C Wt	EMA	RIB	RUMP	RBV%	IMF%	Doc.					
EBV	+7.8	+5.6	-10.5	+3	+49	+79	+100	+85	+22	+4.1	-8.9	+55	+4.5	+0.1	-0.3	-0.2	+3.6	+28	+231	+193	+298	+216	
ACC%	65%	54%	83%	82%	83%	81%	81%	78%	73%	80%	44%	71%	70%	70%	71%	62%	75%	78%					

A good frame with plenty of top. Heaps of calving ease - top 8% for calving ease direct. Top 20\$ for IMF. Suitable for heifers.

Purchaser..... Price.....

**23 HAZELDEAN T437 (AI) PV APR** Born: 29/07/2022  
 AMFU NHFU CAFU DDFU Society Id: NHZ22T437

G A R INGENUITY ARDROSSAN EQUATOR A241  
 H P C A INTENSITY HAZELDEAN JAIPUR J140  
 G A R PREDESTINED 287L HAZELDEAN C33  
**Sire: RENNYLEA NATIONWIDE N432** **Dam: HAZELDEAN Q1157**  
 TE MANIA BERKLEY B1 HAZELDEAN HALYARD H506  
 RENNYLEA H367 HAZELDEAN K399  
 RENNYLEA F228 G40

Front	Rear	Front	Rear	MUSCLE	TEMP.	SHEATH		
6	6	5	6	4	5	C+	1	4

Structural EBV's			
TACE	ANGLE	CLAW	LEGS
	+0.88	+0.66	1
ACC%	67%	66%	65%

TRANSTASMAN ANGUS CATTLE EVALUATION - FEBRUARY 2024																							
TACE	CALVING EASE				GROWTH & MATERNAL				FERTILITY		CWT	CARCASE					Doc	Angus Index	Dom	Heavy Grain	Heavy Grass		
	DIR	DTRS	GL	B Wt	200	400	600	MWt	Milk	SS	DC	C Wt	EMA	RIB	RUMP	RBV%	IMF%	Doc.					
EBV	+5.2	+8.5	-6.9	+3.1	+58	+102	+150	+124	+26	+1	-0.2	+104	+6.2	-2.3	-4.4	+1.4	+0.5	+27	+182	+134	+241	+165	
ACC%	65%	56%	83%	81%	83%	81%	81%	78%	74%	79%	46%	71%	70%	70%	71%	63%	75%	77%					

Punchy, powerful type. Very impressive birth to growth - top 5% for 600d growth and top 1% for carcass weight. Getting from birth up to selling weight quickly is a key profit driver in a cow and calf operation. Suitable for heifers.

Purchaser..... Price.....

**24 HAZELDEAN T443 (AI) SV APR** Born: 30/07/2022  
 AMFU NHFU CAFU DDFU Society Id: NHZ22T443

S S OBJECTIVE T510 0T26 LEACHMAN BOOM TIME  
 G A R TWINHEARTS 8418 HAZELDEAN BOOMTIME D931  
 G A R YIELD GRADE 2015 HAZELDEAN W832  
**Sire: CONNAMARA P64** **Dam: HAZELDEAN G693**  
 TOPBOS AMBASSADOR F4 L T 598 BANDO 9074  
 CONNAMARA HAZELDEAN A138  
 CONNAMARA G24 HAZELDEAN S4

Front	Rear	Front	Rear	MUSCLE	TEMP.	SHEATH		
7	5	6	6	5	5	C+	1	4

Structural EBV's			
TACE	ANGLE	CLAW	LEGS
	+1.12	+0.7	1.06
ACC%	65%	64%	61%

TRANSTASMAN ANGUS CATTLE EVALUATION - FEBRUARY 2024																							
TACE	CALVING EASE				GROWTH & MATERNAL				FERTILITY		CWT	CARCASE					Doc	Angus Index	Dom	Heavy Grain	Heavy Grass		
	DIR	DTRS	GL	B Wt	200	400	600	MWt	Milk	SS	DC	C Wt	EMA	RIB	RUMP	RBV%	IMF%	Doc.					
EBV	-1.1	+3.2	-5	+5.7	+58	+98	+132	+117	+20	+3.5	-5.8	+68	+3	-2.6	-2.8	+0.6	+2.6	+20	+209	+173	+269	+195	
ACC%	65%	54%	84%	82%	83%	81%	81%	78%	73%	79%	42%	70%	69%	69%	70%	61%	73%	77%					

Powerful type with depth and style. Top 22% for 600d growth and days to calving EBV. Top 12% for scrotal size. Better than breed average for IMF and docility EBV.

Purchaser..... Price.....

**Top 5%** **Top 10%** **Top 30%**  
 Ranking in Angus Aust. February 2024

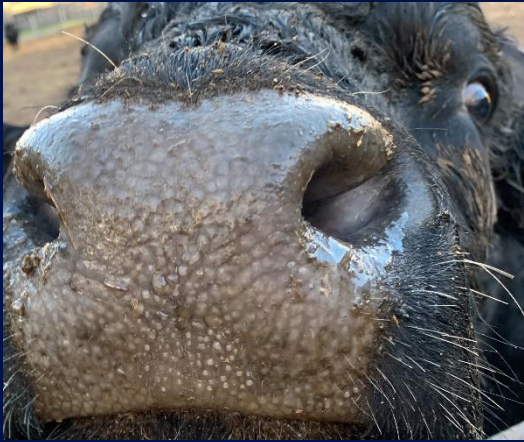
**Proven Genetic Performance**

www.hazeldean.com.au





HAZELDEAN  
LITCHFIELD  
EST 1865







HAZELDEAN  
LITCHFIELD  
EST 1865





# Autumn 2024



# Sale Bulls

**25 HAZELDEAN T456 (AI) SV APR AMFU NHFU CAFU DDFU** Born: 30/07/2022 Society Id: NHZ22T456

G A R MOMENTUM USA17354145 LT 598 BANDO 9074  
 LAWSONS MOMENTOUS M518 HAZELDEAN DELIVER D211 (AI)  
 LAWSONS AFRICA H229 VLYH229 HAZELDEAN Z187  
**Sire: MURDEDUKE QUARTERBACK Q011** **Dam: HAZELDEAN H896**  
 CARABAR DOCKLANDS D62 HAZELDEAN CATALYST C28 (AI) (ET)  
 MURDEDUKE BARUNDAH N026 HAZELDEAN E529  
 MURDEDUKE BARUNAH C191 HAZELDEAN B998

Front	Rear	Front	Rear	Front	Rear	MUSCLE	TEMP.	SHEATH
7	6	7	7	5	5	C+	1	5

Structural EBV's			
TACE	ANGLE	CLAW	LEGS
	+1.02	+0.8	1.04
ACC%	70%	70%	68%

TRANSTASMAN ANGUS CATTLE EVALUATION - FEBRUARY 2024																							
TACE	CALVING EASE				GROWTH & MATERNAL				FERTILITY		CWT	CARCASE					Doc	Angus Index	Dom	Heavy Grain	Heavy Grass		
	DIR	DTRS	GL	B Wt	200	400	600	MWt	Milk	SS	DC	C Wt	EMA	RIB	RUMP	RBV%	IMF%	Doc.					
EBV	+7	+8.8	-7	+2.6	+48	+86	+115	+84	+28	+1.8	-6.4	+80	+2.1	+2.8	+3.6	-1.3	+4.4	+39	+226	+174	+309	+212	
ACC%	68%	58%	83%	82%	83%	82%	82%	78%	73%	80%	45%	72%	71%	71%	72%	62%	75%	78%					

Quarterback sons have been pleasing - a big future here. Lots of calving easy and fertility. Very positive fats for those looking to improve there. Top 9% for IMF. Suitable for heifers.

Purchaser..... Price.....

**26 HAZELDEAN T516 (AI) SV APR AMFU NHFU CAFU DDFU** Born: 31/07/2022 Society Id: NHZ22T516

TE MANIA BERKLEY B1 KAROO W109 DIRECTION Z181  
 HAZELDEAN F1023 CARABAR DOCKLANDS D62  
 HAZELDEAN B723 CARABAR BLACKCAP MARY B12  
**Sire: HAZELDEAN Q1229** **Dam: HAZELDEAN L310**  
 G A R PROPHET LAWSONS INVINCIBLE C402  
 HAZELDEAN J823 HAZELDEAN J401  
 HAZELDEAN G724 HAZELDEAN BOOMTIME E435

Front	Rear	Front	Rear	Front	Rear	MUSCLE	TEMP.	SHEATH
6	6	6	6	5	5	C+	2	4

Structural EBV's			
TACE	ANGLE	CLAW	LEGS
	+1.08	+0.98	1.14
ACC%	67%	67%	65%

TRANSTASMAN ANGUS CATTLE EVALUATION - FEBRUARY 2024																							
TACE	CALVING EASE				GROWTH & MATERNAL				FERTILITY		CWT	CARCASE					Doc	Angus Index	Dom	Heavy Grain	Heavy Grass		
	DIR	DTRS	GL	B Wt	200	400	600	MWt	Milk	SS	DC	C Wt	EMA	RIB	RUMP	RBV%	IMF%	Doc.					
EBV	+8.4	+6.9	-9	+1.4	+43	+80	+106	+67	+24	+4.3	-4.9	+50	+4.2	-0.2	-1.2	+0.3	+3.7	+17	+210	+168	+275	+197	
ACC%	65%	55%	83%	82%	83%	81%	81%	77%	73%	79%	44%	70%	69%	68%	70%	60%	73%	77%					

Athletic type - he moves very well. Top 5% for calving ease direct. Industry leading scrotal size. Suitable for heifers. Note: a little white in flank.

Purchaser..... Price.....

**27 HAZELDEAN T528 (AI) PV APR AMFU NHFU CAFU DDFU** Born: 31/07/2022 Society Id: NHZ22T528

HAZELDEAN JAIPUR J140 CARABAR DOCKLANDS D62  
 HAZELDEAN MAGNUM M586 HAZELDEAN KHMER K150  
 HAZELDEAN H356 HAZELDEAN E74  
**Sire: HAZELDEAN Q319** **Dam: HAZELDEAN M987**  
 HAZELDEAN JALANA J1510 HAZELDEAN CARDRONA C677  
 HAZELDEAN L1175 HAZELDEAN G952  
 HAZELDEAN H1603 HAZELDEAN D234

Front	Rear	Front	Rear	Front	Rear	MUSCLE	TEMP.	SHEATH
7	6	7	6	5	5	C	1	5

Structural EBV's			
TACE	ANGLE	CLAW	LEGS
	+1.12	+0.92	1
ACC%	61%	63%	59%

TRANSTASMAN ANGUS CATTLE EVALUATION - FEBRUARY 2024																							
TACE	CALVING EASE				GROWTH & MATERNAL				FERTILITY		CWT	CARCASE					Doc	Angus Index	Dom	Heavy Grain	Heavy Grass		
	DIR	DTRS	GL	B Wt	200	400	600	MWt	Milk	SS	DC	C Wt	EMA	RIB	RUMP	RBV%	IMF%	Doc.					
EBV	+7.3	+8.1	-5.6	+3.1	+40	+77	+106	+112	+16	+1.8	-8.6	+57	+4.9	+1.9	+1.6	+0.2	+2.6	+21	+203	+170	+250	+193	
ACC%	64%	52%	84%	82%	83%	81%	81%	77%	72%	79%	42%	70%	69%	69%	70%	59%	74%	77%					

Good frame shape with plenty of scope. Top 10% for calving ease direct and top 2% for days to calving. Better than breed average for IMF.

Purchaser..... Price.....

**Top 5%** **Top 10%** **Top 30%**  
 Ranking in Angus Aust. February 2024

## Proven Genetic Performance

# Autumn 2024



# Sale Bulls

**28 HAZELDEAN T535 (AI) # APR AMFU NHFU CAFU DDFU** Born: 31/07/2022 Society Id: NHZ22T535

G A R PROPHET SYDGEN BLACK PEARL 2006  
 BALDRIDGE BEAST MODE B074 HAZELDEAN LEBANON L332  
 BALDRIDGE ISABEL Y69 H341  
**Sire: HAZELDEAN POWER UP R274** **Dam: HAZELDEAN N871**  
 KM BROKEN BOW 002 CARABAR DOCKLANDS D62  
 HAZELDEAN K97 HAZELDEAN J187  
 HAZELDEAN F103 HAZELDEAN D12

Front	Rear	Front	Rear	Front	Rear	MUSCLE	TEMP.	SHEATH
6	6	5	5	5	5	c+	1	4

Structural EBV's			
TACE	ANGLE	CLAW	LEGS
	-	-	
ACC%	-	-	%

TRANSTASMAN ANGUS CATTLE EVALUATION - FEBRUARY 2024																							
TACE	CALVING EASE				GROWTH & MATERNAL				FERTILITY		CWT	CARCASE					Doc	Angus Index	Dom	Heavy Grain	Heavy Grass		
	DIR	DTRS	GL	B Wt	200	400	600	MWt	Milk	SS	DC	C Wt	EMA	RIB	RUMP	RBV%	IMF%	Doc.					
EBV	+2.2	+5.2	-8.2	+2.9	+60	+103	+137	+123	+19	+3.3	-2.9	+69	+5.6	+0.4	0	-0.3	+3.3	+9	+206	+159	+287	+189	
ACC%	57%	48%	65%	73%	70%	70%	67%	65%	58%	74%	37%	59%	56%	58%	58%	51%	61%	64%					

The whole package here sired by the sale topping bull in Hazeldean Power Up R274. Power up is at Paringa Angus now doing a great job. Curve bending birth to growth and top 25% for IMF. Top 12% for 200d growth. Suitable for heifers.

Purchaser..... Price.....

**29 HAZELDEAN T563 (AI) PV APR AMFU NHFU CAFU DDFU** Born: 31/07/2022 Society Id: NHZ22T563

G A R INGENUITY HAZELDEAN KIBBITZ K553  
 H P C A INTENSITY HAZELDEAN N770  
 G A R PREDESTINED 287L HAZELDEAN K312  
**Sire: RENNYLEA NATIONWIDE N432** **Dam: HAZELDEAN Q925**  
 TE MANIA BERKLEY B1 BASIN PAYWEIGHT 1682 USA17038724  
 RENNYLEA H367 HAZELDEAN M719  
 RENNYLEA F228 HAZELDEAN G385

Front	Rear	Front	Rear	Front	Rear	MUSCLE	TEMP.	SHEATH
6	6	5	6	4	5	C+	1	4

Structural EBV's			
TACE	ANGLE	CLAW	LEGS
	+0.6	+0.42	0.88
ACC%	65%	65%	64%

TRANSTASMAN ANGUS CATTLE EVALUATION - FEBRUARY 2024																							
TACE	CALVING EASE				GROWTH & MATERNAL				FERTILITY		CWT	CARCASE					Doc	Angus Index	Dom	Heavy Grain	Heavy Grass		
	DIR	DTRS	GL	B Wt	200	400	600	MWt	Milk	SS	DC	C Wt	EMA	RIB	RUMP	RBV%	IMF%	Doc.					
EBV	-0.5	+7.7	-7.3	+5.8	+57	+91	+118	+126	+11	+2.2	-5.9	+69	+2.2	-2.7	-3.8	+0.4	+2.1	+9	+183	+157	+234	+164	
ACC%	63%	54%	82%	81%	82%	80%	81%	77%	73%	79%	42%	69%	69%	68%	70%	60%	73%	75%					

Deep and capacious. Genuine softness with plenty of bone, he stands up well.

Purchaser..... Price.....

**30 HAZELDEAN T632 (AI) SV APR AMFU NHFU CAFU DDFU** Born: 01/08/2022 Society Id: NHZ22T632

ARDROSSAN EQUATOR A241 TE MANIA YORKSHIRE Y437  
 HAZELDEAN JAIPUR J140 TE MANIA BERKLEY B1  
 HAZELDEAN C33 TE MANIA LOWAN Z53  
**Sire: HAZELDEAN Q1237** **Dam: HAZELDEAN K406**  
 CARABAR DOCKLANDS D62 G A R PROPHET  
 HAZELDEAN J447 HAZELDEAN H561  
 HAZELDEAN D684 HAZELDEAN B677

Front	Rear	Front	Rear	Front	Rear	MUSCLE	TEMP.	SHEATH
6	6	5	5	5	5	c+	1	3

Structural EBV's			
TACE	ANGLE	CLAW	LEGS
	+0.78	+0.68	0.86
ACC%	66%	66%	64%

TRANSTASMAN ANGUS CATTLE EVALUATION - FEBRUARY 2024																							
TACE	CALVING EASE				GROWTH & MATERNAL				FERTILITY		CWT	CARCASE					Doc	Angus Index	Dom	Heavy Grain	Heavy Grass		
	DIR	DTRS	GL	B Wt	200	400	600	MWt	Milk	SS	DC	C Wt	EMA	RIB	RUMP	RBV%	IMF%	Doc.					
EBV	+5.3	+7.2	-6.1	+5.4	+57	+97	+127	+106	+14	+3.5	-5.8	+67	+8.6	-1.5	-3.5	+1.4	+1.4	+32	+238	+204	+296	+224	
ACC%	65%	56%	83%	82%	83%	81%	81%	78%	73%	80%	46%	71%	70%	70%	71%	61%	75%	77%					

Big bodied bull with thickness and good capacity. Top 12% for both scrotal size and docility EBVs. Note: a small bit of white at the base of testes.

Purchaser..... Price.....

**Top 5%** **Top 10%** **Top 30%**

Ranking in Angus Aust. February 2024

## Proven Genetic Performance

# Autumn 2024



# Sale Bulls

**31 HAZELDEAN T707 (A) SV APR AMFU NHFU CAFU DDFU** Born: 02/08/2022 Society Id: NHZ22T707

ARDROSSAN EQUATOR A241 BOOROOMOOKA UNDERTAKEN Y145  
 HAZELDEAN JAIPUR J140 RENNYLEA EDMUND E11  
 HAZELDEAN C33 LAWSONS HENRY VIII Y5  
**Sire: HAZELDEAN Q1237 Dam: HAZELDEAN L2010**  
 CARABAR DOCKLANDS D62  
 HAZELDEAN J447 HAZELDEAN J3022  
 HAZELDEAN D684

Front	Rear	Front	Rear	Front	Rear	MUSCLE	TEMP.	SHEATH
5	6	5	7	5	5	C+	1	3

Structural EBV's			
TACE	ANGLE	CLAW	LEGS
	+1.22	+0.56	1.34
ACC%	64%	64%	60%

TRANSTASMAN ANGUS CATTLE EVALUATION - FEBRUARY 2024																						
TACE	CALVING EASE				GROWTH & MATERNAL					FERTILITY		CWT	CARCASE					Doc	Angus Index	Dom	Heavy Grain	Heavy Grass
	DIR	DTRS	GL	B Wt	200	400	600	MWt	Milk	SS	DC	C Wt	EMA	RIB	RUMP	RBY%	IMF%	Doc.				
EBV	+3	+3.1	-3	+4.5	+53	+95	+120	+75	+18	+3.4	-6.3	+89	+9.3	+0.6	+3.2	+0.6	+1.6	+34	+258	+219	+329	+244
ACC%	63%	53%	84%	81%	81%	80%	79%	76%	71%	78%	43%	69%	67%	68%	68%	60%	72%	75%				

Lots of volume heavy boned type with very good feet. Stand out EMA.

Purchaser..... Price.....

**32 HAZELDEAN T1040 (A) SV APR AMFU NHFU CAFU DDFU** Born: 07/08/2022 Society Id: NHZ22T1040

ARDROSSAN EQUATOR A241 SITZ NEW DESIGN 458N  
 HAZELDEAN JAIPUR J140 SITZ JACKSON 431T  
 HAZELDEAN C33 SITZ EPPIONIA 105P  
**Sire: HAZELDEAN Q1237 Dam: HAZELDEAN J778**  
 CARABAR DOCKLANDS D62 ARDROSSAN EQUATOR A241  
 HAZELDEAN J447 HAZELDEAN G841  
 HAZELDEAN D684 HAZELDEAN B1447

Front	Rear	Front	Rear	Front	Rear	MUSCLE	TEMP.	SHEATH
6	6	6	6	5	5	C+	2	3

Structural EBV's			
TACE	ANGLE	CLAW	LEGS
	+1.06	+0.82	1.16
ACC%	63%	63%	59%

TRANSTASMAN ANGUS CATTLE EVALUATION - FEBRUARY 2024																						
TACE	CALVING EASE				GROWTH & MATERNAL					FERTILITY		CWT	CARCASE					Doc	Angus Index	Dom	Heavy Grain	Heavy Grass
	DIR	DTRS	GL	B Wt	200	400	600	MWt	Milk	SS	DC	C Wt	EMA	RIB	RUMP	RBY%	IMF%	Doc.				
EBV	-0.1	+4.7	+2.9	+5.8	+53	+95	+142	+124	+25	+4.7	-4.9	+79	+7.8	-2.6	-2.2	+0.8	+2.5	+35	+199	+150	+253	+193
ACC%	66%	56%	84%	83%	84%	82%	82%	78%	74%	80%	45%	72%	70%	70%	71%	62%	75%	78%				

Very good pair of testes! Lots of fertility and the EBV's back it up! Very good 600d growth for a cow joining here.

Purchaser..... Price.....

**33 HAZELDEAN T1954 (Nat) PV APR AMFU NHFU CAFU DDFU** Born: 22/08/2022 Society Id: NHZ22T1954

RENNYLEA C511 TE MANIA BERKLEY B1  
 RENNYLEA NORH708 HAZELDEAN F1023  
 RENNYLEA E176 HAZELDEAN B723  
**Sire: HAZELDEAN R23 Dam: HAZELDEAN Q328**  
 HAZELDEAN L1301 HAZELDEAN KARPOV K733  
 HAZELDEAN N1301 HAZELDEAN M1012  
 HAZELDEAN L416 HAZELDEAN F457

Front	Rear	Front	Rear	Front	Rear	MUSCLE	TEMP.	SHEATH
7	6	6	6	5	5	C+	1	3

Structural EBV's			
TACE	ANGLE	CLAW	LEGS
	+0.86	+0.64	0.84
ACC%	64%	64%	63%

TRANSTASMAN ANGUS CATTLE EVALUATION - FEBRUARY 2024																						
TACE	CALVING EASE				GROWTH & MATERNAL					FERTILITY		CWT	CARCASE					Doc	Angus Index	Dom	Heavy Grain	Heavy Grass
	DIR	DTRS	GL	B Wt	200	400	600	MWt	Milk	SS	DC	C Wt	EMA	RIB	RUMP	RBY%	IMF%	Doc.				
EBV	+5.6	+3.3	-1.2	+3.5	+44	+89	+111	+84	+17	+4.3	-6	+50	+10.7	+3.2	+1.5	+1	+2.6	+24	+237	+203	+300	+227
ACC%	63%	53%	81%	80%	81%	79%	79%	76%	71%	77%	42%	69%	68%	68%	69%	59%	73%	74%				

Long bodied grandson of F1023 - looks just like F1023. Top 4% for scrotal size and Rib fat. Top 11% for EMA and good calving ease. Suitable for heifers.

Purchaser..... Price.....

**Top 5%    Top 10%    Top 30%**

Ranking in Angus Aust. February 2024

# Autumn 2024



# Sale Bulls

**34 HAZELDEAN T2086 (Nat) SV APR** AMFU NHFU CAFU DDFU Born: 25/08/2022 Society Id: NHZ22T2086

KOUPALS B&B IDENTITY  
HAZELDEAN P94  
HAZELDEAN H36  
Sire: HAZELDEAN R556  
HAZELDEAN LUTYENS L708  
HAZELDEAN N1329  
HAZELDEAN H321

BASIN FRANCHISE P142  
EF COMPLEMENT 8088  
EF EVERELDA ENTENSE 6117  
Dam: HAZELDEAN P372  
HAZELDEAN KATZEN K416  
HAZELDEAN M576  
HAZELDEAN J415

Front	Rear	Front	Rear	Front	Rear	MUSCLE	TEMP.	SHEATH
7	6	7	6	5	5	C+	1	3

Structural EBV's			
TACE	ANGLE	CLAW	LEGS
	+1.06	+0.66	1.2
ACC%	66%	66%	61%

TRANSTASMAN ANGUS CATTLE EVALUATION - FEBRUARY 2024																							
TACE	CALVING EASE				GROWTH & MATERNAL					FERTILITY		CWT	CARCASE					Doc	Angus Index	Dom	Heavy Grain	Heavy Grass	
	DIR	DTRS	GL	B Wt	200	400	600	MWt	Milk	SS	DC	C Wt	EMA	RIB	RUMP	RBY%	IMF%	Doc.					
EBV	+2.6	+4	-4	+3.5	+55	+101	+139	+124	+21	+1.8	-2.4	+91	+4.2	-0.7	-1.2	+0.2	+2	+26	+181	+140	+244	+164	
ACC%	63%	53%	81%	81%	82%	80%	80%	77%	72%	78%	41%	69%	68%	67%	69%	58%	73%	75%					

VERY GOOD QUALITY is the yard sheet comment. Easy doing with softness. Very docile bull. Curve bending birth to growth.

Purchaser..... Price.....

**35 HAZELDEAN T767 (AI) SV APR** AMFU NHFU CAFU DDFU Born: 03/08/2022 Society Id: NHZ22T767

ARDROSSAN EQUATOR A241  
HAZELDEAN JAIPUR J140  
HAZELDEAN C33  
Sire: HAZELDEAN Q1237  
CARABAR DOCKLANDS D62  
HAZELDEAN J447  
HAZELDEAN D684

BOOROOMOOKA UNDERTAKEN Y145  
RENNYLEA EDMUND E11  
LAWSONS HENRY VIII Y5  
Dam: HAZELDEAN K1606  
WK REPLAY USA16154968  
HAZELDEAN G1679  
HAZELDEAN E701

Front	Rear	Front	Rear	Front	Rear	MUSCLE	TEMP.	SHEATH
6	5	6	6	5	6	c+	1	4

Structural EBV's			
TACE	ANGLE	CLAW	LEGS
	+0.86	+0.38	0.92
ACC%	64%	65%	61%

TRANSTASMAN ANGUS CATTLE EVALUATION - FEBRUARY 2024																							
TACE	CALVING EASE				GROWTH & MATERNAL					FERTILITY		CWT	CARCASE					Doc	Angus Index	Dom	Heavy Grain	Heavy Grass	
	DIR	DTRS	GL	B Wt	200	400	600	MWt	Milk	SS	DC	C Wt	EMA	RIB	RUMP	RBY%	IMF%	Doc.					
EBV	+4.1	+2.1	-5.2	+4.9	+41	+64	+93	+70	+14	+3	-6.1	+55	+6	+1	+0.7	-0.2	+4.5	+41	+198	+147	+261	+186	
ACC%	65%	56%	83%	82%	83%	81%	81%	78%	73%	80%	46%	71%	70%	69%	71%	61%	74%	77%					

Thick type in a moderate frame and moderate mature cow weight. Top 3% for docility EBVs and top 8% for IMF.

Purchaser..... Price.....

**36 HAZELDEAN T804 (AI) PV APR** AMFU NHFU CAFU DDFU Born: 03/08/2022 Society Id: NHZ22T804

RENNYLEA EDMUND E11  
RENNYLEA KODAK K522  
RENNYLEA EISA ERICA F810  
Sire: MURRAY KODAK N70  
GARDENS WAVE  
MURRAY WAVE J53  
TE MANIA QUEANBEYAN D113

ARDROSSAN EQUATOR A241  
HAZELDEAN KAYKO K790  
HAZELDEAN B520  
Dam: HAZELDEAN Q1768  
S A V THUNDERBIRD 9061  
HAZELDEAN K776  
HAZELDEAN E568

Front	Rear	Front	Rear	Front	Rear	MUSCLE	TEMP.	SHEATH
6	6	6	6	4	5	c+	2	5

Structural EBV's			
TACE	ANGLE	CLAW	LEGS
	+0.7	+0.8	0.82
ACC%	69%	69%	67%

TRANSTASMAN ANGUS CATTLE EVALUATION - FEBRUARY 2024																							
TACE	CALVING EASE				GROWTH & MATERNAL					FERTILITY		CWT	CARCASE					Doc	Angus Index	Dom	Heavy Grain	Heavy Grass	
	DIR	DTRS	GL	B Wt	200	400	600	MWt	Milk	SS	DC	C Wt	EMA	RIB	RUMP	RBY%	IMF%	Doc.					
EBV	+1.7	+6.1	-4.8	+1.7	+45	+79	+95	+79	+9	+3.6	-7	+57	+12.7	+1.5	0	+1.6	+2.1	+12	+237	+208	+297	+223	
ACC%	64%	53%	83%	81%	82%	80%	80%	76%	72%	78%	44%	71%	70%	70%	71%	61%	75%	75%					

Really sound footed bull with top 4% EMA. Very good days to calving.

Purchaser..... Price.....

Top 5%    Top 10%    Top 30%

Ranking in Angus Aust. February 2024

Proven Genetic Performance

www.hazeldean.com.au



# Autumn 2024



# Sale Bulls

**37 HAZELDEAN T815 (AI) SV APR AMFU NHFU CAFU DDFU** Born: **04/08/2022**  
 Society Id: **NH22T815**

H P C A INTENSITY  
 RENNYLEA NORL519  
 RENNYLEA H414  
**Sire: HAZELDEAN RONALDO R1561**  
 G A R PROPHET  
 HAZELDEAN J115  
 HAZELDEAN A243

TE MANIA ULONG U41  
 TE MANIA AFRICA A217  
 TE MANIA JEDDA Y32  
**Dam: HAZELDEAN G334**  
 HAZELDEAN THEO Y1282  
 HAZELDEAN THEO B1250  
 HAZELDEAN V799

Front	Rear	Front	Rear	Front	Rear	MUSCLE	TEMP.	SHEATH
7	6	6	6	5	5	C+	2	4

Structural EBV's			
TACE	ANGLE	CLAW	LEGS
	<b>+0.9</b>	<b>+0.82</b>	<b>1.02</b>
ACC%	64%	64%	63%

TRANSTASMAN ANGUS CATTLE EVALUATION - FEBRUARY 2024																							
TACE	CALVING EASE				GROWTH & MATERNAL				FERTILITY		CWT	CARCASE					Doc	Angus Index	Dom	Heavy Grain	Heavy Grass		
	DIR	DTRS	GL	B Wt	200	400	600	MWt	Milk	SS	DC	C Wt	EMA	RIB	RUMP	RYBY%	IMF%	Doc.					
EBV	-8.9	-3.1	-5.1	+5.4	+55	+98	+122	+116	+12	+0.8	-4	+64	+8.5	-0.8	-0.9	+0.6	+4	+19	+196	+158	+274	+177	
ACC%	66%	58%	83%	82%	83%	81%	81%	78%	74%	79%	47%	71%	70%	69%	71%	61%	74%	77%					

Ample volume with a good birth to growth spread. Top 14% for IMF.

Purchaser..... Price.....

**38 HAZELDEAN T1099 (AI) PV HBR AMFU NHFU CAFU DDFU** Born: **08/08/2022**  
 Society Id: **NH22T1099**

G A R PROPHET  
 BALDRIDGE BEAST MODE B074  
 BALDRIDGE ISABEL Y69  
**Sire: HAZELDEAN POWER UP R274**  
 KM BROKEN BOW 002  
 HAZELDEAN K97  
 HAZELDEAN F103

TUWHARETOA REGENT D145  
 RENNYLEA NORJ474  
 RENNYLEA C310  
**Dam: HAZELDEAN Q36**  
 RITO 9M25 OF RITA 5F56 PRED  
 HAZELDEAN J174  
 HAZELDEAN E77

Front	Rear	Front	Rear	Front	Rear	MUSCLE	TEMP.	SHEATH
7	6	7	6	5	5	C+	1	4

Structural EBV's			
TACE	ANGLE	CLAW	LEGS
	<b>+0.54</b>	<b>+0.64</b>	<b>0.68</b>
ACC%	66%	66%	64%

TRANSTASMAN ANGUS CATTLE EVALUATION - FEBRUARY 2024																							
TACE	CALVING EASE				GROWTH & MATERNAL				FERTILITY		CWT	CARCASE					Doc	Angus Index	Dom	Heavy Grain	Heavy Grass		
	DIR	DTRS	GL	B Wt	200	400	600	MWt	Milk	SS	DC	C Wt	EMA	RIB	RUMP	RYBY%	IMF%	Doc.					
EBV	+2.1	+3.9	-2.2	+2.7	+51	+85	+116	+103	+22	+4.7	-3.9	+63	+9.7	-1.5	-2.9	+1.2	+2.7	+17	+197	+155	+261	+183	
ACC%	63%	53%	81%	80%	81%	79%	80%	76%	71%	78%	40%	68%	66%	66%	68%	58%	72%	75%					

A Power Up son with plenty of calving ease as well as plenty of thickness. Good barrel just like his sale topping dad. Suitable for heifers.

Purchaser..... Price.....

**39 HAZELDEAN T1119 (AI) SV APR AMFU NHFU CAFU DDFU** Born: **09/08/2022**  
 Society Id: **NH22T1119**

ARDROSSAN EQUATOR A241  
 HAZELDEAN JAIPUR J140  
 HAZELDEAN C33  
**Sire: HAZELDEAN Q1237**  
 CARABAR DOCKLANDS D62  
 HAZELDEAN J447  
 HAZELDEAN D684

TE MANIA BERKLEY B1  
 HAZELDEAN F1023  
 HAZELDEAN B723  
**Dam: HAZELDEAN P778**  
 HAZELDEAN HOBNAIL H360  
 HAZELDEAN K1702  
 HAZELDEAN G352

Front	Rear	Front	Rear	Front	Rear	MUSCLE	TEMP.	SHEATH
6	6	6	6	4	5	C+	1	4

Structural EBV's			
TACE	ANGLE	CLAW	LEGS
	<b>+0.7</b>	<b>+0.32</b>	<b>0.88</b>
ACC%	67%	67%	63%

TRANSTASMAN ANGUS CATTLE EVALUATION - FEBRUARY 2024																							
TACE	CALVING EASE				GROWTH & MATERNAL				FERTILITY		CWT	CARCASE					Doc	Angus Index	Dom	Heavy Grain	Heavy Grass		
	DIR	DTRS	GL	B Wt	200	400	600	MWt	Milk	SS	DC	C Wt	EMA	RIB	RUMP	RYBY%	IMF%	Doc.					
EBV	-1.1	+5.1	+1.4	+4.2	+43	+83	+112	+89	+21	+5	-7.9	+67	+7.8	+0.9	+2	+0.2	+3.8	+19	+223	+181	+283	+217	
ACC%	64%	54%	83%	82%	83%	81%	81%	77%	72%	79%	43%	70%	68%	68%	69%	60%	73%	77%					

A more moderate frame size with lower mature cow weight. Top 2% for scrotal size and very good fats. Suitable for heifers.

Purchaser..... Price.....

**Top 5%**    **Top 10%**    **Top 30%**

Ranking in Angus Aust. February 2024

## Proven Genetic Performance

# Autumn 2024



# Sale Bulls

**40 HAZELDEAN T1145 (AI) PV HBR** Born: 10/08/2022  
 AMFU NHFU CAFU DDFU Society Id: NH222T1145

RENNYLEA EDMUND E11 LD CAPITALIST 316  
 RENNYLEA KODAK K522 MUSGRAVE 316 STUNNER USA18467508  
 RENNYLEA EISA ERICA F810 MCATL BLACKBIRD 831-1378  
**Sire: MURRAY KODAK N70** Dam: HAZELDEAN Q94  
 GARDENS WAVE RENNYLEA EDMUND E11  
 MURRAY WAVE J53 HAZELDEAN N12  
 TE MANIA QUEANBEYAN D113 HAZELDEAN K8

Front	Rear	Front	Rear	Front	Rear	MUSCLE	TEMP.	SHEATH
6	6	6	6	5	5	C+	1	3

Structural EBV's			
TACE	ANGLE	CLAW	LEGS
	+0.86	+0.82	0.92
ACC%	69%	69%	66%

TRANSTASMAN ANGUS CATTLE EVALUATION - FEBRUARY 2024																						
TACE	CALVING EASE				GROWTH & MATERNAL				FERTILITY		CWT	CARCASE					Doc	Angus Index	Dom	Heavy Grain	Heavy Grass	
	DIR	DTRS	GL	B Wt	200	400	600	MWt	Milk	SS	DC	C Wt	EMA	RIB	RUMP	RBV%	IMF%	Doc.				
EBV	+3.8	+7.8	-7	+3.3	+56	+106	+134	+130	+8	+3.2	-8.2	+85	+2.9	+1.4	+0.9	-0.1	+2.3	+36	+238	+211	+296	+227
ACC%	66%	56%	83%	82%	83%	81%	81%	78%	73%	79%	46%	73%	72%	72%	73%	63%	76%	77%				

Longer type - he stands over a lot of ground. Really well balanced. Top 3% for days to calving, top 7% for calving ease daughters and docility EBV. High indexing commercial relevance. Suitable for heifers.

Purchaser..... Price.....

**41 HAZELDEAN T1855 (Nat) SV APR** Born: 17/08/2022  
 AMFU NHFU CAFU DDFU Society Id: NH222T1855

MATAURI REALITY 839 RENNYLEA EDMUND E11  
 GLENOCH-JK MAKAHU QLLM602 ARDROSSAN JUSTICE NAQJ93  
 GLENOCH-JK ANN K615 ARDROSSAN EVERELDA AI(ET) NAQF6  
**Sire: HAZELDEAN R248** Dam: HAZELDEAN N56  
 TE MANIA YORKSHIRE Y437 TE MANIA YORKSHIRE Y437  
 HAZELDEAN G1038 HAZELDEAN G21  
 HAZELDEAN E314 HAZELDEAN B301

Front	Rear	Front	Rear	Front	Rear	MUSCLE	TEMP.	SHEATH
6	6	6	6	5	5	C+	2	3

Structural EBV's			
TACE	ANGLE	CLAW	LEGS
	+0.94	+0.56	1.14
ACC%	61%	61%	59%

TRANSTASMAN ANGUS CATTLE EVALUATION - FEBRUARY 2024																						
TACE	CALVING EASE				GROWTH & MATERNAL				FERTILITY		CWT	CARCASE					Doc	Angus Index	Dom	Heavy Grain	Heavy Grass	
	DIR	DTRS	GL	B Wt	200	400	600	MWt	Milk	SS	DC	C Wt	EMA	RIB	RUMP	RBV%	IMF%	Doc.				
EBV	+5.1	+0.8	-6.5	+4.2	+51	+92	+127	+97	+24	+2.4	-5	+68	-1	-0.4	-2.5	-0.7	+5.1	+15	+203	+154	+275	+189
ACC%	65%	55%	82%	82%	83%	81%	81%	78%	73%	79%	42%	70%	69%	69%	70%	59%	74%	76%				

Square back end with plenty of IMF! It can be hard to find good IMF bulls with an attractive rump end. Suitable for heifers.

Purchaser..... Price.....

**42 HAZELDEAN T1870 (Nat) SV APR** Born: 18/08/2022  
 AMFU NHFU CAFU DDFU Society Id: NH222T1870

HAZELDEAN JAIPUR J140 BON VIEW NEW DESIGN 208  
 HAZELDEAN M182 TC TOTAL 410  
 HAZELDEAN K807 TC ERICA EILEEN 2047  
**Sire: HAZELDEAN R5** Dam: HAZELDEAN H3  
 MAR INNOVATION 251 USA16983331 L T 598 BANDO 9074  
 HAZELDEAN N436 HAZELDEAN A90  
 HAZELDEAN G519 HAZELDEAN Y310

Front	Rear	Front	Rear	Front	Rear	MUSCLE	TEMP.	SHEATH
7	6	7	6	5	5	c+	1	4

Structural EBV's			
TACE	ANGLE	CLAW	LEGS
	+0.8	+0.56	1
ACC%	65%	65%	61%

TRANSTASMAN ANGUS CATTLE EVALUATION - FEBRUARY 2024																						
TACE	CALVING EASE				GROWTH & MATERNAL				FERTILITY		CWT	CARCASE					Doc	Angus Index	Dom	Heavy Grain	Heavy Grass	
	DIR	DTRS	GL	B Wt	200	400	600	MWt	Milk	SS	DC	C Wt	EMA	RIB	RUMP	RBV%	IMF%	Doc.				
EBV	+1.6	+7.6	-5	+3.7	+46	+100	+137	+142	+16	+1.6	-3	+67	+5.1	+1.8	+1	-0.2	+3.2	+48	+168	+131	+225	+157
ACC%	64%	54%	81%	81%	82%	80%	81%	77%	73%	78%	43%	70%	69%	69%	70%	60%	74%	75%				

Heavy set type with lots of punchy growth. Suitable for heifers.

Purchaser..... Price.....

**Top 5%** **Top 10%** **Top 30%**

Ranking in Angus Aust. February 2024

## Proven Genetic Performance

# Autumn 2024



# Sale Bulls

**43 HAZELDEAN T1956 (Nat) PV APR AMFU NHFU CAFU DDFU** Born: 22/08/2022 Society Id: NH22T1956

ARDROSSAN EQUATOR A241  
HAZELDEAN JAIPUR J140  
HAZELDEAN C33  
Sire: HAZELDEAN Q1237  
CARABAR DOCKLANDS D62  
HAZELDEAN J447  
HAZELDEAN D684

TE MANIA BERKLEY B1  
HAZELDEAN F1023  
HAZELDEAN B723  
Dam: HAZELDEAN Q357  
CARABAR DOCKLANDS D62  
HAZELDEAN M697  
HAZELDEAN H308

Front	Rear	Front	Rear	Front	Rear	MUSCLE	TEMP.	SHEATH
6	6	6	6	5	5	C+	1	3

Structural EBV's			
TACE	ANGLE	CLAW	LEGS
	+1.06	+0.86	1.08
ACC%	64%	64%	61%

TRANSTASMAN ANGUS CATTLE EVALUATION - FEBRUARY 2024																							
TACE	CALVING EASE				GROWTH & MATERNAL				FERTILITY		CWT	CARCASE					Doc	Angus Index	Dom	Heavy Grain	Heavy Grass		
	DIR	DTRS	GL	B Wt	200	400	600	MWt	Milk	SS	DC	C Wt	EMA	RIB	RUMP	RBY%	IMF%	Doc.					
EBV	+9	+9.6	-3.6	+1.4	+43	+83	+106	+54	+25	+4	-7.6	+63	+17.2	+1.1	+2.1	+1.5	+2.2	+30	+285	+240	+360	+277	
ACC%	64%	54%	83%	82%	83%	81%	81%	78%	72%	79%	44%	70%	69%	69%	70%	61%	74%	77%					

Sleep all night calving ease here - top 3% for calving ease direct. Industry leading indexes. Top 1% for EMA and top 5% for days to calving. Top 6% for retail beef yield. Suitable for heifers.

Purchaser..... Price.....

**44 HAZELDEAN T2090 (Nat) SV APR AMFU NHFU CA25% DDFU** Born: 25/08/2022 Society Id: NH22T2090

MATAURI REALITY 839  
GLENOC-HK MAKAHU QLLM602  
GLENOC-HK ANN K615  
Sire: HAZELDEAN R361  
MILLWILLAH COMPLEMENT NJWK108  
HAZELDEAN N124  
HAZELDEAN L1284

TUWHARETOA REGENT D145  
RENNYLEA NORJ474  
RENNYLEA C310  
Dam: HAZELDEAN Q593  
TE MANIA BERKLEY B1  
HAZELDEAN H473  
HAZELDEAN X656

Front	Rear	Front	Rear	Front	Rear	MUSCLE	TEMP.	SHEATH
7	6	6	6	5	6	c+	2	3

Structural EBV's			
TACE	ANGLE	CLAW	LEGS
	+0.96	+0.82	1.06
ACC%	61%	61%	59%

TRANSTASMAN ANGUS CATTLE EVALUATION - FEBRUARY 2024																							
TACE	CALVING EASE				GROWTH & MATERNAL				FERTILITY		CWT	CARCASE					Doc	Angus Index	Dom	Heavy Grain	Heavy Grass		
	DIR	DTRS	GL	B Wt	200	400	600	MWt	Milk	SS	DC	C Wt	EMA	RIB	RUMP	RBY%	IMF%	Doc.					
EBV	-10	+1.5	-3.2	+6.9	+53	+94	+129	+124	+14	+1.4	-5.3	+84	+8.1	-0.6	-0.3	+1	+1.2	+18	+173	+141	+223	+160	
ACC%	63%	53%	81%	80%	82%	80%	80%	77%	72%	78%	40%	68%	68%	67%	69%	58%	73%	75%					

A tidy type with good square stature. Punchy growth for your cows and bit carcass weight EBV.

Purchaser..... Price.....

**45 HAZELDEAN T2140 (Nat) PV APR AMFU NHFU CAFU DDFU** Born: 26/08/2022 Society Id: NH22T2140

ARDROSSAN EQUATOR A241  
HAZELDEAN JAIPUR J140  
HAZELDEAN C33  
Sire: HAZELDEAN Q1237  
CARABAR DOCKLANDS D62  
HAZELDEAN J447  
HAZELDEAN D684

SITZ UPWARD 307R  
KROUPALS B&B IDENTITY  
B&B ERICA 605  
Dam: HAZELDEAN Q1940  
RENNYLEA NORF42  
HAZELDEAN J644  
HAZELDEAN F386

Front	Rear	Front	Rear	Front	Rear	MUSCLE	TEMP.	SHEATH
6	6	6	6	5	5	c+	2	4

Structural EBV's			
TACE	ANGLE	CLAW	LEGS
	+0.66	+0.38	1
ACC%	66%	66%	63%

TRANSTASMAN ANGUS CATTLE EVALUATION - FEBRUARY 2024																							
TACE	CALVING EASE				GROWTH & MATERNAL				FERTILITY		CWT	CARCASE					Doc	Angus Index	Dom	Heavy Grain	Heavy Grass		
	DIR	DTRS	GL	B Wt	200	400	600	MWt	Milk	SS	DC	C Wt	EMA	RIB	RUMP	RBY%	IMF%	Doc.					
EBV	+6.1	+7.3	-2.9	+2.4	+47	+83	+114	+56	+28	+2.8	-6.2	+75	+11.1	-0.4	+1	+1.4	+1.2	+25	+259	+211	+326	+246	
ACC%	64%	55%	82%	82%	83%	81%	81%	77%	73%	79%	43%	70%	69%	69%	70%	61%	74%	77%					

Square set high indexing bull with plenty of fertility and carcass bred into him. Top 11% for EMA and inside the top 20% for both calving ease direct and birth weight. Suitable for heifers.

Purchaser..... Price.....

**Top 5%**    **Top 10%**    **Top 30%**  
Ranking in Angus Aust. February 2024

**Proven Genetic Performance**

www.hazeldean.com.au

# Autumn 2024



# Sale Bulls

**46 HAZELDEAN T2155 (Nat) SV APR AMFU NHFU CAFU DDFU** Born: 27/08/2022 Society Id: NHZ22T2155

HAZELDEAN M74 ARDROSSAN EQUATOR A241  
 HAZELDEAN P143 HAZELDEAN JAIPUR J140  
 HAZELDEAN K37 HAZELDEAN C33  
 Sire: HAZELDEAN R597 Dam: HAZELDEAN N262  
 RENNYLEA EDMUND E11 MATAURI REALITY 839  
 HAZELDEAN L25 HAZELDEAN K1630  
 HAZELDEAN J19 HAZELDEAN H1604

Front	Rear	Front	Rear	Front	Rear	MUSCLE	TEMP.	SHEATH
6	6	6	6	5	5	C+	2	4

Structural EBV's			
TACE	ANGLE	CLAW	LEGS
	+0.94	+0.44	1.06
ACC%	60%	61%	59%

TRANSTASMAN ANGUS CATTLE EVALUATION - FEBRUARY 2024																						
TACE	CALVING EASE				GROWTH & MATERNAL				FERTILITY		CWT	CARCASE					Doc	Angus Index	Dom	Heavy Grain	Heavy Grass	
	DIR	DTRS	GL	B Wt	200	400	600	MWt	Milk	SS	DC	C Wt	EMA	RIB	RUMP	RBY%	IMF%	Doc.				
EBV	+2.1	+5.4	-7.7	+5.4	+62	+123	+166	+186	+12	+0.9	-5.3	+107	+1.2	-0.5	-1.3	0	+2.3	+12	+202	+172	+258	+189
ACC%	64%	54%	82%	81%	82%	80%	81%	78%	73%	79%	43%	70%	69%	69%	70%	61%	75%	76%				

Very easy fleshing type with explosive growth. A real curve bender here. Suitable for heifers.

Purchaser..... Price.....

**47 HAZELDEAN T2315 (Nat) SV APR AMFU NHFU CAFU DDFU** Born: 06/09/2022 Society Id: NHZ22T2315

G A R PROPHET BOOROOMOOKA UNDERTAKEN Y145  
 BALDRIDGE BEAST MODE B074 RENNYLEA EDMUND E11  
 BALDRIDGE ISABEL Y69 LAWSONS HENRY VIII Y5  
 Sire: HAZELDEAN R912 Dam: HAZELDEAN L392  
 HAZELDEAN JAIPUR J140 TE MANIA BERKLEY B1  
 HAZELDEAN P528 HAZELDEAN H415  
 HAZELDEAN K1107 HAZELDEAN F485

Front	Rear	Front	Rear	Front	Rear	MUSCLE	TEMP.	SHEATH
6	6	6	6	4	5	C+	1	4

Structural EBV's			
TACE	ANGLE	CLAW	LEGS
	+0.88	+0.66	0.88
ACC%	66%	66%	64%

TRANSTASMAN ANGUS CATTLE EVALUATION - FEBRUARY 2024																						
TACE	CALVING EASE				GROWTH & MATERNAL				FERTILITY		CWT	CARCASE					Doc	Angus Index	Dom	Heavy Grain	Heavy Grass	
	DIR	DTRS	GL	B Wt	200	400	600	MWt	Milk	SS	DC	C Wt	EMA	RIB	RUMP	RBY%	IMF%	Doc.				
EBV	-0.9	+7.4	-4.9	+5.1	+61	+97	+124	+110	+15	+1.2	-5.2	+81	+3	+0.2	-1.7	+0.3	+3.3	+35	+227	+187	+304	+206
ACC%	64%	55%	81%	80%	82%	79%	80%	76%	72%	77%	43%	68%	68%	67%	69%	59%	73%	74%				

Robust and deep type. Top 8% for docility and top 24% for IMF, top 10% for 200 day growth (weaning weight).

Purchaser..... Price.....

**48 HAZELDEAN T2498 (Nat) SV APR AMFU NHFU CAFU DDFU** Born: 18/09/2022 Society Id: NHZ22T2498

G A R PROPHET TE MANIA YORKSHIRE Y437  
 BALDRIDGE BEAST MODE B074 TE MANIA BERKLEY B1  
 BALDRIDGE ISABEL Y69 TE MANIA LOWAN Z53  
 Sire: HAZELDEAN REPRIMAND R303 Dam: HAZELDEAN K1103  
 HAZELDEAN F1023 TE MANIA INFINITY 04 379 AB  
 HAZELDEAN N334 HAZELDEAN G1028  
 HAZELDEAN L352 HAZELDEAN E376

Front	Rear	Front	Rear	Front	Rear	MUSCLE	TEMP.	SHEATH
6	6	6	5	5	5	C+	2	4

Structural EBV's			
TACE	ANGLE	CLAW	LEGS
	+0.72	+0.7	0.86
ACC%	66%	66%	65%

TRANSTASMAN ANGUS CATTLE EVALUATION - FEBRUARY 2024																						
TACE	CALVING EASE				GROWTH & MATERNAL				FERTILITY		CWT	CARCASE					Doc	Angus Index	Dom	Heavy Grain	Heavy Grass	
	DIR	DTRS	GL	B Wt	200	400	600	MWt	Milk	SS	DC	C Wt	EMA	RIB	RUMP	RBY%	IMF%	Doc.				
EBV	+8.5	+6.5	-3.3	+2.6	+47	+85	+112	+118	+7	+1.7	-6.6	+63	-3.2	+2.1	-0.8	-0.5	+5	+8	+199	+164	+259	+184
ACC%	67%	58%	83%	82%	83%	81%	81%	78%	73%	80%	46%	71%	70%	69%	71%	61%	74%	77%				

Strong frame along with abundant calving ease. Top 5% for IMF and top 12% for days to calving EBV. Suitable for heifers.

Purchaser..... Price.....

**Top 5%    Top 10%    Top 30%**

Ranking in Angus Aust. February 2024

## Proven Genetic Performance



# Autumn 2024



# Sale Bulls

**49 HAZELDEAN T2516 (Nat) SV APR AMFU NHFU CAFU DDFU** Born: 20/09/2022 Society Id: NHZ22T2516

H P C A INTENSITY  
RENNYLEA NORL519  
RENNYLEA H414  
Sire: HAZELDEAN RONALDO R1561  
G A R PROPHET  
HAZELDEAN J115  
HAZELDEAN A243

BASIN PAYWEIGHT 006S  
BASIN PAYWEIGHT 1682 USA17038724  
21AR O LASS 7017  
Dam: HAZELDEAN M265  
MILWILLAH GATSBY G279  
HAZELDEAN K1031  
HAZELDEAN F381

Front	Rear	Front	Rear	MUSCLE	TEMP.	SHEATH		
6	6	6	6	5	5	C+	1	4

Structural EBV's			
TACE	ANGLE	CLAW	LEGS
	+0.78	+0.52	1.02
ACC%	66%	66%	63%

TRANSTASMAN ANGUS CATTLE EVALUATION - FEBRUARY 2024																							
TACE	CALVING EASE				GROWTH & MATERNAL				FERTILITY		CWT	CARCASE					Doc	Angus Index	Dom	Heavy Grain	Heavy Grass		
	DIR	DTRS	GL	B Wt	200	400	600	MWt	Milk	SS	DC	C Wt	EMA	RIB	RUMP	RBV%	IMF%	Doc.					
EBV	-4.3	+2.5	-1.2	+5.3	+55	+94	+112	+93	+9	+1.2	-5.2	+68	+5.1	+2.7	+3.5	-0.8	+4.9	+16	+225	+183	+319	+207	
ACC%	64%	55%	82%	82%	82%	80%	80%	77%	73%	78%	42%	69%	67%	67%	68%	59%	72%	76%					

Athletic type mixed into a package of very positive fats and top 5% for IMF.

Purchaser..... Price.....

**50 HAZELDEAN T403 (AI) PV APR AMFU NHFU CAFU DDFU** Born: 29/07/2022 Society Id: NHZ22T403

G A R MOMENTUM USA17354145  
LAWSONS MOMENTOUS M518  
LAWSONS AFRICA H229 VLYH229  
Sire: MURDEDUKE QUARTERBACK Q011  
CARABAR DOCKLANDS D62  
MURDEDUKE BARUNDAH N026  
MURDEDUKE BARUNAH C191

TE MANIA AMBASSADOR A134  
TUWHARETOA REGENT D145  
LAWSONS HENRY VIII Y5  
Dam: HAZELDEAN JONAH J33  
L T 598 BANDO 9074  
HAZELDEAN D1114  
HAZELDEAN Z1025

Front	Rear	Front	Rear	MUSCLE	TEMP.	SHEATH		
6	6	6	6	5	5	C+	1	4

Structural EBV's			
TACE	ANGLE	CLAW	LEGS
	+1.06	+0.8	1.02
ACC%	72%	71%	71%

TRANSTASMAN ANGUS CATTLE EVALUATION - FEBRUARY 2024																							
TACE	CALVING EASE				GROWTH & MATERNAL				FERTILITY		CWT	CARCASE					Doc	Angus Index	Dom	Heavy Grain	Heavy Grass		
	DIR	DTRS	GL	B Wt	200	400	600	MWt	Milk	SS	DC	C Wt	EMA	RIB	RUMP	RBV%	IMF%	Doc.					
EBV	+1.5	-1.8	-7.5	+3.4	+49	+102	+137	+126	+20	+3.1	-3.5	+75	+9.4	+0.3	+0.3	+0.8	+2.7	+19	+198	+159	+261	+186	
ACC%	69%	60%	83%	82%	83%	82%	82%	79%	74%	80%	48%	72%	72%	71%	73%	63%	76%	78%					

Fantastic topline, very good quality young Quarterback son. All the data to make you start ticking. Suitable for heifers.

Purchaser..... Price.....

**51 HAZELDEAN T421 (AI) SV APR AMFU NHFU CAFU DDFU** Born: 29/07/2022 Society Id: NHZ22T421

RENNYLEA EDMUND E11  
RENNYLEA KODAK K522  
RENNYLEA EISA ERICA F810  
Sire: MURRAY KODAK N70  
GARDENS WAVE  
MURRAY WAVE J53  
TE MANIA QUEANBEYAN D113

ARDROSSAN EQUATOR A241  
BOWMONT JACKPOT SRKJ310  
ARDROSSAN WILCOOLA Z31  
Dam: HAZELDEAN M262  
V A R RESERVE 1111  
HAZELDEAN K1027  
HAZELDEAN D768

Front	Rear	Front	Rear	MUSCLE	TEMP.	SHEATH		
7	6	6	6	5	5	C+	2	4

Structural EBV's			
TACE	ANGLE	CLAW	LEGS
	+0.94	+0.74	1
ACC%	66%	66%	63%

TRANSTASMAN ANGUS CATTLE EVALUATION - FEBRUARY 2024																							
TACE	CALVING EASE				GROWTH & MATERNAL				FERTILITY		CWT	CARCASE					Doc	Angus Index	Dom	Heavy Grain	Heavy Grass		
	DIR	DTRS	GL	B Wt	200	400	600	MWt	Milk	SS	DC	C Wt	EMA	RIB	RUMP	RBV%	IMF%	Doc.					
EBV	+7.8	+6	-8.4	+0.6	+51	+95	+131	+109	+17	+5.4	-6.3	+83	+5.5	+0.6	-0.7	-0.5	+3.7	+24	+216	+171	+281	+209	
ACC%	67%	57%	84%	83%	84%	82%	83%	79%	75%	81%	48%	74%	73%	73%	74%	65%	78%	79%					

A really appealing birth to growth spread. Top 4% for birth weight and top 23% for 600d growth. Top 1% for scrotal size and handy IMF too. These type of bull can really take your herd forward. Suitable for heifers.

Purchaser..... Price.....

**Top 5%      Top 10%      Top 30%**

Ranking in Angus Aust. February 2024

**Proven Genetic Performance**

www.hazeldean.com.au

# Autumn 2024



# Sale Bulls

**52 HAZELDEAN T512 (AI) SV APR AMFU NHFU CAFU DDFU** Born: **31/07/2022**  
 Society Id: **NHZ22T512**

G A R PROPHET  
 BALDRIDGE BEAST MODE B074  
 BALDRIDGE ISABEL Y69  
**Sire: CLUNIE RANGE PLANTATION P392**  
 THOMAS UP RIVER 1614  
 CLUNIE RANGE NAOMI M516  
 CLUNIE RANGE NAOMI H5

RENNYLEA C574  
 HAZELDEAN HOBNAIL H360  
 HAZELDEAN F304  
**Dam: HAZELDEAN K866**  
 HAZELDEAN BENEDICT B569  
 HAZELDEAN G909  
 HAZELDEAN D772

Front	Rear	Front	Rear	Front	Rear	MUSCLE	TEMP.	SHEATH
6	6	5	6	5	5	C+	2	4

Structural EBV's			
TACE	ANGLE	CLAW	LEGS
	+0.8	+0.7	0.92
ACC%	70%	70%	67%

TRANSTASMAN ANGUS CATTLE EVALUATION - FEBRUARY 2024																							
TACE	CALVING EASE				GROWTH & MATERNAL				FERTILITY		CWT	CARCASE					Doc	Angus Index	Dom	Heavy Grain	Heavy Grass		
	DIR	DTRS	GL	B Wt	200	400	600	MWt	Milk	SS	DC	C Wt	EMA	RIB	RUMP	RBV%	IMF%	Doc.					
EBV	+4.8	+4.9	-4.3	+3.3	+61	+107	+139	+104	+18	+4.1	-6.2	+68	-3.7	-0.5	-1.2	-1.3	+3.5	+17	+221	+184	+292	+207	
ACC%	68%	57%	84%	82%	83%	82%	82%	78%	74%	80%	44%	73%	72%	71%	73%	63%	76%	78%					

Deep and soft with very good feet. A spread of EBVs which are highly sought after. Suitable for heifers.

Purchaser..... Price.....

**53 HAZELDEAN T521 (AI) PV APR AMFU NHFU CAFU DDFU** Born: **31/07/2022**  
 Society Id: **NHZ22T521**

ARDROSSAN EQUATOR A241  
 HAZELDEAN JAIPUR J140  
 HAZELDEAN C33  
**Sire: HAZELDEAN MAGNUM M586**  
 RENNYLEA C574  
 HAZELDEAN H356  
 HAZELDEAN F573

CARABAR DOCKLANDS D62  
 HAZELDEAN KURA K859  
 HAZELDEAN D952  
**Dam: HAZELDEAN M330**  
 HAZELDEAN HOKKAIDO H504  
 HAZELDEAN K1683  
 HAZELDEAN D802

Front	Rear	Front	Rear	Front	Rear	MUSCLE	TEMP.	SHEATH
7	6	6	6	5	6	C+	1	4

Structural EBV's			
TACE	ANGLE	CLAW	LEGS
	+1.12	+0.84	1.02
ACC%	67%	67%	64%

TRANSTASMAN ANGUS CATTLE EVALUATION - FEBRUARY 2024																							
TACE	CALVING EASE				GROWTH & MATERNAL				FERTILITY		CWT	CARCASE					Doc	Angus Index	Dom	Heavy Grain	Heavy Grass		
	DIR	DTRS	GL	B Wt	200	400	600	MWt	Milk	SS	DC	C Wt	EMA	RIB	RUMP	RBV%	IMF%	Doc.					
EBV	-0.5	-2.7	-5	+5.3	+56	+106	+134	+144	+13	+3	-8.6	+83	+5.5	+0.4	+0.9	+0.7	+1.9	+45	+228	+203	+283	+215	
ACC%	66%	55%	83%	82%	83%	81%	82%	79%	74%	80%	48%	73%	72%	72%	73%	64%	77%	77%					

A nice muscle pattern and all of what we liked about Hazeldean Magnum. Slicker skin type and a good all round package. Top 1% for docility.

Purchaser..... Price.....

**54 HAZELDEAN T714 (AI) PV APR AMFU NHFU CAFU DDFU** Born: **02/08/2022**  
 Society Id: **NHZ22T714**

S S OBJECTIVE T510 0T26  
 G A R TWINHEARTS 8418  
 G A R YIELD GRADE 2015  
**Sire: CONNAMARA P64**  
 TOPBOS AMBASSADOR F4  
 CONNAMARA  
 CONNAMARA G24

ARDROSSAN EQUATOR A241  
 HAZELDEAN KINGS CROSS K146  
 HAZELDEAN C353  
**Dam: HAZELDEAN M1113**  
 TE MANIA BERKLEY B1  
 HAZELDEAN F573  
 HAZELDEAN Z442

Front	Rear	Front	Rear	Front	Rear	MUSCLE	TEMP.	SHEATH
6	5	6	6	5	5	C+	2	4

Structural EBV's			
TACE	ANGLE	CLAW	LEGS
	+1	+0.74	0.98
ACC%	66%	66%	64%

TRANSTASMAN ANGUS CATTLE EVALUATION - FEBRUARY 2024																							
TACE	CALVING EASE				GROWTH & MATERNAL				FERTILITY		CWT	CARCASE					Doc	Angus Index	Dom	Heavy Grain	Heavy Grass		
	DIR	DTRS	GL	B Wt	200	400	600	MWt	Milk	SS	DC	C Wt	EMA	RIB	RUMP	RBV%	IMF%	Doc.					
EBV	-0.4	-4.1	-5.8	+6	+57	+97	+128	+124	+15	+2.7	-7.6	+77	+7.4	-2.5	-2.4	+0.8	+3.9	+14	+236	+196	+305	+223	
ACC%	64%	53%	83%	82%	82%	81%	81%	77%	72%	79%	41%	69%	68%	68%	69%	60%	73%	76%					

Plenty of frame and power here. Good structure and strong topline. Top 5% for days to calving and top 15% for IMF. Note: a small bit of white at the base of testes.

Purchaser..... Price.....

**Top 5%**      **Top 10%**      **Top 30%**

Ranking in Angus Aust. February 2024

## Proven Genetic Performance

# Autumn 2024



# Sale Bulls

**55 HAZELDEAN T1216 (AI) PV APR** Born: 27/08/2022  
 AMFU NHFU CAFU DDFU Society Id: NHZ22T1216

HAZELDEAN JAIPUR J140  
 HAZELDEAN MAGNUM M586  
 HAZELDEAN H356  
**Sire: HAZELDEAN Q319**  
 HAZELDEAN JALANA J1510  
 HAZELDEAN L1175  
 HAZELDEAN H1603

HAZELDEAN HALYARD H506  
 HAZELDEAN KINGDOM K665  
 HAZELDEAN G765  
**Dam: HAZELDEAN M322**  
 TE MANIA BERKLEY B1  
 HAZELDEAN K836  
 HAZELDEAN F503

Front	Rear	Front	Rear	Front	Rear	MUSCLE	TEMP.	SHEATH
7	6	6	6	5	5	C+	1	5

Structural EBV's			
TACE	ANGLE	CLAW	LEGS
	+1.02	+0.76	1.04
ACC%	60%	60%	57%

TRANSTASMAN ANGUS CATTLE EVALUATION - FEBRUARY 2024																							
TACE	CALVING EASE				GROWTH & MATERNAL				FERTILITY		CWT	CARCASE					Doc	Angus Index	Dom	Heavy Grain	Heavy Grass		
	DIR	DTRS	GL	B Wt	200	400	600	MWt	Milk	SS	DC	C Wt	EMA	RIB	RUMP	RBV%	IMF%	Doc.					
<b>EBV</b>	-1.6	+2.1	-7.8	+5.9	+53	+102	+130	+131	+10	+3.1	-10.7	+63	+5.5	+1.4	-0.5	+0.2	+2.9	+31	+240	+214	+291	+232	
<b>ACC%</b>	63%	51%	82%	82%	83%	81%	81%	77%	72%	79%	41%	70%	68%	68%	69%	59%	73%	76%					

Long and strong topline. Plenty of growth for your cows here and top 1% for days to calving EBV. Top 20% for 400d growth.

Purchaser..... Price.....

**56 HAZELDEAN T62 (ET) PV APR** Born: 22/07/2022  
 AMFU NHFU CAFU DDFU Society Id: NHZ22T62

ARDROSSAN EQUATOR A241  
 HAZELDEAN JAIPUR J140  
 HAZELDEAN C33  
**Sire: HAZELDEAN P434**  
 RENNYLEA EDMUND E11  
 HAZELDEAN L527  
 HAZELDEAN E453

G A R SOLUTION  
 LAWSONS INVINCIBLE C402  
 LAWSONS PREDESTINED A598  
**Dam: HAZELDEAN H844**  
 KCF BENNETT TOTAL USA13687063  
 HAZELDEAN TOTAL C516  
 HAZELDEAN A605

Front	Rear	Front	Rear	Front	Rear	MUSCLE	TEMP.	SHEATH
6	6	6	7	5	6	C+	2	4

Structural EBV's			
TACE	ANGLE	CLAW	LEGS
	+1.26	+0.6	1.16
ACC%	69%	69%	65%

TRANSTASMAN ANGUS CATTLE EVALUATION - FEBRUARY 2024																							
TACE	CALVING EASE				GROWTH & MATERNAL				FERTILITY		CWT	CARCASE					Doc	Angus Index	Dom	Heavy Grain	Heavy Grass		
	DIR	DTRS	GL	B Wt	200	400	600	MWt	Milk	SS	DC	C Wt	EMA	RIB	RUMP	RBV%	IMF%	Doc.					
<b>EBV</b>	+7.4	+7.3	-9.1	+4.2	+45	+75	+94	+69	+15	+2.5	-8	+56	+5.2	+1.6	-0.5	+0.9	+1.4	+38	+225	+198	+276	+210	
<b>ACC%</b>	65%	55%	83%	82%	83%	82%	82%	78%	73%	80%	47%	73%	72%	72%	73%	64%	76%	77%					

Meaty type with a nice birth to growth spread. Good commercial traits for a cow and calf operation. Suitable for heifers.

Purchaser..... Price.....

**57 HAZELDEAN T77 (ET) PV APR** Born: 24/07/2022  
 AMFU NHFU CAFU DDFU Society Id: NHZ22T77

G A R INGENUITY  
 H P C A INTENSITY  
 G A R PREDESTINED 287L  
**Sire: RENNYLEA NORL519**  
 TE MANIA BERKLEY B1  
 RENNYLEA H414  
 RENNYLEA C310

C R A BEXTOR 872 5205 608  
 G A R PROPHET  
 G A R OBJECTIVE 1885  
**Dam: HAZELDEAN J823**  
 HAZELDEAN CARDRONA C677  
 HAZELDEAN G724

Front	Rear	Front	Rear	Front	Rear	MUSCLE	TEMP.	SHEATH
6	6	6	6	4	5	C+	1	4

Structural EBV's			
TACE	ANGLE	CLAW	LEGS
	+0.76	+0.76	0.64
ACC%	74%	74%	72%

TRANSTASMAN ANGUS CATTLE EVALUATION - FEBRUARY 2024																							
TACE	CALVING EASE				GROWTH & MATERNAL				FERTILITY		CWT	CARCASE					Doc	Angus Index	Dom	Heavy Grain	Heavy Grass		
	DIR	DTRS	GL	B Wt	200	400	600	MWt	Milk	SS	DC	C Wt	EMA	RIB	RUMP	RBV%	IMF%	Doc.					
<b>EBV</b>	+3.1	+2.7	-6.2	+2.5	+50	+95	+126	+104	+22	+0.3	-1.1	+59	+9.5	-1.7	-2.5	+0.2	+5.5	+25	+204	+149	+297	+187	
<b>ACC%</b>	73%	66%	84%	84%	85%	83%	84%	82%	79%	82%	55%	75%	74%	74%	75%	68%	77%	81%					

Super docile L519 son with big carcass traits on offer. The 3rd full flush brother in the sale from the Hazeldean super cow in J823. Top 3% for IMF and top 33% for 600d. Suitable for heifers.

Purchaser..... Price.....

**Top 5%**    **Top 10%**    **Top 30%**

Ranking in Angus Aust. February 2024

**Proven Genetic Performance**

www.hazeldean.com.au



# Autumn 2024



# Sale Bulls

**58 HAZELDEAN T92 (ET) PV APR AMFU NHFU CAFU DDFU** Born: 27/07/2022 Society Id: NHZ22T92

C R A BEXTOR 872 5205 608 KAROO W109 DIRECTION Z181  
 G A R PROPHET CARABAR DOCKLANDS D62  
 G A R OBJECTIVE 1885 CARABAR BLACKCAP MARY B12  
**Sire: BALDRIDGE BEAST MODE B074** **Dam: HAZELDEAN J447**  
 STYLES UPGRADE J59 BONGONGO BULLETPROOF Z3  
 BALDRIDGE ISABEL Y69 HAZELDEAN D684  
 BALDRIDGE ISABEL T935 HAZELDEAN BANDO B578

Front	Rear	Front	Rear	Front	Rear	MUSCLE	TEMP.	SHEATH
7	6	6	6	5	5	C+	1	4

Structural EBV's			
TACE	ANGLE	CLAW	LEGS
	+0.82	+0.78	0.88
ACC%	74%	74%	71%

TRANSTASMAN ANGUS CATTLE EVALUATION - FEBRUARY 2024																							
TACE	CALVING EASE				GROWTH & MATERNAL				FERTILITY		CWT	CARCASS					Doc	Angus Index	Dom	Heavy Grain	Heavy Grass		
	DIR	DTRS	GL	B Wt	200	400	600	MWt	Milk	SS	DC	C Wt	EMA	RIB	RUMP	RBV%	IMF%	Doc.					
EBV	+0.1	+0.7	-1.1	+5.1	+59	+101	+141	+136	+11	+2.8	-1.3	+70	+7.3	-1	-0.9	+0.2	+3.2	+19	+182	+133	+254	+166	
ACC%	72%	65%	83%	83%	84%	82%	83%	80%	77%	81%	53%	74%	73%	73%	74%	67%	76%	80%					

Thick set and powerful type with lots of carcase to go with him. Lots of punch for your cows here.

Purchaser..... Price.....

**59 HAZELDEAN T301 (AI) SV APR AMFU NHFU CAFU DDFU** Born: 26/07/2022 Society Id: NHZ22T301

G A R INGENUITY MATAURI REALITY 839  
 H P C A INTENSITY KAROO KNOCKOUT K176  
 G A R PREDESTINED 287L KAROO JEDDA H213  
**Sire: RENNYLEA NATIONWIDE N432** **Dam: HAZELDEAN Q815**  
 TE MANIA BERKLEY B1 HAZELDEAN KIBBITZ K553  
 RENNYLEA H367 HAZELDEAN N1104  
 RENNYLEA F228 HAZELDEAN K303

Front	Rear	Front	Rear	Front	Rear	MUSCLE	TEMP.	SHEATH
6	6	6	6	5	5	C+	1	3

Structural EBV's			
TACE	ANGLE	CLAW	LEGS
	+0.88	+0.62	1.2
ACC%	66%	66%	65%

TRANSTASMAN ANGUS CATTLE EVALUATION - FEBRUARY 2024																							
TACE	CALVING EASE				GROWTH & MATERNAL				FERTILITY		CWT	CARCASS					Doc	Angus Index	Dom	Heavy Grain	Heavy Grass		
	DIR	DTRS	GL	B Wt	200	400	600	MWt	Milk	SS	DC	C Wt	EMA	RIB	RUMP	RBV%	IMF%	Doc.					
EBV	+7.1	+9.5	-6.9	+3	+65	+117	+151	+151	+14	+1.1	-4.5	+97	+2	+0.2	+0.3	-0.6	+3	+25	+230	+191	+311	+212	
ACC%	64%	55%	82%	81%	82%	81%	81%	77%	73%	79%	43%	69%	69%	69%	70%	61%	73%	76%					

A very large birth to growth spread! Top 2% for carcase weight and 400d growth. Bucket loads of calving ease to go in the mix. Suitable for heifers.

Purchaser..... Price.....

**60 HAZELDEAN T499 (AI) SV APR AMFU NHFU CAFU DDFU** Born: 31/07/2022 Society Id: NHZ22T499

ARDROSSAN EQUATOR A241 PAPA EQUATOR 2928  
 HAZELDEAN JAIPUR J140 ARDROSSAN EQUATOR A241  
 HAZELDEAN C33 ARDROSSAN PRINCESS W38  
**Sire: HAZELDEAN MAGNUM M586** **Dam: HAZELDEAN G50**  
 RENNYLEA C574 HAZELDEAN FUTURA W133  
 HAZELDEAN H356 HAZELDEAN FUTURA A981  
 HAZELDEAN F573 HAZELDEAN W891

Front	Rear	Front	Rear	Front	Rear	MUSCLE	TEMP.	SHEATH
6	6	6	6	5	0	C+	2	4

Structural EBV's			
TACE	ANGLE	CLAW	LEGS
	+0.86	+0.44	1.1
ACC%	66%	66%	63%

TRANSTASMAN ANGUS CATTLE EVALUATION - FEBRUARY 2024																							
TACE	CALVING EASE				GROWTH & MATERNAL				FERTILITY		CWT	CARCASS					Doc	Angus Index	Dom	Heavy Grain	Heavy Grass		
	DIR	DTRS	GL	B Wt	200	400	600	MWt	Milk	SS	DC	C Wt	EMA	RIB	RUMP	RBV%	IMF%	Doc.					
EBV	+3.4	+8	-4.1	+3.6	+45	+84	+111	+93	+16	+5.4	-8.5	+65	+13.1	-2.6	-3.7	+1.9	+3.9	+33	+259	+221	+317	+255	
ACC%	70%	60%	84%	84%	85%	83%	83%	81%	77%	82%	54%	76%	75%	75%	76%	67%	79%	80%					

Long bodied with plenty of scope. Huge EMA and IMF. Calving ease and fertility to suit all females on our farm. Suitable for heifers.

Purchaser..... Price.....

**Top 5%** **Top 10%** **Top 30%**  
 Ranking in Angus Aust. February 2024

# Autumn 2024



# Sale Bulls

**61 HAZELDEAN T523 (AI) SV APR AMFU NHFU CAFU DDFU** Born: 31/07/2022 Society Id: NHZ22T523

G A R MOMENTUM USA17354145 SYDGEN TRUST 6228  
 LAWSONS MOMENTOUS M518 SYDGEN BLACK PEARL 2006  
 LAWSONS AFRICA H229 VLYH229 SYDGEN ANITA 8611  
**Sire: MURDEDUKE QUARTERBACK Q011** **Dam: HAZELDEAN M656**  
 CARABAR DOCKLANDS D62 HAZELDEAN BENEDICT B569  
 MURDEDUKE BARUNDAH N026 HAZELDEAN F481  
 MURDEDUKE BARUNAH C191 HAZELDEAN C3

Front	Rear	Front	Rear	Front	Rear	MUSCLE	TEMP.	SHEATH
7	6	7	7	5	5	C+	1	4

Structural EBV's			
TACE	ANGLE	CLAW	LEGS
	+1.04	+0.76	1.08
ACC%	70%	70%	68%

TRANSTASMAN ANGUS CATTLE EVALUATION - FEBRUARY 2024																						
TACE	CALVING EASE				GROWTH & MATERNAL				FERTILITY		CWT	CARCASE					Doc	Angus Index	Dom	Heavy Grain	Heavy Grass	
	DIR	DTRS	GL	B Wt	200	400	600	MWt	Milk	SS	DC	C Wt	EMA	RIB	RUMP	RBV%	IMF%	Doc.				
EBV	+3	+0.1	-4.8	+3.3	+52	+99	+141	+98	+22	+3.5	-4.2	+84	+6.7	+1.1	+1.4	-0.1	+3.6	+31	+227	+170	+302	+218
ACC%	69%	59%	83%	82%	83%	81%	82%	78%	73%	80%	47%	72%	71%	71%	72%	62%	75%	78%				

Long well made son of Quarterback. Plenty of balance and a very cool birth to growth to mature cow weight EBV speed. Unique to have the Mcow so much lower than 600d. Suitable for heifers.

Purchaser..... Price.....

**62 HAZELDEAN T638 (AI) SV APR AMFU NHFU CAFU DDFU** Born: 01/08/2022 Society Id: NHZ22T638

HAZELDEAN JAIPUR J140 SYDGEN TRUST 6228  
 HAZELDEAN MAGNUM M586 SYDGEN BLACK PEARL 2006  
 HAZELDEAN H356 SYDGEN ANITA 8611  
**Sire: HAZELDEAN Q319** **Dam: HAZELDEAN M130**  
 HAZELDEAN JALANA J1510 TE MANIA BERKLEY B1  
 HAZELDEAN L1175 HAZELDEAN K667  
 HAZELDEAN H1603 HAZELDEAN B821

Front	Rear	Front	Rear	Front	Rear	MUSCLE	TEMP.	SHEATH
6	6	5	6	5	5	C+	1	5

Structural EBV's			
TACE	ANGLE	CLAW	LEGS
	+0.9	+0.8	0.98
ACC%	65%	66%	63%

TRANSTASMAN ANGUS CATTLE EVALUATION - FEBRUARY 2024																						
TACE	CALVING EASE				GROWTH & MATERNAL				FERTILITY		CWT	CARCASE					Doc	Angus Index	Dom	Heavy Grain	Heavy Grass	
	DIR	DTRS	GL	B Wt	200	400	600	MWt	Milk	SS	DC	C Wt	EMA	RIB	RUMP	RBV%	IMF%	Doc.				
EBV	-2.6	+6.5	-6	+3.9	+55	+102	+145	+144	+18	+1.7	-6.9	+85	+5.7	+0.1	-1.2	0	+3	+20	+206	+162	+264	+195
ACC%	64%	54%	83%	81%	82%	80%	80%	77%	72%	78%	44%	70%	69%	69%	70%	60%	74%	76%				

Plenty of capacity and great depth. Great overall structure. Suitable for heifers.

Purchaser..... Price.....

**63 HAZELDEAN T697 (AI) SV APR AMFU NHFU CAFU DD50%** Born: 02/08/2022 Society Id: NHZ22T697

TE MANIA BERKLEY B1 TE MANIA BARTEL B219  
 HAZELDEAN F1023 DUNOON EVIDENT E614  
 HAZELDEAN B723 DUNOON ELSA B681  
**Sire: HAZELDEAN Q1229** **Dam: HAZELDEAN H625**  
 G A R PROPHET TE MANIA BERKLEY B1  
 HAZELDEAN J823 HAZELDEAN F335  
 HAZELDEAN G724 HAZELDEAN D705

Front	Rear	Front	Rear	Front	Rear	MUSCLE	TEMP.	SHEATH
6	5	6	5	4	5	C+	1	4

Structural EBV's			
TACE	ANGLE	CLAW	LEGS
	+0.68	+0.4	0.92
ACC%	65%	65%	61%

TRANSTASMAN ANGUS CATTLE EVALUATION - FEBRUARY 2024																						
TACE	CALVING EASE				GROWTH & MATERNAL				FERTILITY		CWT	CARCASE					Doc	Angus Index	Dom	Heavy Grain	Heavy Grass	
	DIR	DTRS	GL	B Wt	200	400	600	MWt	Milk	SS	DC	C Wt	EMA	RIB	RUMP	RBV%	IMF%	Doc.				
EBV	+4.2	+2.9	-3.4	+1	+44	+88	+96	+54	+23	+3.5	-7.9	+69	+8.3	-0.4	0	+0.3	+5.5	+19	+270	+235	+361	+257
ACC%	67%	57%	84%	83%	84%	82%	82%	79%	75%	80%	45%	72%	71%	71%	72%	62%	75%	78%				

Athletic and slicker type. Hazeldean Q1229 is one of you best young sire's with a big future. Big index's attributed to his lower mature cow weight, awesome calving ease and fertility. Top 3% for IMF. Suitable for heifers.

Purchaser..... Price.....

**Top 5%** **Top 10%** **Top 30%**

Ranking in Angus Aust. February 2024

## Proven Genetic Performance

# Autumn 2024



# Sale Bulls

**64 HAZELDEAN T726 (AI) PV APR AMFU NHFU CAFU DDFU** Born: 02/08/2022 Society Id: NHZ22T726

RENNYLEA EDMUND E11  
 RENNYLEA KODAK K522  
 RENNYLEA EISA ERICA F810  
**Sire: MURRAY KODAK N70**  
 GARDENS WAVE  
 MURRAY WAVE J53  
 TE MANIA QUEANBEYAN D113

MATAURI REALITY 839  
 KAROO KNOCKOUT K176  
 KAROO JEDDA H213  
**Dam: HAZELDEAN Q448**  
 HAZELDEAN JACKY J127  
 HAZELDEAN L1061  
 HAZELDEAN J763

Front	Rear	Front	Rear	Front	Rear	MUSCLE	TEMP.	SHEATH
6	6	5	5	4	5	C+	1	4

Structural EBV's			
TACE	ANGLE	CLAW	LEGS
	+0.8	+0.76	0.88
ACC%	69%	69%	67%

TRANSTASMAN ANGUS CATTLE EVALUATION - FEBRUARY 2024																						
TACE	CALVING EASE				GROWTH & MATERNAL				FERTILITY			CWT	CARCASE					Doc	Angus Index	Dom	Heavy Grain	Heavy Grass
	DIR	DTRS	GL	B Wt	200	400	600	MWt	Milk	SS	DC	C Wt	EMA	RIB	RUMP	RBY%	IMF%	Doc.				
EBV	-0.6	+4.3	-5	+4.8	+60	+103	+135	+127	+19	+5.8	-4.4	+76	+10.5	-1.5	-2.3	+1.4	+2.3	+32	+223	+185	+290	+210
ACC%	64%	53%	82%	81%	82%	80%	80%	77%	72%	78%	43%	71%	70%	70%	71%	61%	74%	76%				

Yard sheet comment was 'a brilliant set of nuts!' Top 1% for scrotal size EBV backs this up. Top 12% for EMA and better than breed average for IMF. Suitable for heifers.

Purchaser..... Price.....

**65 HAZELDEAN T963 (AI) PV APR AMFU NHFU CAFU DDFU** Born: 05/08/2022 Society Id: NHZ22T963

G A R PROPHET  
 TE MANIA KIRBY K138  
 TE MANIA H17  
**Sire: TE MANIA QARARA Q514**  
 TE MANIA JOE J963  
 TE MANIA BARUNAH L537  
 TE MANIA BARUNAH H219

HAZELDEAN JAIPUR J140  
 HAZELDEAN MAGNUM M586  
 HAZELDEAN H356  
**Dam: HAZELDEAN Q371**  
 TE MANIA BERKLEY B1  
 HAZELDEAN G703  
 HAZELDEAN Z535

Front	Rear	Front	Rear	Front	Rear	MUSCLE	TEMP.	SHEATH
6	6	6	7	6	5	C+	2	4

Structural EBV's			
TACE	ANGLE	CLAW	LEGS
	+1.08	+0.56	1.28
ACC%	68%	68%	67%

TRANSTASMAN ANGUS CATTLE EVALUATION - FEBRUARY 2024																						
TACE	CALVING EASE				GROWTH & MATERNAL				FERTILITY			CWT	CARCASE					Doc	Angus Index	Dom	Heavy Grain	Heavy Grass
	DIR	DTRS	GL	B Wt	200	400	600	MWt	Milk	SS	DC	C Wt	EMA	RIB	RUMP	RBY%	IMF%	Doc.				
EBV	+5.2	+6.5	-6.4	+2.6	+46	+80	+103	+91	+20	+3.6	-11.2	+64	+6.8	-2	-2.1	+0.8	+4.4	+33	+266	+228	+328	+256
ACC%	64%	53%	83%	82%	83%	81%	80%	77%	72%	79%	42%	70%	70%	69%	71%	61%	74%	77%				

Genuine softness along with thickness. A real carcass bull with top 9% of the breed IMF EBV. Outstanding economic indexing. Suitable for heifers. Note: a little shite at the base of testes.

Purchaser..... Price.....

**66 HAZELDEAN T1135 (AI) SV APR AMFU NHFU CAFU DDFU** Born: 10/08/2022 Society Id: NHZ22T1135

G A R PROPHET  
 BALDRIDGE BEAST MODE B074  
 BALDRIDGE ISABEL Y69  
**Sire: HAZELDEAN REPRIMAND R303**  
 HAZELDEAN F1023  
 HAZELDEAN N334  
 HAZELDEAN L352

ARDROSSAN ADMIRAL A2  
 HAZELDEAN ADMIRAL D960  
 HAZELDEAN X418  
**Dam: HAZELDEAN G881**  
 HAZELDEAN RENAISSANCE R13  
 HAZELDEAN B1382  
 HAZELDEAN Z944

Front	Rear	Front	Rear	Front	Rear	MUSCLE	TEMP.	SHEATH
6	5	6	6	4	5	C+	2	4

Structural EBV's			
TACE	ANGLE	CLAW	LEGS
	+0.74	+0.54	1.06
ACC%	64%	64%	61%

TRANSTASMAN ANGUS CATTLE EVALUATION - FEBRUARY 2024																						
TACE	CALVING EASE				GROWTH & MATERNAL				FERTILITY			CWT	CARCASE					Doc	Angus Index	Dom	Heavy Grain	Heavy Grass
	DIR	DTRS	GL	B Wt	200	400	600	MWt	Milk	SS	DC	C Wt	EMA	RIB	RUMP	RBY%	IMF%	Doc.				
EBV	+4	+6	+2.3	+3.8	+65	+101	+135	+99	+22	+3.4	-5.1	+91	+10.8	-2.9	-5.3	+1	+5.5	+12	+284	+223	+388	+272
ACC%	66%	56%	84%	82%	83%	81%	81%	78%	74%	80%	45%	71%	69%	69%	70%	61%	74%	77%				

Long and strong type with good presence. Great birth to growth - top 11% for EMA and top 3% for IMF. Top 1% for lots of indexes. Top 18% for 600d with a much lower mature cow weight EBV. Suitable for heifers. Note: A small amount of white at the base of testes

Purchaser..... Price.....

**Top 5%**    **Top 10%**    **Top 30%**  
 Ranking in Angus Aust. February 2024

## Proven Genetic Performance



# Autumn 2024



# Sale Bulls

**67 HAZELDEAN T1227 (AI) SV HBR** Born: 31/08/2022  
 AMFU NHFU CAFU DDFU Society Id: NH222T1227

RENNYLEA EDMUND E11 SYDGEN TRUST 6228  
 RENNYLEA KODAK K522 SYDGEN BLACK PEARL 2006  
 RENNYLEA EISA ERICA F810 SYDGEN ANITA 8611  
**Sire: MURRAY KODAK N70** **Dam: HAZELDEAN L3**  
 GARDENS WAVE LAWSONS TANK VLY B1155  
 MURRAY WAVE J53 HAZELDEAN J234  
 TE MANIA QUEANBEYAN D113 HAZELDEAN G125

Front	Rear	Front	Rear	Front	Rear	MUSCLE	TEMP.	SHEATH
7	6	6	6	5	6	C+	2	3

Structural EBV's			
TACE	ANGLE	CLAW	LEGS
	+0.88	+0.66	1.04
ACC%	70%	70%	68%

TRANSTASMAN ANGUS CATTLE EVALUATION - FEBRUARY 2024																							
TACE	CALVING EASE				GROWTH & MATERNAL				FERTILITY		CWT	CARCASE					Doc	Angus Index	Dom	Heavy Grain	Heavy Grass		
	DIR	DTRS	GL	B Wt	200	400	600	MWt	Milk	SS	DC	C Wt	EMA	RIB	RUMP	RBV%	IMF%	Doc.					
EBV	+2.9	+6.1	-7.8	+2.7	+43	+79	+115	+99	+17	+3.2	-6.9	+62	+11.5	+0.9	+0.9	+0.8	+2.8	+7	+221	+173	+277	+214	
ACC%	66%	56%	82%	82%	83%	81%	81%	78%	74%	80%	47%	73%	72%	72%	73%	63%	77%	78%					

Thickness with lots of calving easy. Top 8% EMA and very good days to calving. Suitable for heifers.

Purchaser..... Price.....

**68 HAZELDEAN T2442 (Nat) PV APR** Born: 13/09/2022  
 AMFU NHFU CAFU DDFU Society Id: NH222T2442

RENNYLEA C511 HAZELDEAN JAIPUR J140  
 RENNYLEA NORH708 HAZELDEAN MAGNUM M586  
 RENNYLEA E176 HAZELDEAN H356  
**Sire: HAZELDEAN R23** **Dam: HAZELDEAN Q453**  
 HAZELDEAN L1301 S A V THUNDERBIRD 9061  
 HAZELDEAN N1301 HAZELDEAN K862  
 HAZELDEAN L416 HAZELDEAN E520

Front	Rear	Front	Rear	Front	Rear	MUSCLE	TEMP.	SHEATH
6	6	6	6	6	5	C+	2	4

Structural EBV's			
TACE	ANGLE	CLAW	LEGS
	+0.8	+0.7	0.96
ACC%	63%	63%	60%

TRANSTASMAN ANGUS CATTLE EVALUATION - FEBRUARY 2024																							
TACE	CALVING EASE				GROWTH & MATERNAL				FERTILITY		CWT	CARCASE					Doc	Angus Index	Dom	Heavy Grain	Heavy Grass		
	DIR	DTRS	GL	B Wt	200	400	600	MWt	Milk	SS	DC	C Wt	EMA	RIB	RUMP	RBV%	IMF%	Doc.					
EBV	+9.5	+9.6	-1.6	+0.4	+51	+93	+116	+93	+12	+5.1	-7.8	+57	+6.4	-1.5	-1.1	+0.4	+4.6	+25	+264	+225	+339	+255	
ACC%	64%	53%	82%	81%	82%	80%	80%	77%	72%	78%	43%	70%	70%	69%	71%	61%	75%	75%					

Heavy set young bull with very thick limbs. Lots of weight in a moderate package. Very economically relevant with high indexes. Money making traits - calving easy and fertility. To 7% for IMF with better than breed average 200d and 400d growth EBVs. Suitable for heifers.

Purchaser..... Price.....

**69 HAZELDEAN T2447 (Nat) PV APR** Born: 13/09/2022  
 AMFU NHFU CA50% DD50% Society Id: NH222T2447

HAZELDEAN JAIPUR J140 RENNYLEA EDMUND E11  
 HAZELDEAN MAGNUM M586 HAZELDEAN LAMARCK L609  
 HAZELDEAN H356 HAZELDEAN BRAVE E470  
**Sire: HAZELDEAN Q319** **Dam: HAZELDEAN Q1608**  
 HAZELDEAN JALANA J1510 HAZELDEAN FORTIFY F88  
 HAZELDEAN L1175 HAZELDEAN H969  
 HAZELDEAN H1603 HAZELDEAN F409

Front	Rear	Front	Rear	Front	Rear	MUSCLE	TEMP.	SHEATH
7	6	7	7	5	5	C+	1	4

Structural EBV's			
TACE	ANGLE	CLAW	LEGS
	+1.22	+0.92	1.26
ACC%	60%	61%	59%

TRANSTASMAN ANGUS CATTLE EVALUATION - FEBRUARY 2024																							
TACE	CALVING EASE				GROWTH & MATERNAL				FERTILITY		CWT	CARCASE					Doc	Angus Index	Dom	Heavy Grain	Heavy Grass		
	DIR	DTRS	GL	B Wt	200	400	600	MWt	Milk	SS	DC	C Wt	EMA	RIB	RUMP	RBV%	IMF%	Doc.					
EBV	+6.5	+6.6	-4.4	+2.8	+54	+98	+132	+115	+20	+2.6	-8.8	+78	+11	+3	+2.7	+0.6	+1.5	+11	+267	+224	+333	+256	
ACC%	63%	51%	82%	81%	82%	80%	80%	77%	72%	79%	40%	70%	68%	68%	69%	59%	73%	76%					

Good overall balance - very handy birth to growth spread. Great fats and a big set of indexes, sired by one of our best up and comers- Hazeldean Q319. Suitable for heifers.

Purchaser..... Price.....

**Top 5%** **Top 10%** **Top 30%**

Ranking in Angus Aust. February 2024

## Proven Genetic Performance

# Autumn 2024



# Sale Bulls

**70 HAZELDEAN T506 (AI) SV HBR** Born: 31/07/2022  
 AMFU NHFU CAFU DDFU Society Id: NHZ22T506

RENNYLEA EDMUND E11 KAROO W109 DIRECTION Z181  
 RENNYLEA KODAK K522 CARABAR DOCKLANDS D62  
 RENNYLEA EISA ERICA F810 CARABAR BLACKCAP MARY B12  
**Sire: MURRAY KODAK N70** **Dam: HAZELDEAN K8**  
 GARDENS WAVE TE MANIA BERKLEY B1  
 MURRAY WAVE J53 HAZELDEAN F111  
 TE MANIA QUEANBEYAN D113 HAZELDEAN D103

Front	Rear	Front	Rear	MUSCLE	TEMP.	SHEATH		
6	6	5	6	4	5	C+	2	4

Structural EBV's			
TACE	ANGLE	CLAW	LEGS
	+0.82	+0.74	1.06
ACC%	68%	67%	66%

TRANSTASMAN ANGUS CATTLE EVALUATION - FEBRUARY 2024																							
TACE	CALVING EASE				GROWTH & MATERNAL				FERTILITY		CWT	CARCASE					Doc	Angus Index	Dom	Heavy Grain	Heavy Grass		
	DIR	DTRS	GL	B Wt	200	400	600	MWt	Milk	SS	DC	C Wt	EMA	RIB	RUMP	RBY%	IMF%	Doc.					
EBV	+3.8	-0.7	-7.1	+4.1	+50	+86	+119	+113	+18	+3.9	-7.3	+63	+4.4	0	-0.5	+0.6	+1.4	-2	+195	+162	+241	+184	
ACC%	68%	60%	84%	83%	84%	82%	83%	80%	76%	80%	49%	75%	74%	74%	75%	66%	78%	79%					

Square back end with an athletic movement. Moderate frame in a highly fertile package. Suitable for heifers.

Purchaser..... Price.....

**71 HAZELDEAN T1848 (Nat) PV APR** Born: 17/08/2022  
 AMFU NHFU CAFU DD3% Society Id: NHZ22T1848

H P C A INTENSITY PAPA EQUATOR 2928  
 RENNYLEA NORL519 ARDROSSAN EQUATOR A241  
 RENNYLEA H414 ARDROSSAN PRINCESS W38  
**Sire: HAZELDEAN R1650** **Dam: BURENDA QUAIL R80**  
 MUSGRAVE MEDIATOR 29AN1988 BURENDA GEIGER COUNTER G49  
 HAZELDEAN N500 BURENDA QUAIL K428  
 HAZELDEAN K648 BURENDA QUAIL H313

Front	Rear	Front	Rear	MUSCLE	TEMP.	SHEATH		
6	6	6	6	5	5	C+	2	4

Structural EBV's			
TACE	ANGLE	CLAW	LEGS
	+0.8	+0.84	0.98
ACC%	65%	64%	64%

TRANSTASMAN ANGUS CATTLE EVALUATION - FEBRUARY 2024																							
TACE	CALVING EASE				GROWTH & MATERNAL				FERTILITY		CWT	CARCASE					Doc	Angus Index	Dom	Heavy Grain	Heavy Grass		
	DIR	DTRS	GL	B Wt	200	400	600	MWt	Milk	SS	DC	C Wt	EMA	RIB	RUMP	RBY%	IMF%	Doc.					
EBV	-0.9	-1.9	-6.7	+5.2	+53	+108	+140	+138	+21	+3.7	-5.6	+78	+13.1	-2.1	-3.9	+1.9	+2.3	+29	+220	+190	+277	+210	
ACC%	65%	57%	81%	81%	82%	80%	81%	77%	73%	78%	45%	70%	70%	69%	71%	61%	75%	76%					

An attractive young sire with a great skin type and good square stance.

Purchaser..... Price.....

**72 HAZELDEAN T184 (AI) APR** Born: 18/07/2022  
 Society Id: NHZ22T184

TE MANIA CALAMUS C46 RENNYLEA C511  
 TE MANIA FOE F734 RENNYLEA NORH708  
 TE MANIA DANDLOO D700 RENNYLEA E176  
**Sire: CHILTERN PARK MOE M6** **Dam: HAZELDEAN R161**  
 HIDDEN VALLEY TIMEOUT A45 HAZELDEAN KATZEN K416  
 STRATHEWEN TIMEOUT JADE F15 HAZELDEAN N968  
 STRATHEWEN 1407 JADE C05 HAZELDEAN H643

Front	Rear	Front	Rear	MUSCLE	TEMP.	SHEATH		
0	0	0	0	0	0	0		

Structural EBV's			
TACE	ANGLE	CLAW	LEGS
	-	-	
ACC%	-	-	%

TRANSTASMAN ANGUS CATTLE EVALUATION - FEBRUARY 2024																							
TACE	CALVING EASE				GROWTH & MATERNAL				FERTILITY		CWT	CARCASE					Doc	Angus Index	Dom	Heavy Grain	Heavy Grass		
	DIR	DTRS	GL	B Wt	200	400	600	MWt	Milk	SS	DC	C Wt	EMA	RIB	RUMP	RBY%	IMF%	Doc.					
EBV	-3.6	+0.1	-4	+4.1	+48	+92	+115	+91	+18	+0.6	-5.1	+66	+7.3	-1.1	-0.4	+1.1	+1.6	+18	+202	+174	+261	+184	
ACC%	69%	59%	82%	82%	83%	81%	82%	79%	74%	79%	47%	73%	72%	72%	73%	64%	77%	77%					

Lovely hindquarter and attractive muscle pattern. A balanced set of EBVs with no extremes. Suitable for heifers.

Purchaser..... Price.....

**Top 5%** **Top 10%** **Top 30%**

Ranking in Angus Aust. February 2024

## Proven Genetic Performance

# Autumn 2024



# Sale Bulls

**73 HAZELDEAN T1468 (AI) PV APR AMFU NHFU CAFU DDFU** Born: **19/07/2022**  
 Society Id: **NH22T1468**

HAZELDEAN JAIPUR J140 BURENDA MELTDOWN M435  
 HAZELDEAN MAGNUM M586 BURENDA PICADILLY P635  
 HAZELDEAN H356 BURENDA HARP L261  
**Sire: HAZELDEAN Q1580** **Dam: BURENDA R513**  
 RENNYLEA EDMUND E11 BURENDA JAUNTY J74  
 HAZELDEAN L32 BURENDA HERMA M660  
 HAZELDEAN J9 BURENDA HERMA H369

Front	Rear	Front	Rear	Front	Rear	MUSCLE	TEMP.	SHEATH
6	5	6	6	5	5	C+	1	4

Structural EBV's			
TACE	ANGLE	CLAW	LEGS
	<b>+0.9</b>	<b>+0.68</b>	<b>1.06</b>
ACC%	61%	61%	60%

TRANSTASMAN ANGUS CATTLE EVALUATION - FEBRUARY 2024																							
TACE	CALVING EASE				GROWTH & MATERNAL				FERTILITY		CWT	CARCASE					Doc	Angus Index	Dom	Heavy Grain	Heavy Grass		
	DIR	DTRS	GL	B Wt	200	400	600	MWt	Milk	SS	DC	C Wt	EMA	RIB	RUMP	RBY%	IMF%	Doc.					
<b>EBV</b>	<b>-0.7</b>	<b>+4.4</b>	<b>-4.7</b>	<b>+5.1</b>	<b>+54</b>	<b>+100</b>	<b>+132</b>	<b>+114</b>	<b>+27</b>	<b>+4.6</b>	<b>-5.7</b>	<b>+80</b>	<b>+10.6</b>	<b>-1</b>	<b>-2</b>	<b>+1.1</b>	<b>+2.1</b>	<b>+19</b>	<b>+220</b>	<b>+184</b>	<b>+282</b>	<b>+209</b>	
<b>ACC%</b>	64%	53%	83%	81%	82%	81%	81%	77%	72%	79%	41%	70%	69%	69%	70%	59%	74%	76%					

Solid type with strong topline and impressive shape. Plenty of growth top 3% for both milk and scrotal size EBVs. Top 12% for EMA

Purchaser..... Price.....

**74 HAZELDEAN T1651 (Nat) PV APR AMFU NHFU CAFU DDFU** Born: **03/08/2022**  
 Society Id: **NH22T1651**

TE MANIA BERKLEY B1 HAZELDEAN JAIPUR J140  
 HAZELDEAN F1023 HAZELDEAN M182  
 HAZELDEAN B723 HAZELDEAN K807  
**Sire: HAZELDEAN R890** **Dam: HAZELDEAN R31**  
 HAZELDEAN LAMBREQUIN L21 HAZELDEAN JACKTON J143  
 HAZELDEAN P1110 HAZELDEAN L131  
 HAZELDEAN J592 HAZELDEAN F15

Front	Rear	Front	Rear	Front	Rear	MUSCLE	TEMP.	SHEATH
7	7	6	7	5	5	C+	1	5

Structural EBV's			
TACE	ANGLE	CLAW	LEGS
	<b>+0.94</b>	<b>+0.82</b>	<b>0.98</b>
ACC%	64%	63%	59%

TRANSTASMAN ANGUS CATTLE EVALUATION - FEBRUARY 2024																							
TACE	CALVING EASE				GROWTH & MATERNAL				FERTILITY		CWT	CARCASE					Doc	Angus Index	Dom	Heavy Grain	Heavy Grass		
	DIR	DTRS	GL	B Wt	200	400	600	MWt	Milk	SS	DC	C Wt	EMA	RIB	RUMP	RBY%	IMF%	Doc.					
<b>EBV</b>	<b>-5.3</b>	<b>+5.6</b>	<b>-5.2</b>	<b>+5.1</b>	<b>+58</b>	<b>+98</b>	<b>+130</b>	<b>+126</b>	<b>+8</b>	<b>+3.8</b>	<b>-3</b>	<b>+80</b>	<b>-2.1</b>	<b>+0.4</b>	<b>-2.8</b>	<b>-0.4</b>	<b>+1.9</b>	<b>+19</b>	<b>+137</b>	<b>+112</b>	<b>+184</b>	<b>+120</b>	
<b>ACC%</b>	62%	50%	81%	80%	81%	79%	80%	76%	71%	77%	39%	69%	68%	68%	69%	58%	73%	74%					

Long barrel and even. Plenty of growth and in the top 30% for calving ease daughters.

Purchaser..... Price.....

**75 HAZELDEAN T1681 (Nat) PV APR AMFU NHFU CAFU DDFU** Born: **05/08/2022**  
 Society Id: **NH22T1681**

BALDRIDGE BEAST MODE B074 G A R PROPHET  
 HAZELDEAN P16 BALDRIDGE BEAST MODE B074  
 HAZELDEAN G90 BALDRIDGE ISABEL Y69  
**Sire: HAZELDEAN R685** **Dam: HAZELDEAN R251**  
 HAZELDEAN JAIPUR J140 RENNYLEA NORF42  
 HAZELDEAN M79 HAZELDEAN J497  
 HAZELDEAN J340 HAZELDEAN F576

Front	Rear	Front	Rear	Front	Rear	MUSCLE	TEMP.	SHEATH
7	6	6	6	5	5	C+	1	4

Structural EBV's			
TACE	ANGLE	CLAW	LEGS
	<b>+0.82</b>	<b>+0.56</b>	<b>0.84</b>
ACC%	64%	64%	59%

TRANSTASMAN ANGUS CATTLE EVALUATION - FEBRUARY 2024																							
TACE	CALVING EASE				GROWTH & MATERNAL				FERTILITY		CWT	CARCASE					Doc	Angus Index	Dom	Heavy Grain	Heavy Grass		
	DIR	DTRS	GL	B Wt	200	400	600	MWt	Milk	SS	DC	C Wt	EMA	RIB	RUMP	RBY%	IMF%	Doc.					
<b>EBV</b>	<b>+4.5</b>	<b>+4.3</b>	<b>-5.9</b>	<b>+1.9</b>	<b>+57</b>	<b>+99</b>	<b>+131</b>	<b>+131</b>	<b>+15</b>	<b>+3</b>	<b>-2.7</b>	<b>+68</b>	<b>+4.2</b>	<b>-2.7</b>	<b>-4.6</b>	<b>+0.7</b>	<b>+1.7</b>	<b>+35</b>	<b>+172</b>	<b>+142</b>	<b>+228</b>	<b>+153</b>	
<b>ACC%</b>	63%	52%	81%	81%	82%	80%	80%	77%	71%	77%	39%	67%	67%	67%	68%	58%	72%	74%					

Very attractive birth to growth spread - a real curve bender! Top 6% of the breed for docility and claw set EBVs. Suitable for heifers.

Purchaser..... Price.....

**Top 5%** **Top 10%** **Top 30%**

Ranking in Angus Aust. February 2024

**Proven Genetic Performance**

www.hazeldean.com.au



# Autumn 2024



# Sale Bulls

**76 HAZELDEAN T1882 (Nat) PV APR AMFU NHFU CAFU DDFU** Born: 18/08/2022 Society Id: NHZ22T1882

HAZELDEAN JAIPUR J140 LD CAPITALIST 316  
 HAZELDEAN M182 HAZELDEAN P328  
 HAZELDEAN K807 HAZELDEAN K1103  
**Sire: HAZELDEAN R889** **Dam: HAZELDEAN R1358**  
 EF COMPLEMENT 8088 HAZELDEAN JILLIBY J360  
 HAZELDEAN P961 HAZELDEAN L980  
 HAZELDEAN J1218 HAZELDEAN H848

Front	Rear	Front	Rear	Front	Rear	MUSCLE	TEMP.	SHEATH
6	6	6	6	5	5	B-	1	4

Structural EBV's			
TACE	ANGLE	CLAW	LEGS
	+1.04	+0.64	1.16
ACC%	61%	61%	59%

TRANSTASMAN ANGUS CATTLE EVALUATION - FEBRUARY 2024																						
TACE	CALVING EASE				GROWTH & MATERNAL					FERTILITY		CWT	CARCASE					Doc	Angus Index	Dom	Heavy Grain	Heavy Grass
	DIR	DTRS	GL	B Wt	200	400	600	MWt	Milk	SS	DC	C Wt	EMA	RIB	RUMP	RBY%	IMF%	Doc.				
EBV	+3.3	+3	-4.4	+4.8	+67	+114	+154	+138	+21	+3.7	-5.3	+90	+10.8	-1.6	-1.6	+2.2	-2.2	+16	+236	+207	+288	+224
ACC%	61%	51%	81%	80%	82%	80%	80%	77%	71%	77%	38%	68%	67%	67%	69%	57%	73%	74%				

Plenty of frame and carcass with real softness. Moderate birth to top 3% of breed for 600d growth. Top 1% for retail beef yield, top 1% for net feed intake efficiency. Suitable for heifers.

Purchaser..... Price.....

**77 HAZELDEAN T2039 (Nat) PV APR AMFU NHFU CAFU DDFU** Born: 24/08/2022 Society Id: NHZ22T2039

RENNYLEA C511 BOWMONT JACKPOT SRKJ310  
 RENNYLEA NORH708 HAZELDEAN M46  
 RENNYLEA E176 HAZELDEAN K452  
**Sire: HAZELDEAN R40** **Dam: HAZELDEAN R815**  
 HAZELDEAN KLAN K434 HAZELDEAN M1087  
 HAZELDEAN M1001 HAZELDEAN P1088  
 HAZELDEAN J611 HAZELDEAN L611

Front	Rear	Front	Rear	Front	Rear	MUSCLE	TEMP.	SHEATH
6	5	6	6	5	5	C+	1	4

Structural EBV's			
TACE	ANGLE	CLAW	LEGS
	+0.94	+0.7	1.12
ACC%	63%	63%	60%

TRANSTASMAN ANGUS CATTLE EVALUATION - FEBRUARY 2024																						
TACE	CALVING EASE				GROWTH & MATERNAL					FERTILITY		CWT	CARCASE					Doc	Angus Index	Dom	Heavy Grain	Heavy Grass
	DIR	DTRS	GL	B Wt	200	400	600	MWt	Milk	SS	DC	C Wt	EMA	RIB	RUMP	RBY%	IMF%	Doc.				
EBV	+1.7	+2.8	-6.6	+4.6	+62	+116	+146	+138	+18	+3.9	-6.6	+103	+1.5	-3.7	-5.7	+0.9	+1.8	+14	+220	+200	+272	+206
ACC%	63%	52%	82%	80%	82%	80%	80%	77%	71%	78%	40%	68%	68%	68%	69%	59%	73%	74%				

Good frame and fantastic birth to 400d growth EBV top 4% of the breed. Top 1% for carcass weight and he looks like it in the flesh! Suitable for heifers.

Purchaser..... Price.....

**78 HAZELDEAN T2182 (Nat) PV APR AMFU NHFU CAFU DDFU** Born: 28/08/2022 Society Id: NHZ22T2182

G A R PROPHET HAZELDEAN LANCASHIRE L612  
 BALDRIDGE BEAST MODE B074 HAZELDEAN P850  
 BALDRIDGE ISABEL Y69 HAZELDEAN F431  
**Sire: HAZELDEAN R149** **Dam: HAZELDEAN R476**  
 RENNYLEA EDMUND E11 MATAURI REALITY 839  
 HAZELDEAN L420 HAZELDEAN N272  
 HAZELDEAN J649 HAZELDEAN K452

Front	Rear	Front	Rear	Front	Rear	MUSCLE	TEMP.	SHEATH
7	6	7	6	5	6	C+	1	4

Structural EBV's			
TACE	ANGLE	CLAW	LEGS
	+0.94	+0.58	1.14
ACC%	63%	63%	61%

TRANSTASMAN ANGUS CATTLE EVALUATION - FEBRUARY 2024																						
TACE	CALVING EASE				GROWTH & MATERNAL					FERTILITY		CWT	CARCASE					Doc	Angus Index	Dom	Heavy Grain	Heavy Grass
	DIR	DTRS	GL	B Wt	200	400	600	MWt	Milk	SS	DC	C Wt	EMA	RIB	RUMP	RBY%	IMF%	Doc.				
EBV	+1.2	+8.2	-6.7	+3.9	+46	+75	+97	+76	+9	+2.9	-5.3	+51	+6.3	-1.2	-3.1	+1.4	+2.9	+36	+209	+176	+265	+194
ACC%	62%	52%	80%	80%	81%	79%	80%	76%	70%	77%	39%	67%	66%	66%	67%	58%	71%	73%				

Square body with real thickness. Plenty of calving ease and docility to match. Suitable for heifers.

Purchaser..... Price.....

**Top 5%** **Top 10%** **Top 30%**  
 Ranking in Angus Aust. February 2024

## Proven Genetic Performance

# Autumn 2024



# Sale Bulls

**79 HAZELDEAN T2294 (Nat) PV APR AMFU NHFU CAFU DDFU** Born: 02/09/2022 Society Id: NHZ22T2294

BOWMONT JACKPOT SRKJ310  
HAZELDEAN M46  
HAZELDEAN K452  
Sire: HAZELDEAN R154  
HAZELDEAN KATZEN K416  
HAZELDEAN N229  
HAZELDEAN K1683

HAZELDEAN JAIPUR J140  
HAZELDEAN MAGNUM M586  
HAZELDEAN H356  
Dam: HAZELDEAN R1484  
TE MANIA BERKLEY B1  
HAZELDEAN G202  
HAZELDEAN B71

Front	Rear	Front	Rear	Front	Rear	MUSCLE	TEMP.	SHEATH
6	6	6	5	5	5	C+	1	4

Structural EBV's			
TACE	ANGLE	CLAW	LEGS
	+1.06	+0.96	1
ACC%	63%	63%	59%

TRANSTASMAN ANGUS CATTLE EVALUATION - FEBRUARY 2024																							
TACE	CALVING EASE				GROWTH & MATERNAL				FERTILITY		CWT	CARCASE					Doc	Angus Index	Dom	Heavy Grain	Heavy Grass		
	DIR	DTRS	GL	B Wt	200	400	600	MWt	Milk	SS	DC	C Wt	EMA	RIB	RUMP	RBV%	IMF%	Doc.					
EBV	+9.6	+2	-7.9	+1.5	+52	+91	+126	+119	+20	+2.3	-9.2	+83	+2.9	-1	-3.6	+0.2	+3.3	+38	+223	+184	+279	+211	
ACC%	61%	50%	80%	80%	81%	79%	79%	76%	71%	77%	39%	68%	67%	67%	68%	57%	72%	74%					

Impressive young bull lots of punch and power. Ample calving ease and mature cow is lower than 600d growth. Top 1% for days to calving, top 5% for docility and top 25% for IMF. Suitable for heifers.

Purchaser..... Price.....

**80 HAZELDEAN T2540 (Nat) PV APR AMFU NHFU CAFU DDFU** Born: 27/09/2022 Society Id: NHZ22T2540

G A R PROPHET  
BALDRIDGE BEAST MODE B074  
BALDRIDGE ISABEL Y69  
Sire: HAZELDEAN R896  
HAZELDEAN JAIPUR J140  
HAZELDEAN P73  
HAZELDEAN F21

HAZELDEAN F1023  
HAZELDEAN P666  
HAZELDEAN M677  
Dam: HAZELDEAN R1021  
HAZELDEAN JAIPUR J140  
HAZELDEAN P575  
HAZELDEAN L532

Front	Rear	Front	Rear	Front	Rear	MUSCLE	TEMP.	SHEATH
6	5	5	5	5	5	C+	2	4

Structural EBV's			
TACE	ANGLE	CLAW	LEGS
	+0.72	+0.58	1.06
ACC%	61%	61%	57%

TRANSTASMAN ANGUS CATTLE EVALUATION - FEBRUARY 2024																							
TACE	CALVING EASE				GROWTH & MATERNAL				FERTILITY		CWT	CARCASE					Doc	Angus Index	Dom	Heavy Grain	Heavy Grass		
	DIR	DTRS	GL	B Wt	200	400	600	MWt	Milk	SS	DC	C Wt	EMA	RIB	RUMP	RBV%	IMF%	Doc.					
EBV	-8.8	+4.1	+1.5	+6	+55	+100	+134	+96	+26	+2.7	-3.6	+86	+5.4	-3.6	-3.9	+0.5	+4.1	+28	+195	+151	+266	+180	
ACC%	63%	53%	81%	81%	82%	80%	80%	77%	71%	77%	40%	68%	68%	68%	69%	59%	73%	74%					

Great shape - very good footed bull. Fantastic milk with industry leading IMF too.

Purchaser..... Price.....

**81 HAZELDEAN T132 (AI) PV APR AMFU NHFU CAFU DDFU** Born: 11/07/2022 Society Id: NHZ22T132

RENNYLEA EDMUND E11  
RENNYLEA KODAK K522  
RENNYLEA EISA ERICA F810  
Sire: MURRAY KODAK N70  
GARDENS WAVE  
MURRAY WAVE J53  
TE MANIA QUEANBEYAN D113

HAZELDEAN JAIPUR J140  
HAZELDEAN P12  
HAZELDEAN K67  
Dam: HAZELDEAN R602  
MILLWILLAH COMPLEMENT NJWK108  
HAZELDEAN N841  
HAZELDEAN L410

Front	Rear	Front	Rear	Front	Rear	MUSCLE	TEMP.	SHEATH
6	6	6	6	5	5	C+	1	3

Structural EBV's			
TACE	ANGLE	CLAW	LEGS
	+1.04	+0.86	1.1
ACC%	67%	67%	65%

TRANSTASMAN ANGUS CATTLE EVALUATION - FEBRUARY 2024																							
TACE	CALVING EASE				GROWTH & MATERNAL				FERTILITY		CWT	CARCASE					Doc	Angus Index	Dom	Heavy Grain	Heavy Grass		
	DIR	DTRS	GL	B Wt	200	400	600	MWt	Milk	SS	DC	C Wt	EMA	RIB	RUMP	RBV%	IMF%	Doc.					
EBV	+9.1	+6.7	-9	+1.6	+37	+73	+93	+73	+23	+2.6	-7.1	+60	+8.3	+0.9	+1.2	+0.5	+5	+19	+234	+191	+307	+222	
ACC%	64%	53%	82%	81%	82%	81%	81%	78%	72%	79%	43%	72%	71%	71%	72%	62%	75%	76%					

Ample calving ease and lots of carcass. Top 30% for EMA, top 5% for IMF top 8% for days to calving. Suitable for heifers.

Purchaser..... Price.....

**Top 5%      Top 10%      Top 30%**

Ranking in Angus Aust. February 2024

## Proven Genetic Performance

# Autumn 2024



# Sale Bulls

**82 HAZELDEAN T194 (AI) PV APR AMFU NHFU CAFU DDFU** Born: 19/07/2022 Society Id: NHZ22T194

A A R TEN X 7008 S A  
V A R DISCOVERY 2240  
DEER VALLEY RITA 0308  
Sire: LANDFALL NEW GROUND TFAN90  
MATAURI REALITY 839  
LANDFALL ELSA L88  
LANDFALL ELSA J139

HAZELDEAN JAIPUR J140  
HAZELDEAN P437  
HAZELDEAN M129  
Dam: HAZELDEAN R955  
HAZELDEAN JAIPUR J140  
HAZELDEAN P427  
HAZELDEAN H324

Front	Rear	Front	Rear	Front	Rear	MUSCLE	TEMP.	SHEATH
5	5	6	6	5	6	C+	1	3

Structural EBV's			
TACE	ANGLE	CLAW	LEGS
	+0.66	+0.22	0.96
ACC%	68%	68%	67%

TRANSTASMAN ANGUS CATTLE EVALUATION - FEBRUARY 2024																						
TACE	CALVING EASE				GROWTH & MATERNAL					FERTILITY		CWT	CARCASE					Doc	Angus Index	Dom	Heavy Grain	Heavy Grass
	DIR	DTRS	GL	B Wt	200	400	600	MWt	Milk	SS	DC	C Wt	EMA	RIB	RUMP	RBV%	IMF%	Doc.				
EBV	+3.9	+5.9	-3.5	+4.8	+50	+101	+129	+122	+18	+5	-4	+63	+5.8	+0.4	-0.2	+1.3	+0.6	+37	+192	+172	+238	+182
ACC%	69%	60%	83%	82%	83%	81%	82%	79%	75%	79%	46%	71%	71%	71%	72%	65%	75%	77%				

Long And stretchy type with lots scope. Top 5% for docility and scrotal size EBVs. Suitable for heifers.

Purchaser..... Price.....

**83 HAZELDEAN T1599 (Nat) PV APR AMFU NHFU CA50% DDFU** Born: 30/07/2022 Society Id: NHZ22T1599

HAZELDEAN JAIPUR J140  
HAZELDEAN P388  
HAZELDEAN K672  
Sire: HAZELDEAN R728  
HAZELDEAN KATZEN K416  
HAZELDEAN N921  
HAZELDEAN K126

HAZELDEAN M701  
HAZELDEAN P925  
HAZELDEAN J978  
Dam: HAZELDEAN R461  
HAZELDEAN HAYWIRE H382  
HAZELDEAN K400  
HAZELDEAN H464

Front	Rear	Front	Rear	Front	Rear	MUSCLE	TEMP.	SHEATH
6	6	6	6	5	5	C+	2	4

Structural EBV's			
TACE	ANGLE	CLAW	LEGS
	+0.94	+0.98	1.02
ACC%	57%	57%	54%

TRANSTASMAN ANGUS CATTLE EVALUATION - FEBRUARY 2024																						
TACE	CALVING EASE				GROWTH & MATERNAL					FERTILITY		CWT	CARCASE					Doc	Angus Index	Dom	Heavy Grain	Heavy Grass
	DIR	DTRS	GL	B Wt	200	400	600	MWt	Milk	SS	DC	C Wt	EMA	RIB	RUMP	RBV%	IMF%	Doc.				
EBV	+6.7	+5.1	-5.5	+2.5	+49	+90	+115	+101	+16	+2.5	-9.2	+77	+3.2	+4	+3.2	-0.9	+4.9	+28	+252	+209	+330	+241
ACC%	62%	50%	81%	81%	82%	80%	80%	77%	71%	78%	37%	68%	67%	67%	68%	58%	73%	74%				

Long and straight topline, plenty of calving ease and top 1% for days to calving and top 5% for IMF, top 2% & 7% for rib and rump. Awesome indexes. Suitable for heifers.

Purchaser..... Price.....

**84 HAZELDEAN T2212 (Nat) PV APR AMFU NHFU CAFU DDFU** Born: 29/08/2022 Society Id: NHZ22T2212

RENNYLEA C511  
RENNYLEA NORH708  
RENNYLEA E176  
Sire: HAZELDEAN R40  
HAZELDEAN KLAN K434  
HAZELDEAN M1001  
HAZELDEAN J611

HAZELDEAN F1023  
HAZELDEAN P709  
HAZELDEAN M1192  
Dam: HAZELDEAN R963  
HAZELDEAN M1087  
HAZELDEAN P1146  
HAZELDEAN L805

Front	Rear	Front	Rear	Front	Rear	MUSCLE	TEMP.	SHEATH
6	6	6	6	5	5	C+	1	4

Structural EBV's			
TACE	ANGLE	CLAW	LEGS
	+1.1	+0.72	1.18
ACC%	61%	61%	60%

TRANSTASMAN ANGUS CATTLE EVALUATION - FEBRUARY 2024																						
TACE	CALVING EASE				GROWTH & MATERNAL					FERTILITY		CWT	CARCASE					Doc	Angus Index	Dom	Heavy Grain	Heavy Grass
	DIR	DTRS	GL	B Wt	200	400	600	MWt	Milk	SS	DC	C Wt	EMA	RIB	RUMP	RBV%	IMF%	Doc.				
EBV	+2.8	+4.1	+1	+2.6	+44	+85	+103	+61	+26	+3	-4.5	+74	+5.4	+0.1	+0.6	+0.1	+4.5	+43	+222	+182	+303	+207
ACC%	63%	52%	80%	80%	82%	80%	80%	77%	71%	77%	40%	69%	68%	68%	69%	59%	73%	74%				

A balanced set of traits with calving ease, fertility, carcass and lots of added IMF. Suitable for heifers.

Purchaser..... Price.....

Top 5%      Top 10%      Top 30%

Ranking in Angus Aust. February 2024

Proven Genetic Performance

www.hazeldean.com.au



# Autumn 2024



# Sale Bulls

**85 HAZELDEAN T2275 (Nat) SV APR AM3% NH3% CA3% DD3%** Born: 02/09/2022  
Society Id: NHZ22T2275

G A R PROPHET  
BALDRIDGE BEAST MODE B074  
BALDRIDGE ISABEL Y69  
Sire: HAZELDEAN R919  
MILLWILLAH COMPLEMENT NJWK108  
HAZELDEAN P130  
HAZELDEAN G530

HZ AI BU BASIN GULLY  
Dam: HAZELDEAN R633  
HAZELDEAN F1023  
HAZELDEAN N393  
HAZELDEAN K477

Front	Rear	Front	Rear	Front	Rear	MUSCLE	TEMP.	SHEATH
7	6	6	6	5	5	C+	2	5

Structural EBV's			
TACE	ANGLE	CLAW	LEGS
	+0.76	+0.64	0.92
ACC%	63%	63%	60%

TRANSTASMAN ANGUS CATTLE EVALUATION - FEBRUARY 2024																						
TACE	CALVING EASE				GROWTH & MATERNAL				FERTILITY		CWT	CARCASE					Doc	Angus Index	Dom	Heavy Grain	Heavy Grass	
	DIR	DTRS	GL	B Wt	200	400	600	MWt	Milk	SS	DC	C Wt	EMA	RIB	RUMP	RBY%	IMF%	Doc.				
EBV	+8.7	+6.1	-1.3	+0.9	+44	+80	+96	+89	+14	+2.7	-6.7	+63	+9	-1.7	-1.7	+1.6	+2.6	+19	+229	+201	+289	+212
ACC%	61%	51%	80%	80%	81%	79%	79%	75%	70%	76%	37%	67%	66%	66%	67%	57%	71%	73%				

Long and long stretchy moderate framed with bull with lots of calving ease.

Purchaser..... Price.....

**86 HAZELDEAN T2277 (Nat) PV APR AMFU NHFU CAFU DDFU** Born: 02/09/2022  
Society Id: NHZ22T2277

G A R PROPHET  
BALDRIDGE BEAST MODE B074  
BALDRIDGE ISABEL Y69  
Sire: HAZELDEAN R873  
HAZELDEAN JAIPUR J140  
HAZELDEAN P647  
HAZELDEAN M719

ARDROSSAN JUSTICE NAQJ93  
HAZELDEAN P57  
HAZELDEAN D170  
Dam: HAZELDEAN R471  
TE MANIA YORKSHIRE Y437  
HAZELDEAN G316  
HAZELDEAN A650

Front	Rear	Front	Rear	Front	Rear	MUSCLE	TEMP.	SHEATH
6	6	6	6	5	6	C+	2	4

Structural EBV's			
TACE	ANGLE	CLAW	LEGS
	+0.92	+0.52	1.02
ACC%	65%	65%	63%

TRANSTASMAN ANGUS CATTLE EVALUATION - FEBRUARY 2024																						
TACE	CALVING EASE				GROWTH & MATERNAL				FERTILITY		CWT	CARCASE					Doc	Angus Index	Dom	Heavy Grain	Heavy Grass	
	DIR	DTRS	GL	B Wt	200	400	600	MWt	Milk	SS	DC	C Wt	EMA	RIB	RUMP	RBY%	IMF%	Doc.				
EBV	+2.6	+6.6	-2.3	+4.3	+53	+88	+108	+102	+8	+2.8	-5.3	+55	+5.8	-1.7	-3	+1.2	+1.9	+29	+209	+184	+265	+191
ACC%	62%	51%	80%	80%	81%	79%	79%	76%	70%	76%	38%	66%	65%	66%	67%	57%	71%	73%				

Slick coated with good balance. Top 4% for claw set EBV. Moderate mature cow weight for those looking to moderate. Note: small old eye scar

Purchaser..... Price.....

**87 HAZELDEAN T2454 (Nat) PV APR AMFU NHFU CA25% DD50%** Born: 14/09/2022  
Society Id: NHZ22T2454

KOUPALS B&B IDENTITY  
HAZELDEAN P720  
HAZELDEAN G319  
Sire: HAZELDEAN R468  
HAZELDEAN KEMAL K467  
HAZELDEAN M905  
HAZELDEAN H379

HAZELDEAN LAMBREQUIN L21  
HAZELDEAN P985  
HAZELDEAN J796  
Dam: HAZELDEAN R1246  
HAZELDEAN KINGSMAN K1098  
HAZELDEAN M312  
HAZELDEAN K415

Front	Rear	Front	Rear	Front	Rear	MUSCLE	TEMP.	SHEATH
7	6	7	6	4	5	C+	1	5

Structural EBV's			
TACE	ANGLE	CLAW	LEGS
	+1.04	+0.76	1
ACC%	57%	57%	54%

TRANSTASMAN ANGUS CATTLE EVALUATION - FEBRUARY 2024																						
TACE	CALVING EASE				GROWTH & MATERNAL				FERTILITY		CWT	CARCASE					Doc	Angus Index	Dom	Heavy Grain	Heavy Grass	
	DIR	DTRS	GL	B Wt	200	400	600	MWt	Milk	SS	DC	C Wt	EMA	RIB	RUMP	RBY%	IMF%	Doc.				
EBV	+4.9	+5.4	-7.9	+1.4	+42	+76	+98	+70	+28	+2.8	-7.8	+63	+7.4	+0.5	+1.3	-0.1	+3.1	+23	+220	+180	+287	+205
ACC%	60%	49%	80%	80%	81%	79%	80%	76%	70%	77%	36%	67%	66%	66%	67%	56%	71%	74%				

Square back end with a strong topline. Bucket loads of calving ease, with very impressive days to calving. Both of these traits are real profit drivers in a cow and calf operation. Suitable for heifers.

Purchaser..... Price.....

**Top 5%    Top 10%    Top 30%**

Ranking in Angus Aust. February 2024

## Proven Genetic Performance

# Autumn 2024



# Sale Bulls

**88 HAZELDEAN T2101 (Nat) PV APR AMFU NHFU CAFU DDFU** Born: **25/08/2022**  
 Society Id: **NHZ22T2101**

TE MANIA BERKLEY B1 HAZELDEAN KIBBITZ K553  
 HAZELDEAN F1023 HAZELDEAN P926  
 HAZELDEAN B723 HAZELDEAN G50  
**Sire: HAZELDEAN R890** **Dam: HAZELDEAN R514**  
 HAZELDEAN LAMBREQUIN L21 RENNYLEA EDMUND E11  
 HAZELDEAN P1110 HAZELDEAN N601  
 HAZELDEAN J592 HAZELDEAN H324

Front	Rear	Front	Rear	Front	Rear	MUSCLE	TEMP.	SHEATH
7	6	6	6	5	5	C+	2	4

Structural EBV's			
TACE	ANGLE	CLAW	LEGS
	<b>+0.82</b>	<b>+0.54</b>	<b>0.92</b>
ACC%	60%	59%	59%

TRANSTASMAN ANGUS CATTLE EVALUATION - FEBRUARY 2024																						
TACE	CALVING EASE				GROWTH & MATERNAL				FERTILITY		CWT	CARCASE					Doc	Angus Index	Dom	Heavy Grain	Heavy Grass	
	DIR	DTRS	GL	B Wt	200	400	600	MWt	Milk	SS	DC	C Wt	EMA	RIB	RUMP	RBV%	IMF%					Doc.
EBV	<b>+10.2</b>	<b>+7.8</b>	<b>-4.9</b>	<b>+0.5</b>	<b>+40</b>	<b>+72</b>	<b>+86</b>	<b>+73</b>	<b>+9</b>	<b>+2.3</b>	<b>-6</b>	<b>+64</b>	<b>+1.1</b>	<b>+1.3</b>	<b>-0.6</b>	<b>-0.2</b>	<b>+5.4</b>	<b>+14</b>	<b>+206</b>	<b>+172</b>	<b>+275</b>	<b>+189</b>
ACC%	63%	53%	81%	80%	81%	79%	80%	77%	71%	77%	40%	69%	68%	68%	70%	59%	73%	74%				

Athletic young bull, lots of fertility and calving ease. Suitable for heifers.

Purchaser..... Price.....

**89 HAZELDEAN T2431 (Nat) PV APR AMFU NHFU CA1% DDFU** Born: **12/09/2022**  
 Society Id: **NHZ22T2431**

HAZELDEAN JAIPUR J140 HAZELDEAN LAMBREQUIN L21  
 HAZELDEAN P12 HAZELDEAN P985  
 HAZELDEAN K67 HAZELDEAN J796  
**Sire: HAZELDEAN R624** **Dam: HAZELDEAN R1334**  
 HAZELDEAN KATZEN K416 JINDRA DOUBLE VISION 16748826  
 HAZELDEAN N723 HAZELDEAN M872  
 HAZELDEAN K664 HAZELDEAN H945

Front	Rear	Front	Rear	Front	Rear	MUSCLE	TEMP.	SHEATH
7	6	6	6	5	5	C+	1	3

Structural EBV's			
TACE	ANGLE	CLAW	LEGS
	<b>+1.28</b>	<b>+0.88</b>	<b>1.3</b>
ACC%	61%	60%	59%

TRANSTASMAN ANGUS CATTLE EVALUATION - FEBRUARY 2024																						
TACE	CALVING EASE				GROWTH & MATERNAL				FERTILITY		CWT	CARCASE					Doc	Angus Index	Dom	Heavy Grain	Heavy Grass	
	DIR	DTRS	GL	B Wt	200	400	600	MWt	Milk	SS	DC	C Wt	EMA	RIB	RUMP	RBV%	IMF%					Doc.
EBV	<b>+1.1</b>	<b>+5.4</b>	<b>-5.8</b>	<b>+2.9</b>	<b>+37</b>	<b>+76</b>	<b>+103</b>	<b>+72</b>	<b>+21</b>	<b>+3.5</b>	<b>-6.7</b>	<b>+63</b>	<b>+3.9</b>	<b>+4.1</b>	<b>+4.8</b>	<b>-0.6</b>	<b>+3.1</b>	<b>+40</b>	<b>+195</b>	<b>+155</b>	<b>+251</b>	<b>+185</b>
ACC%	60%	49%	80%	80%	81%	79%	79%	76%	69%	76%	36%	67%	66%	66%	67%	57%	71%	72%				

Moderate frame square and thick set, very slick. Top 2% for rib and rump fats, excellent fertility traits. Top 28% for gestation length and IMF. Suitable for heifers.

Purchaser..... Price.....

**Top 5%** **Top 10%** **Top 30%**

Ranking in Angus Aust. February 2024

**Proven Genetic Performance**

www.hazeldean.com.au

## Hazeldean Semen Terms & Conditions

---

### Hazeldean retains semen rights on all bulls unless otherwise agreed upon.

- 1 The buyer may use bulls only:
  - To naturally service stock owned by the buyer, or
  - To collect semen for use in stock owned by the buyerAnd will not dispose of, or advertise the disposal of semen or semen rights from any bull to any other party.
- 2 Hazeldean retains the right to collect and market semen from any bull sold either at the buyer's premises or by transporting the bulls to a registered artificial insemination facility on the basis:
  - That Hazeldean will consult with the buyer and ensure that such collection of semen by Hazeldean will take place at a time which will not unreasonably interfere with the use of the bull/s by the buyer
  - Hazeldean will pay all costs of such collection: and
  - Hazeldean will indemnify the buyer in respect of any injury or damage to such bull during the collection process or while the bull is in Hazeldean's possession.
- 3 The semen rights terms bind any successor in title to the buyer, and any person in possession of bulls purchased from Hazeldean.
- 4 The buyer will not dispose of or part with possession of any bull the subject of the semen rights terms unless the party to whom disposal is to be made or to whom possession is to be given first, signs a document accepting the semen terms accrue for the benefit of Hazeldean, and Hazeldean can enforce the semen rights terms.
- 5 The buyer acknowledges:
  - That the physical transfer of bulls from Hazeldean to the buyer is an act that accepts the semen rights terms;
  - That the bulls subject to the semen rights terms are adequately described in the documents of sale, which includes any sale or auction information;
  - That Hazeldean may register the interest created by the semen rights terms pursuant to the Personal Property Securities Act 2009 of the Commonwealth;
  - That Hazeldean may take possession of the bull dealt with in any way that contravenes the semen rights terms;
  - That the buyer, and any successor in title to the buyer and any person to whom the buyer passes possession of the bull will be liable jointly and individually for the reasonable expenses of Hazeldean under the semen rights terms, any reasonable expenses in enforcing those terms.









HAZELDEAN  
LITCHFIELD

*Notes*

A series of horizontal dotted lines for taking notes.



### Directions to Hazeldean from Cooma

If you are entering Cooma from the Canberra (Eastern) end turn left at the first roundabout in the centre of town by the park. If entering from the Jindabyne (Western) it will be a right turn at the second roundabout. Follow this street, Bombala St, (also the Snowy Mountains Highway to Bega and the South Coast) until you reach a bridge over the Cooma Creek on the outskirts of town. Turn right just before the bridge. The sign says Bobundara 34 and also Church Rd.

Follow this road exactly 14kms from the turn and the Hazeldean mailbox and entrance is on the right - about 1 km past the only bridge you cross on the Bobundara Rd.

### Airports

Hazeldean is located 1.5 hours' drive south of Canberra near Cooma. There are daily flights from all Capital cities to Canberra airport. Hazeldean is 20 minutes from the Snowy Mountains/Cooma Airport which is all weather and has lights. For privately chartered aircraft please contact 02 6452 5999 for more details.



### Where to stay

**Nebula Motel**  
42 Bombala Street  
02 4552 4133

**Altair Motel**  
192 Sharp Street  
02 6452 1211

**White Manor Motel**  
252 Sharp Street  
02 6452 1152

*When booking mention you are coming for the Hazeldean sale and they will give you a great deal.*



**HAZELDEAN**  
LITCHFIELD  
EST 1865

**Jim Litchfield**  
m: 0417 676 561

**Ed Bradley**  
m: 0412 298 546

**Bea Litchfield**  
m: 0427 933 103

Hazeldean Office 02 6453 5555  
admin@hazeldean.com.au

[www.hazeldean.com.au](http://www.hazeldean.com.au)